

Cabinet Console

1U Cabinet Console with 15" TFT Monitor

1U Cabinet Console with 17" TFT Monitor

1U Cabinet Console with 19" TFT Monitor

1UCABCONS

1UCABCONS17

1UCABCONS19

Instruction Manual



Actual product may vary from photo



StarTech.com

The Professionals' Source for Hard-to-Find Computer Parts

FCC Compliance Statement

This equipment has been tested and found to comply with the limits for a Class B digital device, pursuant to part 15 of the FCC Rules. These limits are designed to provide reasonable protection against harmful interference in a residential installation. This equipment generates, uses and can radiate radio frequency energy and, if not installed and used in accordance with the instructions, may cause harmful interference to radio communications. However, there is no guarantee that interference will not occur in a particular installation. If this equipment does cause harmful interference to radio or television reception, which can be determined by turning the equipment off and on, the user is encouraged to try to correct the interference by one or more of the following measures:

- Reorient or relocate the receiving antenna.
- Increase the separation between the equipment and receiver.
- Connect the equipment into an outlet on a circuit different from that to which the receiver is connected.
- Consult the dealer or an experienced radio/TV technician for help.

Use of Trademarks, Registered Trademarks, and other Protected Names and Symbols

This manual may make reference to trademarks, registered trademarks, and other protected names and/or symbols of third-party companies not related in any way to StarTech.com. Where they occur these references are for illustrative purposes only and do not represent an endorsement of a product or service by StarTech.com, or an endorsement of the product(s) to which this manual applies by the third-party company in question. Regardless of any direct acknowledgement elsewhere in the body of this document, StarTech.com hereby acknowledges that all trademarks, registered trademarks, service marks, and other protected names and/or symbols contained in this manual and related documents are the property of their respective holders.

Table of Contents

Introduction1
Features1
Before You Begin2
System Requirements2
Assembly4
Installation7
Front Panel functions8
KVM Control and Status8
LCD Panel Control8
LCD Panel Power Switch8
Replaceable Keyboard9
Replaceable Touch Pad9
Specifications11
Technical Support12
Warranty Information12

Introduction

Thank you for purchasing a StarTech.com 1U Cabinet Console. This console offers the ultimate in computer management, especially for applications where space is at a premium. The console uses a flat panel Active Matrix TFT display (please see **Features** for a detailed outline of the resolutions available). The drawer can be pulled out for operation from the rack on sliding rails that latch in the extended position and when not in use, the display can be folded down, locked, and secured while pushed in. With different rear bracket & extension kits, the console can be mounted on rack cabinets of various depths. The console comes with standard PS/2 keyboard and mouse connectors as well as an HDB15 VGA connector for computer or KVM switch connection.

Features.

- **1UCABCONS:** Flip-open 15" TFT LCD panel supports 1024 x 768 @60/70/75
- **1UCABCONS17:** Flip-open 17" TFT LCD panel supports 1280 x 1024 @60/70/75
- **1UCABCONS19:** Flip-open 19" TFT LCD panel supports 1280 x 1024 @60/70/75
- Standard 19" 1U rack drawer
- Modular design
- Full 105 key, low-profile, sturdy keyboard built-in
- Standard connectors for PC connection
- Locking mechanism locks the drawer when pulled out, pushed in or folded down
- Supports replaceable keyboard, mouse and module selection
- Ergonomic hand rest design
- For rack cabinet with depth from 20" (50cm) and up (with appropriate Rear bracket & extension kit)
- Quick and easy installation
- Optional KVM switch available

Before You Begin

To ensure a quick and easy installation, please read through this section carefully before attempting to install the console.

The following are required to install the console:

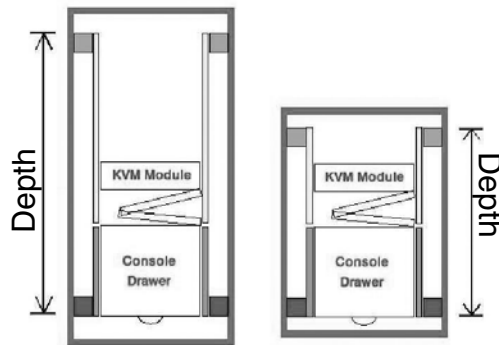
1U Cabinet Console: assembled "LCD panel + keyboard + mouse pad" drawer

Rear bracket & extension kit: This kit contains two pieces of rear brackets and two extensions. Make sure you have the correct kit to fit the depth of your cabinet.

Note: the following length is measured between "front pole and rear pole inside a rack cabinet" not the outside depth of a rack:

Front Pole to Rear Pole Distance

Front pole to rear pole distance (Depth)	1UCABCONS		CABCONS30KIT		1UCABCONS17		CABCONS42KIT		1UCABCONS19	
	cm	inch	cm	inch	cm	inch	cm	inch	cm	inch
Minimum	49.5	19 1/2	57.5	22 5/8	67.5	26 5/8	77.5	30 1/2	87.5	34 1/2
Maximum	57	22 3/8	70.5	27 3/4	80.5	31 5/8	90.5	35 5/8	100.5	39 3/4



Top view of rack cabinet with console installed

Instruction Manual

The KVM Module can be connected to a console, or be used as a stand-alone KVM Switch. There are three major categories: PS/2, USB and Sun Interfaces:

Type	PS/2 KVM		
Model name	CAB832DS	CAB1631D	CAB1631D1U
No. of Console Ports	2	1	1
No. of Computer Ports	8	16	16
OSD Menu	Yes	Yes	Yes
OSD Menu	1U	2U	1U
Cable Type	SVPS23N1_xx PS23N1THINxx		SVECONxx

Type	Hybrid KVM	
Model name	CAB831HD	CAB1631HD
Interface	PS/2, USB	
No. of Console Ports	1	1
No. of Computer Ports	8	16
OSD Menu	Yes	
Height	1U	2U
Cable Type	PS2 – SVECONx USB - SVECONUSx	

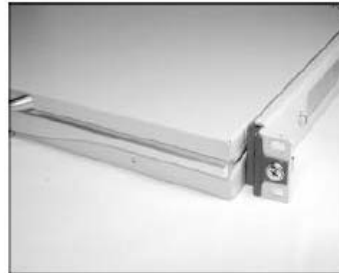
Type	IP KVM
Model name	CAB1641HDI
Interface	PS/2, USB
No. of Console Ports	1
No. of Computer Ports	16
OSD Menu	Yes
Height	1U
Cable Type	PS2 – SVECONx USB - SVECONUSx

Assembly

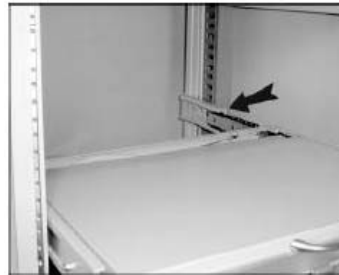
1. Choose a proper position for the rack drawer. Mount the rear brackets (from the Rear bracket & extension kit) and lightly fasten them onto the rear vertical poles. Both will be removed later.



2. Remove the stopper from the assembled drawer. The safety stopper is designed to stop the drawer from sliding out during transportation. **Warning:** After the safety stopper is carefully removed, the drawer may slide out when tilted and could cause serious injury.



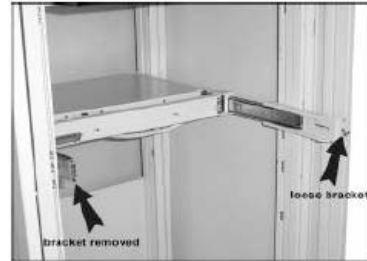
3. Slide the assembled drawer into the rack cabinet from the front and insert the two slide rails of the assembled drawer into the pockets of the rear brackets.



4. Fasten the assembled drawer onto the front brackets using the four screws provided.



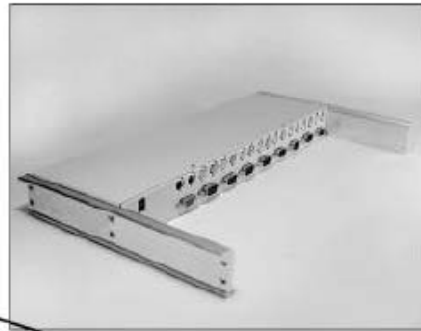
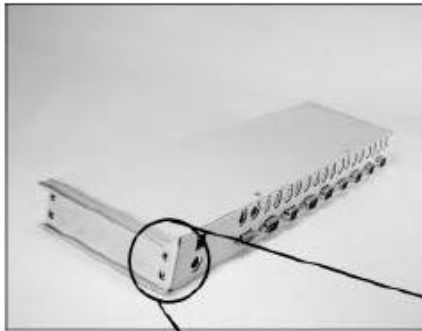
5. Remove both of the rear brackets. The front brackets now hold the assembled drawer.



6. Attach the extensions (from the Rear bracket & extension kit) to both sides of the KVM module box. Please note the length of the extensions and mount them in one of the following ways. Also, please note that for a 2U model, the extensions are mounted to the lower half of the module.

Short extension attachment

Long extension attachment

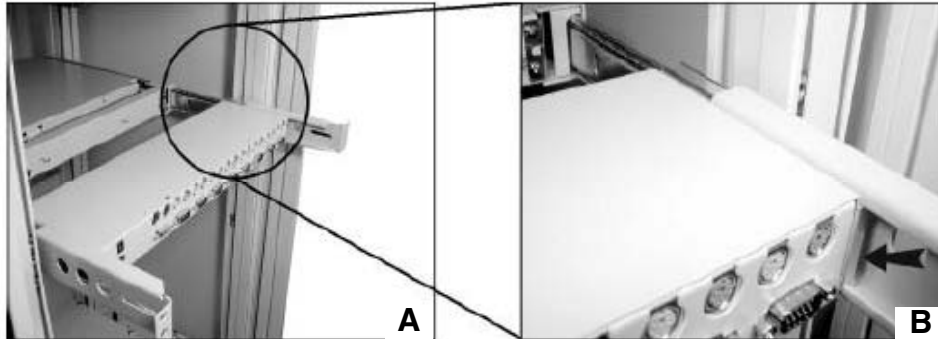


Wider side of the extension on top

7. The rear brackets, extensions and slide rails have a tight fit. Make sure you

follow these steps for easy installation.

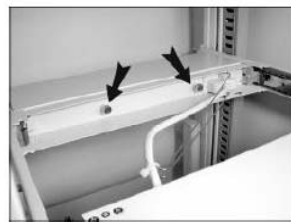
- A.** Slide the rear brackets onto the extensions.
- B.** Insert both sliding rails of the assembled drawer into the tight space formed by the rear brackets and the extensions. The KVM module should be pushed in evenly on both right and left sides.



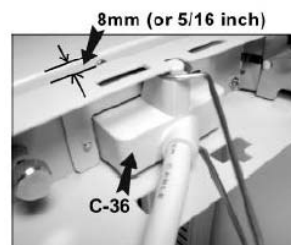
- 8. Push the rear brackets all the way in and fasten them.



- 9. Slide the assembled drawer out. Push the KVM module box evenly toward the drawer, and then lock both units by the screws.



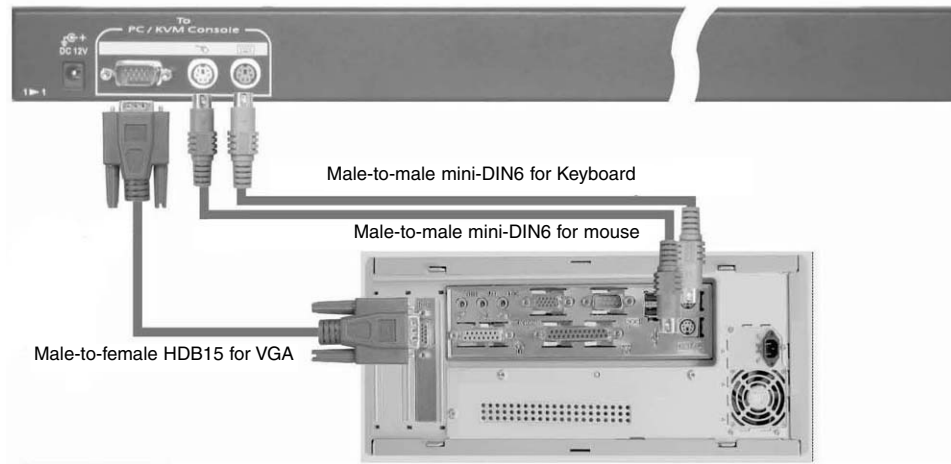
- 10. Make sure the C-36 connectors are firmly connected during step 10.



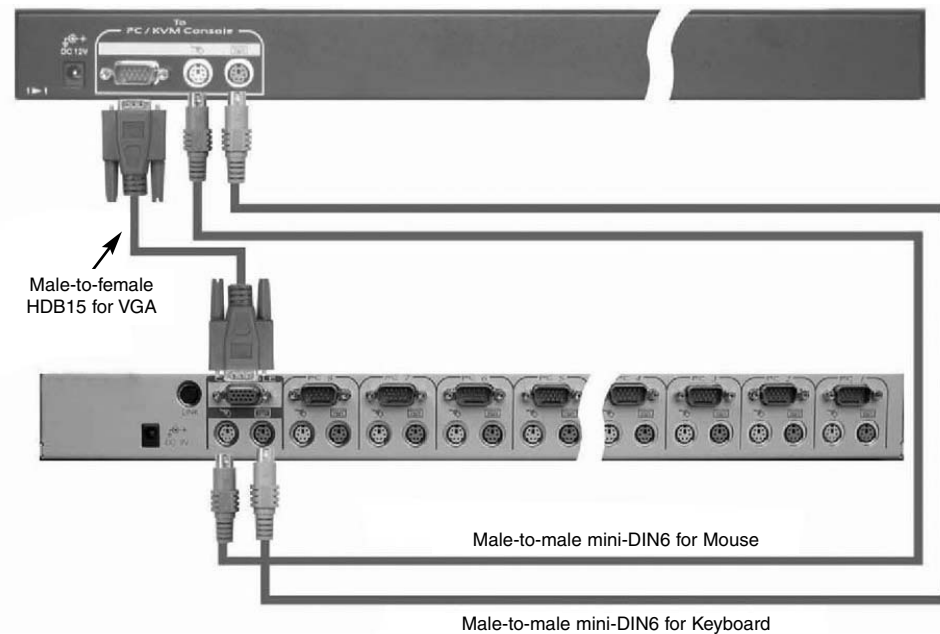
- 11. Connect the power supply to the power jack on the KVM module to complete the installation.

Installation

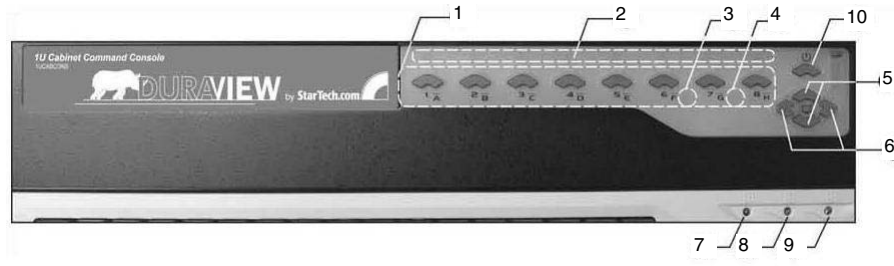
Consider the console as a set of keyboard, mouse and monitor, and connect it directly to a computer with the 1 to 1 KVM module:



Or, the console with the 1 to 1 KVM module can be connected to a KVM switch as shown below:



Front Panel Functions



KVM Control and Status:

(This section is effective only when a KVM switch module is connected.)

1. **Computer Selection Pad** - Press one of these pushbuttons to select a computer. For 16 port models, 1-8 represent the lower 8 ports, while A-H indicates the higher 8 ports. Port 1 and A share the same pushbutton; if port 1 is already selected, tap its pushbutton to select port A. If port 1 is not selected, press and hold pushbutton 1 for two seconds to select port A.
2. **Selected Computer Indicator** - One of the indicators turns red when a corresponding computer is selected by pushbuttons, hotkey or OSD menu.
3. **Local Console in Operation** - When a computer is accessed through the console, this will illuminate green.
4. **Remote Console in Operation** - This will illuminate green when a computer is accessed by another set of keyboard/mouse/monitor connected to the Remote console when the KVM Switch Function Module is a 2-console KVM.

LCD Panel Control:

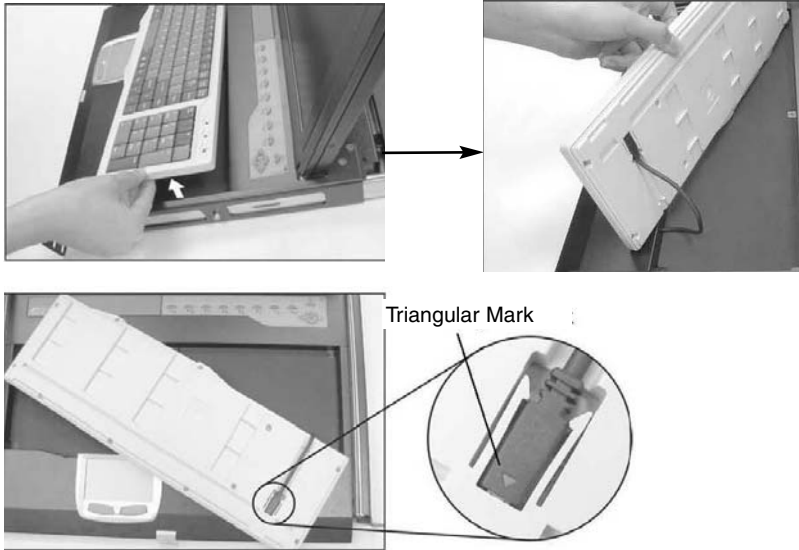
5. **LCD Panel Menu** - These buttons invoke the OSD menu for the LCD panel and acts as menu selection.
6. **LCD Panel Adjustment** - Lets you adjust settings for the LCD panel.

Keyboard Status and LCD Panel Power Switch:

7. **Num Lock** - Keyboard Num Lock status
8. **Caps Lock** - Keyboard Caps Lock status
9. **Scroll Lock** - Keyboard Scroll Lock status
10. **LCD Panel Power Switch**

Replaceable Keyboard

The keyboard is replaceable, in the event of language changes or maintenance. To replace the keyboard, tilt it up, locate the mini-USB cable underneath the keyboard and gently unplug it. While installing the replacement keyboard, please ensure that you extend just enough of the cable to keep the keyboard flat inside the tray.



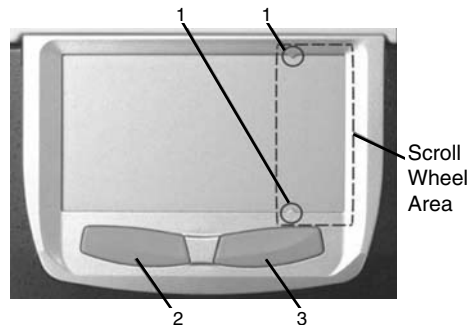
Please note: There is a round hole under the drawer, which can be used to pass one finger through allowing for easier removal of the keyboard (pushing upwards).

Please note: The triangular mark on the mini USB connector must face outwards.

Replaceable Touch Pad

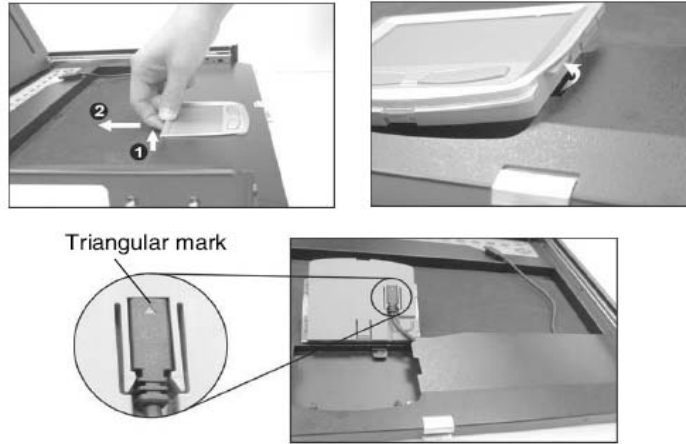
The built-on Touchpad offers “wheel mouse” functionality. The area of the Touch Pad to the right side of the two small triangular marks is the simulated “wheel” as shown below:

- 1 - Triangular Marker
- 2 - Left Mouse Button
- 3 - Right Mouse Button



Instruction Manual

To remove the Touch Pad, press the tab underneath it upward to release the latch, and then slide it outwards until the Touch Pad can be lifted up clear from the notches, as shown in the figure on the right. The Touch Pad is attached by a piece of mini-USB cable. To install the Touch Pad, extend just enough mini-USB cable and slide the Touch Pad all the way in till you hear a click sound as it is locked in position.



Please Note: The triangular mark on the mini-USB connector must face outwards.

Specifications

Specifications	15" LCD Panel	17" LCD Panel	19" LCD Panel
Active Display Area	304.1 x 228.1 (mm)	337.920 x 270.336 (mm)	376.32x301.056 (mm)
Pixel Pitch (mm)	0.297(H) x 0.297(V)	0.264 (H) x 0.264 (V)	0.294(H) x 0.294(V)
Resolution	1024 x 768 @60/70/75Hz	1280 x 1024 @60/70/75Hz	
Color Pixel Arrangement	RGB vertical strip		
Display Mode	Normally White		
Brightness(cd/m ²)	250 (center)	260 (center)	250 (center)
Contrast Ratio	350:1	450:1	500:1
Display Color	16.2M colors (RGB 6-bits data)		16.7M colors (RGB 8-bits data)
User Control	OSD Control (auto saving)		
Input Signal	RGB analog, H/V separate		
Plug-n-Play VESA	VESA DDC 1/2B		
Power Consumption	33W	37W	40W
Viewing Angle	-70~70(H) -60~60(V) (Typ.)	-80~80(H) -80~80(V) (Typ.)	-85~85(H) -85~85(V) (Typ.)
Backlight Unit	2 CCFLs edge-light (top/bottom)	4 CCFLs edge-light (top/bottom)	
Operating Temperature Storage Temperature	0 to +50 (°C) -20 to +60 (°C)		
Operating Humidity	Relative Humidity 8% ~ 95%		
Non-Operating Humidity	95% RH		
Power Supply Input Voltage	Full range, 100V AC to 240V AC		
Regulatory Certifications	CE, FCC for the product. UL, TUV, CE for power supply		
Mouse Touch Pad	PS/2		
Power Management	VESA DPMS compliant ON mode = 23.2W STANDBY mode <= 1W SUSPEND mode <= 1W OFF mode <= 1W		

Technical Support

StarTech.com's lifetime technical support is an integral part of our commitment to provide industry-leading solutions. If you ever need help with your product, visit www.startech.com/support and access our comprehensive selection of online tools, documentation, and downloads.

Warranty Information

This product is backed by a one-year warranty. In addition, StarTech.com warrants its products against defects in materials and workmanship for the periods noted, following the initial date of purchase. During this period, the products may be returned for repair, or replacement with equivalent products at our discretion. The warranty covers parts and labor costs only. StarTech.com does not warrant its products from defects or damages arising from misuse, abuse, alteration, or normal wear and tear.

Limitation of Liability

In no event shall the liability of StarTech.com Ltd. and StarTech.com USA LLP (or their officers, directors, employees or agents) for any damages (whether direct or indirect, special, punitive, incidental, consequential, or otherwise), loss of profits, loss of business, or any pecuniary loss, arising out of or related to the use of the product exceed the actual price paid for the product.

Some states do not allow the exclusion or limitation of incidental or consequential damages. If such laws apply, the limitations or exclusions contained in this statement may not apply to you.

About StarTech.com

StarTech.com is “The Professionals’ Source for Hard-to-Find Computer Parts”. Since 1985, we have been providing IT professionals with the quality products they need to complete their solutions. We offer an unmatched selection of computer parts, cables, server management solutions and A/V products and serve a worldwide market through our locations in the United States, Canada, the United Kingdom and Taiwan.

Visit **www.startech.com** for complete information about all our products and to access exclusive interactive tools such as the Parts Finder and the KVM Reference Guide. StarTech.com makes it easy to complete almost any IT solution. Find out for yourself why our products lead the industry in performance, support, and value.