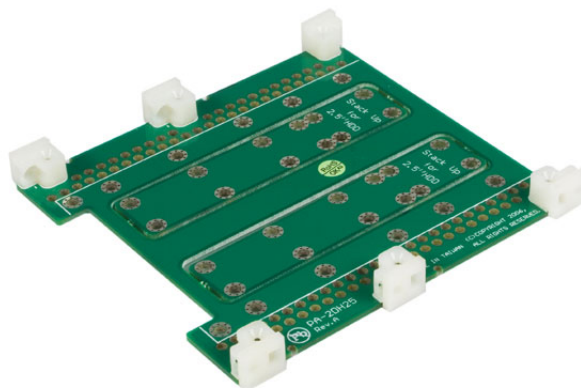


Dual 2.5in to Single 3.5in SATA Hard Drive Adapter

StarTech ID: SATA35252X



This SATA HDD Adapter allows one or two 2.5in SATA I/SATA II hard drives to be installed into a single 3.5in drive bay and connected to the host computer in place of a 3.5in SATA hard drive.

Simply mount the 2.5in SATA hard drives to the adapter board, then install the adapter in the computer as though it were a single drive.

To power the installed drives, the hard drive adapter includes an LP4 to dual SATA power 'Y' cable that lets you connect both drives to one of the computer power supply LP4 power connections. Then, it's as easy as connecting each of the drives to the motherboard SATA data connectors.

Applications and Solutions

- Allows use of multiple 2.5" SATA hard drives in single 3.5" bay

Features

- Dual SATA 2.5" hard drives can be mounted into a 3.5" drive bay

Technical Specifications

- Color: Green
- Product Height: 0.43 in [11 mm]
- Product Length: 4.25 in [108 mm]
- Carton Quantity: 100
- Shipping (Package) Weight: 0.27 lb [0.12 kg]
- Product Weight: 2.47 oz [70 g]
- Product Width: 4.02 in [102 mm]
- Power Cable:
 - General Specifications: 1x LP4 male connector to 2x SATA female power connectors
 - Operation Temperature: 0°C to 60°C
 - Humidity: Max. 95 %, non condensing