

10/100 VDSL2 Ethernet Extender Kit over Single Pair Wire – 1km

StarTech ID: 110VDSLEXTEU

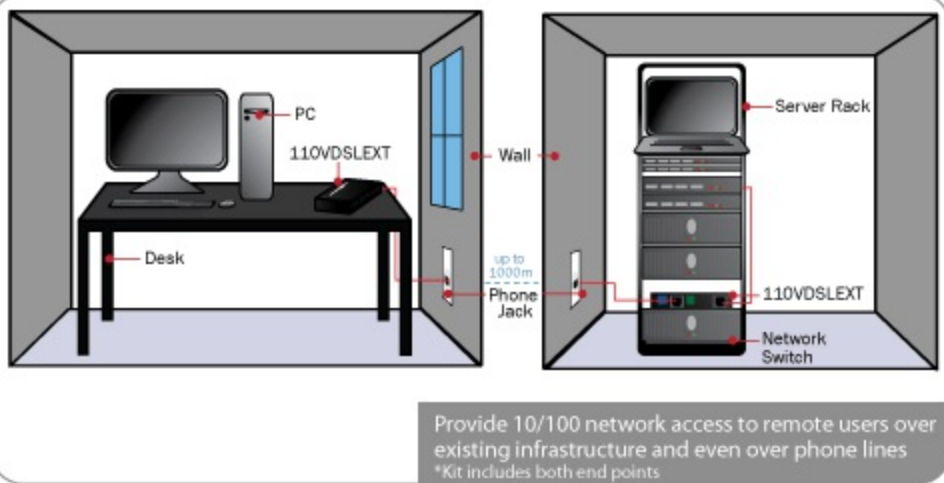
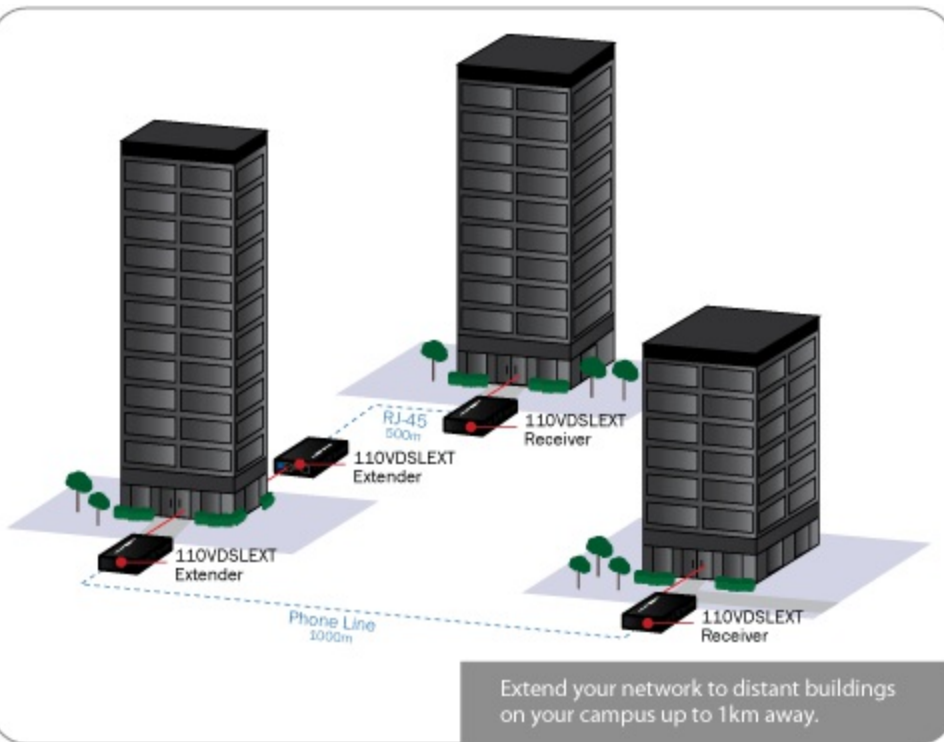


The 110VDSLEXTEU VDSL Ethernet extender kit allows you to span a 10/100 network over extremely long distances (up to 1km) while still maintaining high-speed network connectivity. The device allows you to run the connection over standard RJ45 cabling, existing RJ11 phone lines, or any other set of single pair wires. The VDSL (VDSL2) kit is simple to install and provides an out-of-the-box solution as both the Ethernet-VDSL extender and receiver units are included.

A perfect solution for a broad range of applications including connecting isolated user stations within the same building or between separate buildings, or overcoming infrastructure obstacles and distances (e.g. older stone/concrete architecture) where new wiring or wireless may be impossible. The VDSL Ethernet LAN Extender kit helps to eliminate expense by allowing video streaming and data to share the same telephone pair without interference.

The 110VDSLEXTEU requires only a single pair of wires to function, while offering the ability to use multiple sets of the devices to create several simultaneous connections to your remote building. In these multiple set configurations, you have the ability to use up to 4 sets over a single Cat5e or Cat6 cable which can be used as separate LAN (or VLAN) connections, or bridged into a trunk line for additional speed/bandwidth over long distances (up to two sets only over standard Cat5).

Solution Diagrams:



Backed by a StarTech.com 2-year warranty and free lifetime technical support.

Applications

- Provide ethernet over copper connectivity to a user or network segment that is in an isolated area of a large complex or in another building altogether
- Extend network connectivity to remote areas of stadiums, auditoriums or other venues
- Industrial applications include controlling CNC machinery, polling bar code scanner data, administering process control equipment, and other harsh environment applications
- Monitor and control medical equipment, security keypads/card scanners, point of sale equipment and remote sensor data, and various other healthcare related network communications
- Remote sensor monitoring for traffic flow management (air traffic control, expressway flow)

Features

- IEEE 802.1Q VLAN tag transparent
- Selectable CPE and CO mode via DIP switch
- Supports flow control for Fast Ethernet (pause frame or Back Pressure)
- Allows you the ability to select fixed SNR margin (9 dB) or fixed target data rate
- Light in weight and a very compact design
- Supports both symmetric and asymmetric transmission

Technical Specifications

Warranty	2 Years
Industry Standards	IEEE 802.3/802.3u/802.3x 10/100 Base-T Auto-Negotiation, Auto-MDI/MDI-X, ITU-T G993.1/993.2 On-board surge protection
Local Unit Connectors	2 - RJ-45 Female
Remote Unit Connectors	2 - RJ-45 Female
Maximum Data Transfer Rate	0m - 100Mbit/s 300m - 75Mbit/s 1km - 10Mbit/s
Max Distance	1000 m / 3300 ft
Note	You have the ability to use up to four sets over a single Cat5e or Cat6 cable which can be used as separate LAN (or VLAN) connections, or bridged into a trunk line for additional speed/bandwidth over long distances (Up to two sets only over standard Cat5).
Color	Black
Product Length	3.7 in [95 mm]
Product Width	2.8 in [72 mm]
Product Height	0.9 in [22 mm]
Product Weight	3.2 oz [90 g]
LED Indicators	3 - LAN: ACT/LNK, 10/100 Mbps, Half/Full Duplex
LED Indicators	3 - VDSL: Power On/Off, CO/CPE, Idle/Trained/Link
Power Adapter Included	Two
Input Voltage	230 AC
Output Voltage	12 DC
Output Current	1A

Center Tip Polarity	Positive
Plug Type	M
Operating Temperature	05/9/2012eg;C to 505/9/2012eg;C (325/9/2012eg;F to 1225/9/2012eg;F)
Storage Temperature	05/9/2012eg;C to 705/9/2012eg;C (325/9/2012eg;F to 1585/9/2012eg;F)
Humidity	10~90% RH
Shipping (Package) Weight	410
Included in Package	1 - Ethernet VDSL Extender
Included in Package	1 - Ethernet VDSL Receiver
Included in Package	2 - RJ-45 to VDSL Cable
Included in Package	2 - Power Adapter
Included in Package	1 - Instruction Manual

Certifications, Reports and Compatibility

