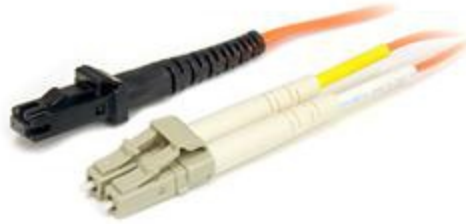


10m Multimode 50/125 Duplex Fiber Patch Cable LC - MT

StarTech ID: 50FIBLCMT10



This 10m 50/125 Multimode LC/MT-RJ Multimode Fiber Patch Cable provides the necessary connection between fiber networking devices for high-speed, long distance networks.

Ensuring optimal data transfers and network stability, 50/125-micron cables offer nearly three times the bandwidth of 62.5/125-micron cables, so your data will be transferred at higher rates over longer distances.

Each of our Fiber Patch Cables is individually tested and certified to be within acceptable optical insertion loss limits for guaranteed compatibility and 100% reliability.

Applications

- Used by long distance networks with mission critical data
- Telecommunication / Data communication
- Broadband systems
- Ideal solution for data applications requiring high speed data transmission

Features

- Attenuation loss meets or exceeds industry standards
- Immune to electricity interference
- Connectors offer greater durability in resisting pulls, strains, and impacts during cable installation and maintenance
- Fiber Optic Cables are backed by StarTech.com's lifetime warranty

Technical Specifications

Warranty	Lifetime
Fiber Size	50/125
Connector A	1 - Fiber Optic LC Male
Connector B	1 - Fiber Optic MT-RJ Male
Fiber Classification	OM2
Fiber Type	Multi Mode
Color	Orange
Cable Length	32.8 ft [10 m]
Product Length	32.8 ft [10 m]
Shipping (Package) Weight	0.2 lb [0.1 kg]

Certifications, Reports and Compatibility

