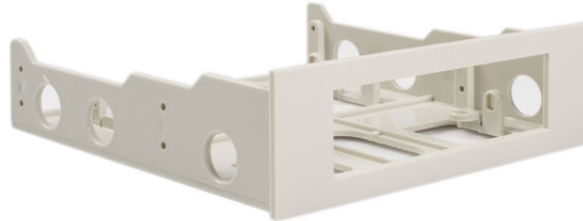


3.5in Hard Drive Mounting Bracket for 5.25in Front Drive Bay

StarTech ID: BRACKETFD



This plastic, floppy-drive adapter bracket lets you install a 3.5in floppy drive into a 5.25in bay.

A simple solution that lets you position a 3.5in floppy drive in a computer case as needed (without being confined to the 3.5in floppy bay determined by the case layout), the floppy drive adapter bracket features an attractive open-faced beige bezel that provides a snug, secured fit for installed drives.

Features

- Includes Plastic Beige Bezel

Technical Specifications

- Warranty: 1 Year warranty
- Color: Beige
- Carton Quantity: 40
- Shipping (Package) Weight: 0.53 lb [0.24 kg]
- Dimensions: 5.75" x 5.25" x 1.125"

