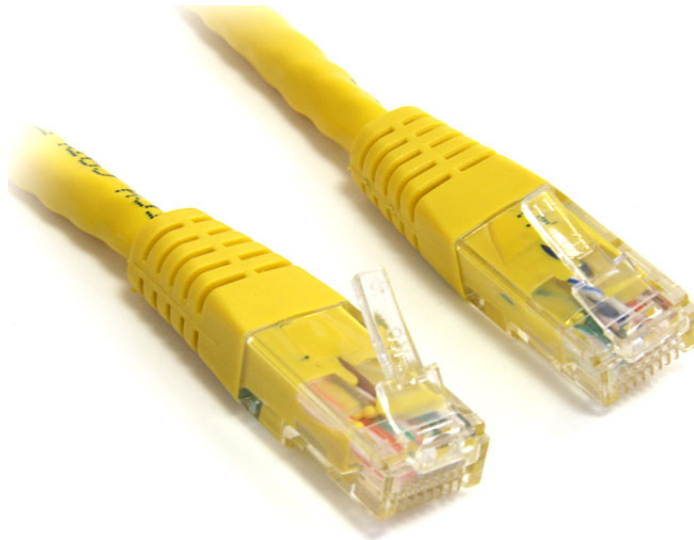


## 10 ft Yellow Molded Cat6 Crossover UTP Patch Cable

StarTech ID: C6CROSS10YL



StarTech.com's Cat 6 UTP Crossover Patch Cables offer reliable Ethernet connections. This 10ft cable is ETL verified to meet or exceed all Category 6 performance standards, and features a durable yellow jacket that simplifies departmental color coding while providing rugged flexibility for network connections.

Featuring top quality construction (100% copper conductors, 23 Gauge Wire and 50 Micron gold connectors), our Cat6 Crossover cables are built to last and backed by lifetime warranty.

### Applications and Solutions

- Category 6 cables support gigabit networks
- Connect two Ethernet hubs/switches together with crossover cable
- Use crossover cable to directly connect two computers without the need for a hub

## Features

- Colored Hoods for departmental color coding and easy identification
- Molded ends with top-quality connectors
- Molded strain relief and stranded wires for added flexibility and durability
- StarTech.com Category 6 crossover cables are manufactured to meet or exceed CAT6 specifications

## Technical Specifications

- Warranty: Lifetime warranty
- Connector A: 1 - RJ45 Male
- Connector B: 1 - RJ45 Male
- Color: Yellow
- Product Length: 10 ft [3.05 m]
- Maximum Cable Length: 328 ft [100 m]
- Network Cable Type: Crossover Molded
- Carton Quantity: 80
- Shipping (Package) Weight: 0.29 lb [0.13 kg]
- Connectors: RJ45 Male, RJ45 Male
- Length: 10 ft. (3.05m)
- Rating: 1000X Cat 6 (4 PR, 24AWG CSA TIA/EIA-568B)
- Color: Yellow

