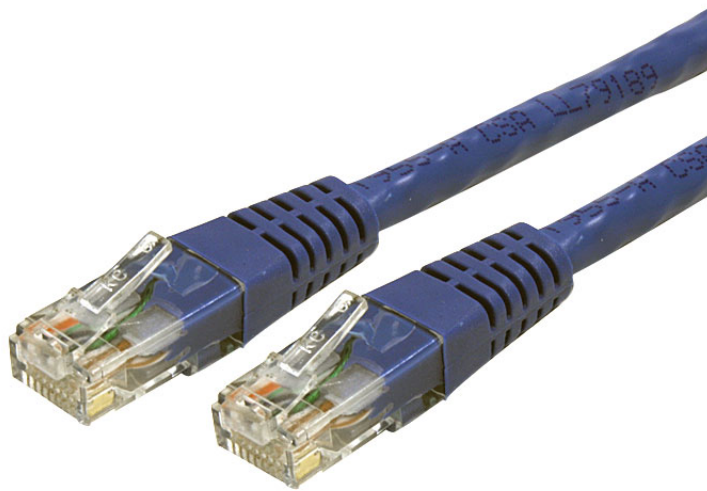


6 ft Blue Molded Cat6 UTP Patch Cable - ETL Verified

StarTech ID: C6PATCH6BL



Our Cat6 UTP patch cables are constructed with 24 gauge copper wire to support a broad range of Ethernet applications, such as Power over Ethernet (PoE).

Because we use a high quality UL Listed 24 gauge insulated copper wire, our cables easily sustain the nominal voltage (48v) capability required for Power over Ethernet applications, whereas the inferior quality offered by copper-coated aluminum cables may be subject to insufficient power delivery, heat buildup and potentially equipment damage.

All of our Cat6 patch cables are wired to ANSI/TIA-568-B specifications and backed by Lifetime Warranty.

Applications and Solutions

- Connects workstation to wall outlet
- May be used with gigabyte networks
- Patches from hub to distribution panel

Features

- Coloured Hoods for departmental colour coding
- StarTech Category 6 patch cables are carefully constructed and tested, to keep the Near End Crosstalk (NEXT) well within acceptable limits
- StarTech Category 6 Patch cables are constructed with top quality components
- The Strain relief prevents the cable from being bent at sharp angles at the connector to minimize the stress at the plug termination point

Technical Specifications

- Warranty: Lifetime warranty
- Connector A: 1 - RJ45 Male
- Connector B: 1 - RJ45 Male
- Color: Blue
- Product Length: 6 ft [1.83 m]
- Maximum Cable Length: 328 ft [100 m]
- Network Cable Type: Molded
- Carton Quantity: 150
- Shipping (Package) Weight: 0.18 lb [0.08 kg]
- Connectors: RJ45 Male, RJ45 Male
- Length:
- Rating: 1000X Cat 6 (4 PR 24AWG CSA TIA/EIA-568B)

