

EC1PECPS

PCI Express (x1) Base Parallel ExpressCard

Introduction

The EC1PECPS PCI Express (x1) Base Parallel ExpressCard allows you to connect parallel peripherals to any notebook computer that has an ExpressCard slot available.

A perfect solution for adding parallel scanners, printers and more, EC1PECPS installs in seconds to offer simple connectivity to a broad range of important peripheral devices.

Features

- Provides one IEEE 1284 SPP/EPP/ECP Parallel Port
- 32-byte FIFO data buffer
- Compatible with PCI Express lane bus (x1/x2/x4/x8/x16)
- Fits into 34mm ExpressCard slots
- WHQL Certified

Package Contents

- 1 x Parallel ExpressCard
- 1 x Driver CD
- 1 x Installation Guide
- 1 x Adapter Cable

Windows 2000 Installation

1. With the computer turned on, insert the EC1PECPS adapter into an available 34mm ExpressCard slot. Insert the Driver CD into the CD/DVD-ROM drive.
2. At the *Add New Hardware Wizard*, click on *Next*.
3. Select the option *Install from a list or specific location (Advanced)* and click on *Next*.
4. Select the option *Search for the best driver in these locations* and click on *Next*
5. Click *Next* and then *Finish*.
6. Remove the Driver CD, then select *Yes* to restart the computer for the setup to take effect.

Windows XP Installation

1. With the computer turned on, insert the EC1PECPS adapter into an available 34mm ExpressCard slot. Insert the Driver CD into the CD/DVD-ROM drive.
2. At the *Add New Hardware Wizard*, click on *Next*.
3. Select the option *Install from a list or specific location (Advanced)* and click on *Next*.
4. Select the option *Search for the best driver in these locations* and click on *Next*
5. Click *Next* and then *Finish* respectively..
6. Remove the Driver CD, then select *Yes* to restart the computer for the setup to take effect.

Windows Vista™ Driver installation

1. With the computer turned on, insert the EC1PECPS adapter into an available 34mm ExpressCard slot.
2. When the *Found New Hardware Wizard* appears, click on *Locate and install driver software (recommended)*.
3. When prompted, insert the Driver CD into the CD/DVD-ROM drive and click *Next*. Windows will automatically conclude the driver installation.

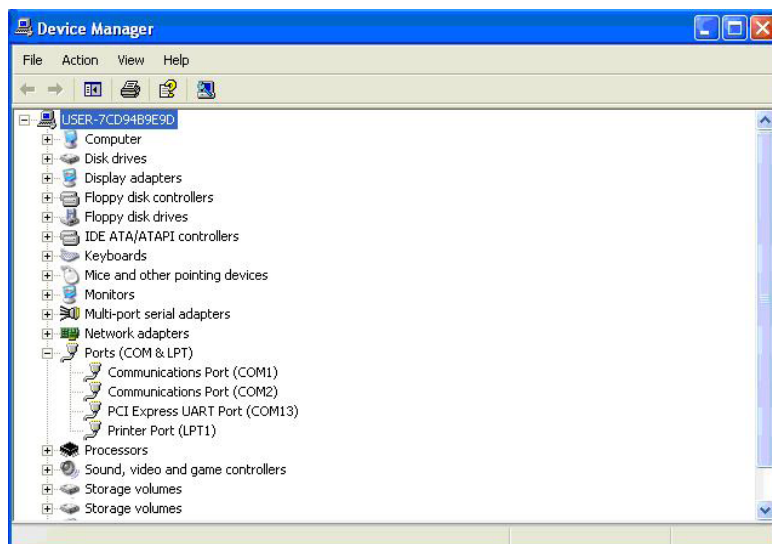


Specifications

Chipset	Oxford OXPcie840
Industry Standards	ECP/EPP/SPP
Maximum Data Transfer Rate	1.5 Mbps
OS Support	Windows 2000, XP, 2003, Vista™, DOS, Linux

Verifying Successful Installation

To verify that installation is complete, access the Device Manager, and double-click on the *Ports (COM & LPT)* listing. Here, you'll see the newly installed adapter listed (PCI Express UART Port):



Please see reverse for Technical Support and Warranty Information →

Technical Support

StarTech.com's lifetime technical support is an integral part of our commitment to provide industry-leading solutions. If you ever need help with your product, visit www.startech.com/support and access our comprehensive selection of online tools, documentation, and downloads.

Warranty Information

This product is backed by a lifetime warranty.

In addition, StarTech.com warrants its products against defects in materials and workmanship for the periods noted, following the initial date of purchase. During this period, the products may be returned for repair, or replacement with equivalent products at our discretion. The warranty covers parts and labor costs only. StarTech.com does not warrant its products from defects or damages arising from misuse, abuse, alteration, or normal wear and tear.

Limitation of Liability

In no event shall the liability of StarTech.com Ltd. and StarTech.com USA LLP (or their officers, directors, employees or agents) for any damages (whether direct or indirect, special, punitive, incidental, consequential, or otherwise), loss of profits, loss of business, or any pecuniary loss, arising out of or related to the use of the product exceed the actual price paid for the product. Some states do not allow the exclusion or limitation of incidental or consequential damages. If such laws apply, the limitations or exclusions contained in this statement may not apply to you.

FCC Compliance Statement

This equipment has been tested and found to comply with the limits for a Class B digital device, pursuant to part 15 of the FCC Rules. These limits are designed to provide reasonable protection against harmful interference in a residential installation. This equipment generates, uses and can radiate radio frequency energy and, if not installed and used in accordance with the instructions, may cause harmful interference to radio communications. However, there is no guarantee that interference will not occur in a particular installation. If this equipment does cause harmful interference to radio or television reception, which can be determined by turning the equipment off and on, the user is encouraged to try to correct the interference by one or more of the following measures:

- Reorient or relocate the receiving antenna.
- Increase the separation between the equipment and receiver.
- Connect the equipment into an outlet on a circuit different from that to which the receiver is connected.
- Consult the dealer or an experienced radio/TV technician for help.

Use of Trademarks, Registered Trademarks, and other Protected Names and Symbols

This manual may make reference to trademarks, registered trademarks, and other protected names and/or symbols of third-party companies not related in any way to StarTech.com. Where they occur these references are for illustrative purposes only and do not represent an endorsement of a product or service by StarTech.com, or an endorsement of the product(s) to which this manual applies by the third-party company in question. Regardless of any direct acknowledgement elsewhere in the body of this document, StarTech.com hereby acknowledges that all trademarks, registered trademarks, service marks, and other protected names and/or symbols contained in this manual and related documents are the property of their respective holders.