

USB 2.0 Hub ExpressCard

4 Port USB 2.0 Hub ExpressCard

EC400USB

Instruction Manual



Actual product may vary from photo

StarTech.com 
Making hard-to-find easy!

FCC Compliance Statement

This equipment has been tested and found to comply with the limits for a Class B digital device, pursuant to part 15 of the FCC Rules. These limits are designed to provide reasonable protection against harmful interference in a residential installation. This equipment generates, uses and can radiate radio frequency energy and, if not installed and used in accordance with the instructions, may cause harmful interference to radio communications. However, there is no guarantee that interference will not occur in a particular installation. If this equipment does cause harmful interference to radio or television reception, which can be determined by turning the equipment off and on, the user is encouraged to try to correct the interference by one or more of the following measures:

- Reorient or relocate the receiving antenna.
- Increase the separation between the equipment and receiver.
- Connect the equipment into an outlet on a circuit different from that to which the receiver is connected.
- Consult the dealer or an experienced radio/TV technician for help.

Use of Trademarks, Registered Trademarks, and other Protected Names and Symbols

This manual may make reference to trademarks, registered trademarks, and other protected names and/or symbols of third-party companies not related in any way to StarTech.com. Where they occur these references are for illustrative purposes only and do not represent an endorsement of a product or service by StarTech.com, or an endorsement of the product(s) to which this manual applies by the third-party company in question. Regardless of any direct acknowledgement elsewhere in the body of this document, StarTech.com hereby acknowledges that all trademarks, registered trademarks, service marks, and other protected names and/or symbols contained in this manual and related documents are the property of their respective holders.

Table of Contents

Introduction	1
Features	1
System Requirements	1
Package Contents	1
Installation	2
Safely removing the ExpressCard	2
Accessory Products from StarTech.com	3
Specifications	4
Technical Support	4
Warranty Information	4

Introduction

Thank you for purchasing a StarTech.com 4 port USB 2.0 Hub ExpressCard. This product allows you to add four USB 2.0 compliant ports to a host computer, using an available ExpressCard slot, and is backward compatible with the USB 1.1 specification, for use with older USB peripherals.

Easily installed, this device offers combined USB data transfer rates of up to 480Mbps, ensuring a strong connection with MP3 players, digital cameras, external CD/DVD-ROM drives and much more.

Features

- Combined data transfer rate of up to 480 Mbps
- Backward compatible with USB version 1.1
- Easy plug-and-play installation
- ExpressCard (34mm) Standard compliant

Before you begin

System requirements:

- A computer with an available ExpressCard slot (Please see Accessory Products from StarTech.com if you wish to use this ExpressCard with a desktop computer).
- Windows 2000/XP/2003/Vista/Mac OS X and up

Package contents:

This package should contain:

- 1 x USB Hub ExpressCard
- 1 x Instruction Manual

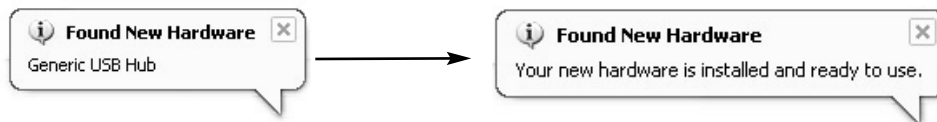
Installation



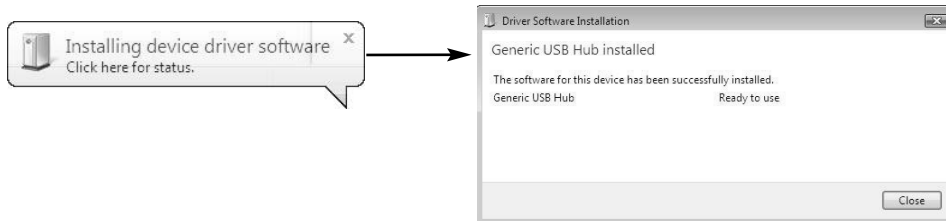
Caution: It is advisable to remove all possible static discharge potential from any objects that the ExpressCard may come in contact with before installation. This can be accomplished by touching a grounded metal object, prior to insertion.

1. Insert the ExpressCard into an available ExpressCard / 54 or 34mm slot. Since this card is hot-pluggable, this can be performed while the computer is on or off. Once the card has been inserted, ensure the computer is powered, to proceed with installation.
2. Windows will detect that the card has been inserted, and will automatically install the necessary software. Various message balloons will appear in the taskbar, indicating the status of the installation:

Windows XP



Windows Vista



Safely removing the ExpressCard

Please note that in Windows XP and 2000, when the ExpressCard is connected to the host computer, an icon (depicted below) will appear in the taskbar (normally the bottom right-hand corner of the screen, near the clock). To ensure safe removal of the ExpressCard, please click on this icon, select **Stop**, click **OK** and then **Close**, after which you can safely remove the ExpressCard from the host computer.



Accessory Products from StarTech.com

Contact your local StarTech.com dealer or visit www.startech.com for cables or other accessories that will help you get the best performance out of your new product.



USB2HAB6
6 ft High Speed Certified USB 2.0 Cable



USB2HAB10
10 ft High Speed Certified USB 2.0 Cable



USB2HAB15
15 ft High Speed Certified USB 2.0 Cable



USB2HAB6T
6 ft. Transparent USB 2.0 Cable A-B M/M



PEX2EC
PCI-Express to ExpressCard Adapter

Specifications

Certifications	FCC, CE, ROHS
Bus Type	ExpressCard
Connectors	Maximum Data Transfer Rate
Chipset	GL850A
OS Support	Windows 2000/XP/2003/Vista/ Mac OS X and up

Technical Support

StarTech.com's lifetime technical support is an integral part of our commitment to provide industry-leading solutions. If you ever need help with your product, visit www.startech.com/support and access our comprehensive selection of online tools, documentation, and downloads.

Warranty Information

This product is backed by a lifetime warranty. In addition, StarTech.com warrants its products against defects in materials and workmanship for the periods noted, following the initial date of purchase. During this period, the products may be returned for repair, or replacement with equivalent products at our discretion. The warranty covers parts and labor costs only. StarTech.com does not warrant its products from defects or damages arising from misuse, abuse, alteration, or normal wear and tear.

Limitation of Liability

In no event shall the liability of StarTech.com Ltd. and StarTech.com USA LLP (or their officers, directors, employees or agents) for any damages (whether direct or indirect, special, punitive, incidental, consequential, or otherwise), loss of profits, loss of business, or any pecuniary loss, arising out of or related to the use of the product exceed the actual price paid for the product. Some states do not allow the exclusion or limitation of incidental or consequential damages. If such laws apply, the limitations or exclusions contained in this statement may not apply to you.

About StarTech.com

StarTech.com is “The Professionals’ Source for Hard-to-Find Computer Parts”. Since 1985, we have been providing IT professionals with the quality products they need to complete their solutions. We offer an unmatched selection of computer parts, cables, server management solutions and A/V products and serve a worldwide market through our locations in the United States, Canada, the United Kingdom and Taiwan.

Visit **www.startech.com** for complete information about all our products and to access exclusive interactive tools such as the Parts Finder and the KVM Reference Guide. StarTech.com makes it easy to complete almost any IT solution. Find out for yourself why our products lead the industry in performance, support, and value.