

USB to RS232 Adapter 2 Port USB Hub

2 Port USB to RS232 Adapter / 2 Port USB Hub

ICUSB232HUB2

Instruction Manual



Actual product may vary from photo

StarTech.com 
Making hard-to-find easy!

FCC Compliance Statement

This equipment has been tested and found to comply with the limits for a Class B digital device, pursuant to part 15 of the FCC Rules. These limits are designed to provide reasonable protection against harmful interference in a residential installation. This equipment generates, uses and can radiate radio frequency energy and, if not installed and used in accordance with the instructions, may cause harmful interference to radio communications. However, there is no guarantee that interference will not occur in a particular installation. If this equipment does cause harmful interference to radio or television reception, which can be determined by turning the equipment off and on, the user is encouraged to try to correct the interference by one or more of the following measures:

- Reorient or relocate the receiving antenna.
- Increase the separation between the equipment and receiver.
- Connect the equipment into an outlet on a circuit different from that to which the receiver is connected.
- Consult the dealer or an experienced radio/TV technician for help.

Use of Trademarks, Registered Trademarks, and other Protected Names and Symbols

This manual may make reference to trademarks, registered trademarks, and other protected names and/or symbols of third-party companies not related in any way to StarTech.com. Where they occur these references are for illustrative purposes only and do not represent an endorsement of a product or service by StarTech.com, or an endorsement of the product(s) to which this manual applies by the third-party company in question. Regardless of any direct acknowledgement elsewhere in the body of this document, StarTech.com hereby acknowledges that all trademarks, registered trademarks, service marks, and other protected names and/or symbols contained in this manual and related documents are the property of their respective holders.

Table of Contents

Introduction	1
Features	1
System Requirements	1
Package Contents	1
Installation	2
Driver Installation	2
Windows 2000/XP/2003 Server	2
Windows Vista	5
Operating Notes	6
Specifications	7
Technical Support	7
Warranty Information	7

Introduction

Thank you for purchasing a StarTech.com 2 Port USB to RS232 Adapter / 2 Port USB Hub. The perfect addition to newer computers that offer little or no serial connectivity, this device allows you to add two USB and two RS232 serial ports to a host computer, using a single, existing USB port.

Features

- USB 1.1 and 2.0 Compliant
- Supports Low-Speed (LS), High-Speed(HS) and Full-Speed (FS) data traffic
- Supports the standard RS-232 Serial Interface

Before you begin

System requirements:

- Operating systems supported: Windows 98SE/ME/2000/XP/Windows Vista
- An available USB 2.0 Port

Package contents:

This package should contain:

- 1 x USB to RS232 Adapter / USB Hub
- 1 x Instruction manual
- 1 x Driver CD

Installation

With the power to the host computer turned on:

1. Situate the hub near the host computer.
2. Insert the USB type 'B' connector from the USB cable (included) into the corresponding port on the side panel of ICUSB232HUB2. Insert the remaining connector from the USB cable into an available USB port on the host computer.

Driver Installation

Windows 2000 / XP / 2003 Server

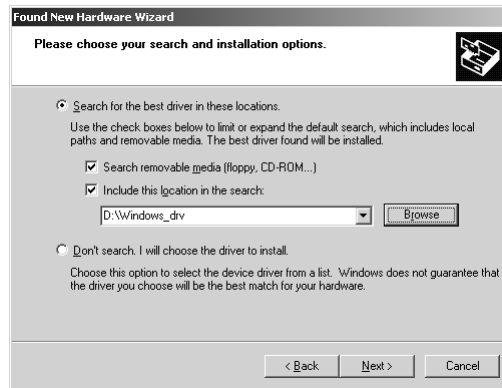
1. Once ICUSB232HUB2 has been connected to the host computer, Windows will indicate that it has found new hardware in a message balloon originating in the taskbar (normally the bottom right corner of the display, near the clock):



2. Windows will then begin the installation process by launching the **Found New Hardware Wizard**. When the **Welcome** screen appears, insert the accompanying Driver CD, select **Install from a list or specific location (advanced)** then click **Next**.



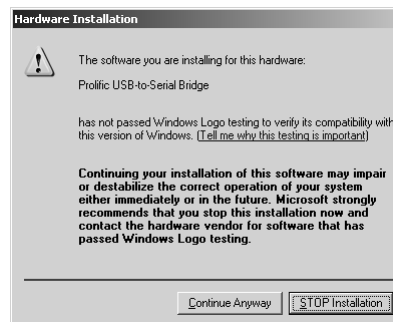
3. On the screen that follows, please select **Search for the best driver in these locations**, and ensure that there is a checkmark next to **Include this location in the search**. Here, you can click on the **Browse** button, and browse to the file to specify the correct location (**d:\Windows_drv**). Once the file has been selected, please click on **Next** to continue.



Wait for Windows to locate the file on the Driver CD:



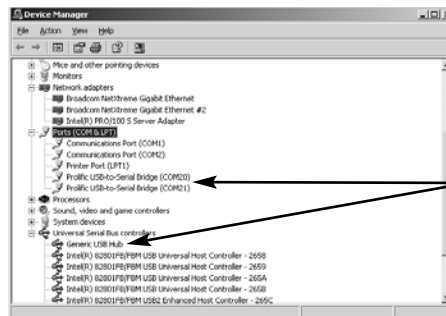
4. Once Windows locates the correct file, a Hardware Installation warning will appear. Click on **Continue Anyway**. Please note that the software that has been packaged with ICUSB232HUB2 has been thoroughly tested for compatibility and functionality:



- Windows will then complete the installation for the **Prolific USB-to-Serial Bridge**. Please click on **Finish**:



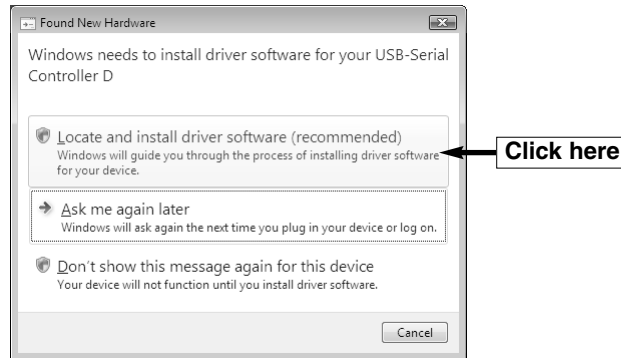
- You will then be prompted to perform steps 1-5 again. Please do so, and when prompted (as in step 5), please click on **Finish**.
- Once the software installation has completed, please browse to the **Device Manager**, to ensure that the added ports have been recognized. To perform this step, please click on **Start**, right-click on **My Computer** and select **Manage**. This will launch the Computer Management window; in the left pane, please click on **Device Manager**. In the right pane, click on **Ports (COM & LPT)** followed by **Universal Serial Bus Controllers**, where you should see:



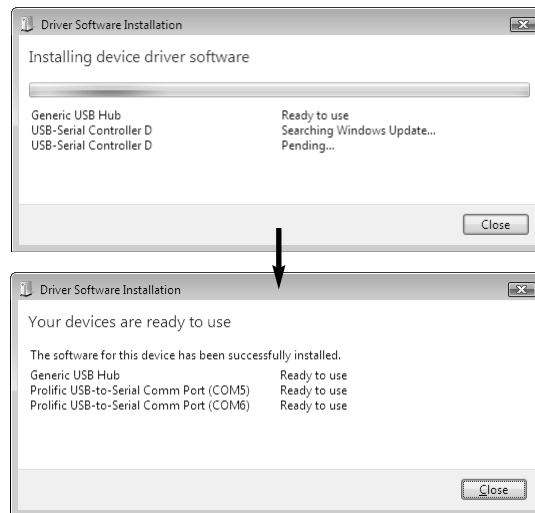
Prolific USB-to-Serial Comm Port (x2) and Generic USB Hub should be listed, upon successful installation

Windows Vista

1. Once ICUSB232HUB2 has been connected to the host computer, Windows will indicate that it has found new hardware and needs to install driver software. Please ensure that the host computer is connected to the Internet, and select **Locate and install driver software (recommended)**:

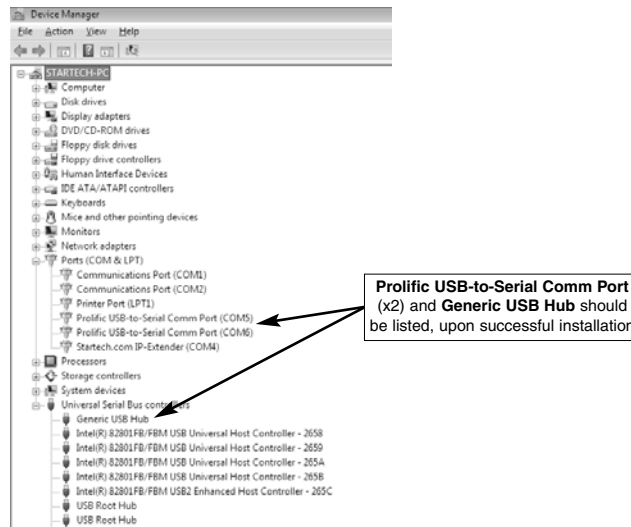


2. The operating system will automatically locate, download and install the necessary files:



3. Once the software has been downloaded and installed, you will be notified that **Your devices are ready to use**. Click **Close** to complete installation.
4. To verify that the necessary software has been installed and that ICUSB232HUB2 is properly detected by the host system:

Click on **Start**, right-click on the **Computer** icon and select **Manage**. In the left pane of the **Computer Management** window that appears, click on **Device Manager**, where you should see the following:



Operating Notes

- A** ICUSB232HUB2 provides bus-powered operation and does not require a power adapter connection. Although an optional step, you may wish to use a 5V DC 1.2A power adapter, to ensure that the peripherals connected to ICUSB232HUB2 receive enough power. If you find that connected devices are performing poorly, this could be the cause.
- B** Poor USB peripheral performance could be a result of the ports becoming overloaded. Please remove and re-connect the USB HUB to the computer to refresh the ports.

Specifications

Certifications	FCC, CE, ROHS
Connectors	2 X USB A MALE 1 X USB B FEMALE 2 X DB9 MALE 1 x 5V DC 1.2A
OS Support	Windows 98SE/ME/2000/XP/Windows Vista

Technical Support

StarTech.com's lifetime technical support is an integral part of our commitment to provide industry-leading solutions. If you ever need help with your product, visit www.startech.com/support and access our comprehensive selection of online tools, documentation, and downloads.

Warranty Information

This product is backed by a one-year warranty. In addition, StarTech.com warrants its products against defects in materials and workmanship for the periods noted, following the initial date of purchase. During this period, the products may be returned for repair, or replacement with equivalent products at our discretion. The warranty covers parts and labor costs only. StarTech.com does not warrant its products from defects or damages arising from misuse, abuse, alteration, or normal wear and tear.

Limitation of Liability

In no event shall the liability of StarTech.com Ltd. and StarTech.com USA LLP (or their officers, directors, employees or agents) for any damages (whether direct or indirect, special, punitive, incidental, consequential, or otherwise), loss of profits, loss of business, or any pecuniary loss, arising out of or related to the use of the product exceed the actual price paid for the product. Some states do not allow the exclusion or limitation of incidental or consequential damages. If such laws apply, the limitations or exclusions contained in this statement may not apply to you.

About StarTech.com

StarTech.com is “The Professionals’ Source for Hard-to-Find Computer Parts”. Since 1985, we have been providing IT professionals with the quality products they need to complete their solutions. We offer an unmatched selection of computer parts, cables, server management solutions and A/V products and serve a worldwide market through our locations in the United States, Canada, the United Kingdom and Taiwan.

Visit **www.startech.com** for complete information about all our products and to access exclusive interactive tools such as the Parts Finder and the KVM Reference Guide. StarTech.com makes it easy to complete almost any IT solution. Find out for yourself why our products lead the industry in performance, support, and value.