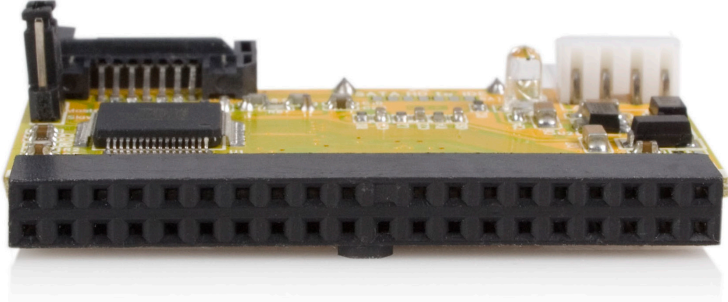


# PATA2SATA2

## IDE to SATA Drive Motherboard Adapter



### Introduction

Thank you for purchasing a StarTech.com PATA2SATA2 IDE to SATA Drive Motherboard Adapter.

Upgrade to SATA speed and performance without overhauling your entire system with the StarTech.com PATA2SATA2, an IDE to SATA upgrade kit. This dual channel bridge lets you connect two high-speed SATA drives without the cost and effort of upgrading your IDE (Parallel ATA) motherboard.

With improved airflow inside your case, and enhanced data integrity and security, you get all the benefits of a SATA system at a fraction of the cost. We've included a power connector and a SATA data transfer cable to make your upgrade to SATA even easier.

**Please Note:** If you do not have a Power Supply that Provides you with a SATA Power cable, then you will need to purchase SATAPOWADAP.

### Features

- Compatible With Ultra ATA 100/133 with Data transfer rate up to 1.5 Gbps (150 MBps)
- Compliant With Serial ATA 1.0 Specification
- Converts IDE to Serial ATA
- No Drivers required
- Supports ATAPI devices (CD/DVD drives, CD/DVD burners, etc...)
- Supports up to 2 channels and 2 devices
- With no jumpers, makes it easy for configuration

### Package Contents

- 1 X IDE to SATA Converter
- 1 X Power Cable
- 2 X SATA Cable

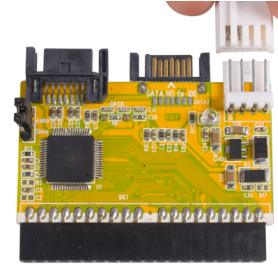
### Installation

The following steps outline the procedure to install the PATA2SATA2 IDE to SATA Drive Motherboard Adapter.

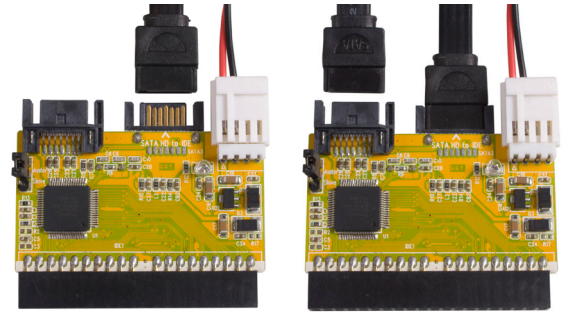
1. Power down the computer, and open the computer case to provide access to the motherboard.
2. Insert the PATA2SATA2 into an available 40-pin IDE slot on the motherboard.
3. Fasten the SATA Drive(s) to the computer case, as you would in a typical hard drive installation.
4. Connect the SATA Drive(s) to the computer power supply, using available SATA power connectors.
5. Connect the LP4 power connector on the LP4 to SP4 adapter to an available LP4 power connection on the computer power supply.



6. Connect the remaining end of the LP4 to SP4 adapter to the 4 pin power port on the PATA2SATA2.



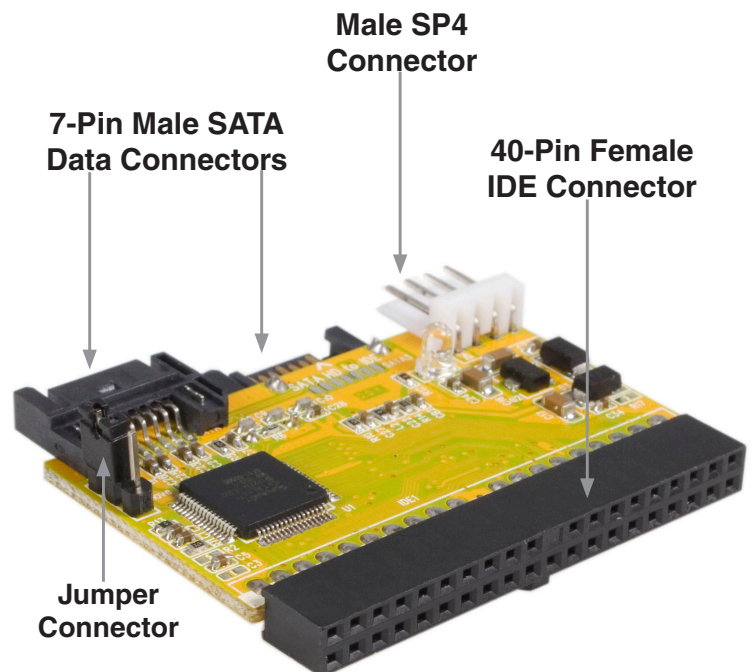
7. Connect the SATA Drive(s) to the PATA2SATA2 SATA connectors using the SATA data cable(s).



8. Replace the computer case cover(s) and power on the computer.

### Specifications

Specification	PATA2SATA2
Chipset	Sunplus SATALink SPIF223A
Data Transfer Rate	150 MBps
Industry Standards	Serial ATA 1.0
Connector Types	1 X IDE 40 pin Female
	2 X SATA Data 7 pin Male
	1 X SP4 Male



### **FCC Compliance Statement**

This equipment has been tested and found to comply with the limits for a Class B digital device, pursuant to part 15 of the FCC Rules. These limits are designed to provide reasonable protection against harmful interference in a residential installation. This equipment generates, uses and can radiate radio frequency energy and, if not installed and used in accordance with the instructions, may cause harmful interference to radio communications. However, there is no guarantee that interference will not occur in a particular installation. If this equipment does cause harmful interference to radio or television reception, which can be determined by turning the equipment off and on, the user is encouraged to try to correct the interference by one or more of the following measures:

- Reorient or relocate the receiving antenna.
- Increase the separation between the equipment and receiver.
- Connect the equipment into an outlet on a circuit different from that to which the receiver is connected.
- Consult the dealer or an experienced radio/TV technician for help.

### **Use of Trademarks, Registered Trademarks, and other Protected Names and Symbols**

This manual may make reference to trademarks, registered trademarks, and other protected names and/or symbols of third-party companies not related in any way to StarTech.com. Where they occur these references are for illustrative purposes only and do not represent an endorsement of a product or service by StarTech.com, or an endorsement of the product(s) to which this manual applies by the third-party company in question. Regardless of any direct acknowledgement elsewhere in the body of this document, StarTech.com hereby acknowledges that all trademarks, registered trademarks, service marks, and other protected names and/or symbols contained in this manual and related documents are the property of their respective holders.

### **Technical Support**

StarTech.com's lifetime technical support is an integral part of our commitment to provide industry-leading solutions. If you ever need help with your product, visit [www.startech.com/support](http://www.startech.com/support) and access our comprehensive selection of online tools, documentation, and downloads.

### **Warranty Information**

This product is backed by a lifetime warranty.

In addition, StarTech.com warrants its products against defects in materials and workmanship for the periods noted, following the initial date of purchase. During this period, the products may be returned for repair, or replacement with equivalent products at our discretion. The warranty covers parts and labor costs only. StarTech.com does not warrant its products from defects or damages arising from misuse, abuse, alteration, or normal wear and tear.

### **Limitation of Liability**

In no event shall the liability of StarTech.com Ltd. and StarTech.com USA LLP (or their officers, directors, employees or agents) for any damages (whether direct or indirect, special, punitive, incidental, consequential, or otherwise), loss of profits, loss of business, or any pecuniary loss, arising out of or related to the use of the product exceed the actual price paid for the product. Some states do not allow the exclusion or limitation of incidental or consequential damages. If such laws apply, the limitations or exclusions contained in this statement may not apply to you.