

100Mbps Full/Low Profile Ethernet Multi Mode SC Fiber PCI NIC Card 2km

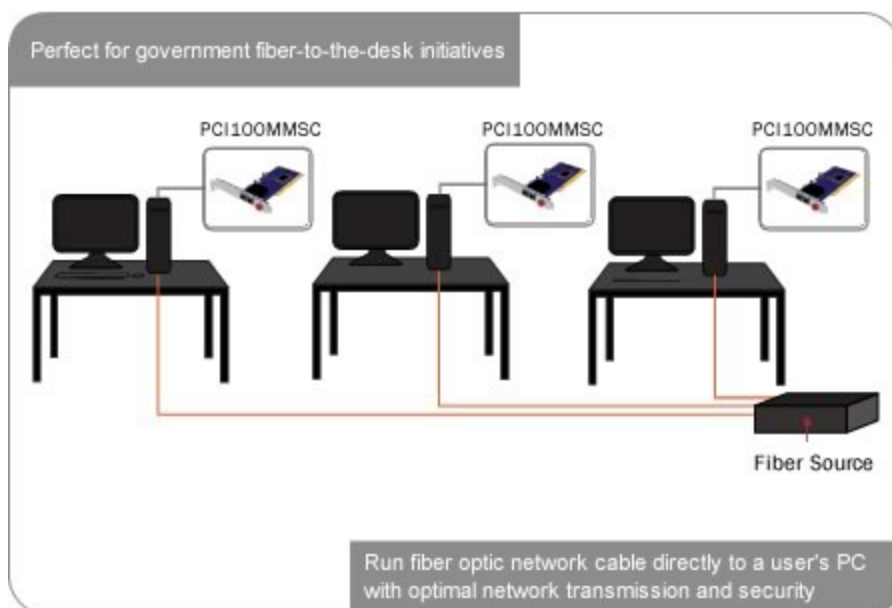
StarTech ID: PCI100MMSC

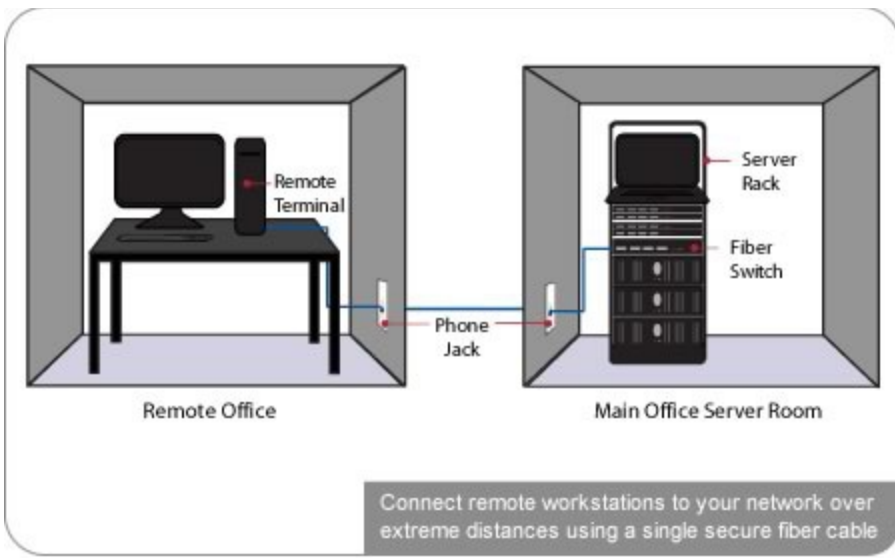


The PCI100MMSC 100 Mbps Fiber Optic (MM SC) PCI Ethernet Adapter Card offers the perfect "Fiber-to-the-desk" solution allowing you to add a multimode SC fiber port to your system through an available standard or low-profile PCI slot.

A simple solution for connecting a computer directly to a fiber network, the Fiber Ethernet Adapter card can be installed in the computer through any PCI slot and is perfectly suited for high bandwidth applications with support for Full Duplex operation and 10/100 Mbps transfer speeds at distances of up to 2km.

Application Diagrams: Installing the PCI100MMSC is a simple upgrade





Ideal for secure network setups, the PCI100MMSC offers a direct fiber connection which is not susceptible to electronic interference like standard RJ45 networks.

Backed by a StarTech.com 2-year warranty and free lifetime technical support.

Applications

- Add a 10/100 Mbps SC Fiber connection to a PCI compatible PC
- Add network connectivity to a PC up to 2km Away
- Create a secure connection between the PC and a fiber switch
- Perfect for remote embedded industrial monitoring systems, and high speed video surveillance

Features

- Compliant with PCI rev. 2.1 standards
- Advanced Configuration Power Management Interface (ACPI) 1.0
- Supports PCI Bus Power Managements Interface Ver. 1.0/1.1 and Network Device Class Power Managements Ver. 1.0a
- Supports PC99, PC2001, and NET PC requirements
- VLAN Management
- Optical Wavelength of 1310nm
- Maximum fiber distance up to 2km
- Wake on LAN support
- Connection diagnostic utilities
- WHQL drivers

Technical Specifications

Warranty	2 Years
Ports	1
Bus Type	PCI / PCI-X (5 / 3.3V)
Card Type	Standard Profile (LP bracket incl.)
Industry Standards	IEEE802.3u, 100Base-FX, IEEE802.3x, IEEE802.1Q, IEEE802.1p
Chipset ID	Via - VT6105M
Connector Type(s)	1 - PCI / PCI-X (Universal 3.3 & 5V; 32-bit) Male
External Ports	1 - Fiber Optic SC Female
Buffer Size	2 KB
Compatible Networks	100 Mbps
Full Duplex Support	Yes
OS Compatibility	Windows 2000/ XP(32/64bit)/ Server 2003(32/64bit)/ Vista(32/64bit)/ 7(32/64bit)/ Server 2008 R2, Unix, and Linux
Product Length	4.8 in [121 mm]
Product Width	2.2 in [56 mm]
Product Height	0.7 in [18 mm]
Product Weight	2.8 oz [80 g]
LED Indicators	1 - Green - Activity
LED Indicators	1 - Green - Link
Power Consumption	1W
Operating Temperature	05/17/2012eg;C to 455/17/2012eg;C (325/17/2012eg;F to 1135/17/2012eg;F)
Storage Temperature	-105/17/2012eg;C to 705/17/2012eg;C (145/17/2012eg;F to 1585/17/2012eg;F)
Humidity	5~95% RH
Shipping (Package) Weight	7.1 oz [200 g]
Included in Package	1 - PCI to SC 10/100 Fiber NIC
Included in Package	1 - Low profile bracket
Included in Package	1 - Driver CD
Included in Package	1 - Instruction Manual

Certifications, Reports and Compatibility

