

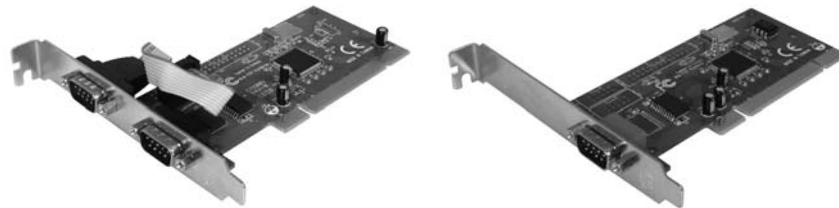
16950 RS-232 Dual Voltage / Dual Profile Serial Card

1 Port PCI 16950 RS-232 Dual Voltage / Dual Profile Serial Card

2 Port PCI 16950 RS-232 Dual Voltage / Dual Profile Serial Card

PCI1S950DV
PCI2S950DV

Instruction Manual



Actual product may vary from photo

FCC Compliance Statement

This equipment has been tested and found to comply with the limits for a Class B digital device, pursuant to part 15 of the FCC Rules. These limits are designed to provide reasonable protection against harmful interference in a residential installation. This equipment generates, uses and can radiate radio frequency energy and, if not installed and used in accordance with the instructions, may cause harmful interference to radio communications. However, there is no guarantee that interference will not occur in a particular installation. If this equipment does cause harmful interference to radio or television reception, which can be determined by turning the equipment off and on, the user is encouraged to try to correct the interference by one or more of the following measures:

- Reorient or relocate the receiving antenna.
- Increase the separation between the equipment and receiver.
- Connect the equipment into an outlet on a circuit different from that to which the receiver is connected.
- Consult the dealer or an experienced radio/TV technician for help.

Use of Trademarks, Registered Trademarks, and other Protected Names and Symbols

This manual may make reference to trademarks, registered trademarks, and other protected names and/or symbols of third-party companies not related in any way to StarTech.com. Where they occur these references are for illustrative purposes only and do not represent an endorsement of a product or service by StarTech.com, or an endorsement of the product(s) to which this manual applies by the third-party company in question. Regardless of any direct acknowledgement elsewhere in the body of this document, StarTech.com hereby acknowledges that all trademarks, registered trademarks, service marks, and other protected names and/or symbols contained in this manual and related documents are the property of their respective holders.

Table of Contents

Introduction	1
Features	1
Before You Begin	1
System Requirements	1
Contents	1
Installation	2
Installing the Serial card	2
Installing the drivers	2
Maximize data transfer rates	4
Specifications	5
Accessory Products from StarTech.com	5
Technical Support	6
Warranty Information	6

Introduction

Thank you for purchasing a StarTech.com 16950 RS-232 Dual Voltage Serial Card. This PCI I/O card allows you use DB-9 cables to connect various serial devices, to any computer with an available PCI expansion slot.

Features

- Two high performance 16C950 UART channels
- Maximum data transfer rate of 460 Kbps
- PCI 2.2 and PCI Power Management 1.0 compliant
- 128-byte deep FIFO per transmitter and receiver
- Automated in-band software flow control using programmable Xon/Xoff in both directions
- Automated out-of-band hardware flow control using RTS / CTS and/or DSR / DTR

Before You Begin

System Requirements

- A computer with an available PCI port
- A computer running Windows NT4, 95 / 98 / ME / 2000 / XP, and Linux
- A CD-ROM, DVD-ROM, or other compatible optical drive (for software installation)
- Pentium class PC or higher with an available PCI or PCI-X slot
- A standard DB9-M Serial Cable for each port (Please see **Accessory Products**)

Contents

This package should contain:

- PCI / PCI-X Serial Card (1)
- Low Profile Bracket (1)
- Instruction Manual (1)
- Driver CD (1)

Installation

Installing the Serial Card

1. Shut down all power connected to the computer, as well as all devices connected to the computer peripherally (i.e. Printers, Monitors, Scanners etc.). As an added step to ensure safe installation, unplug the power supply from the computer.
2. Remove the computer cover. For more detailed instruction on how to perform this step, please refer to the documentation that was included with your computer at the time of purchase.
3. Locate an empty PCI slot, removing the metal bracket covering the accompanying empty port/socket.
4. Position the serial card above the open PCI slot, ensuring that the card is aligned with the entire slot. Insert the card firmly into the slot, distributing force evenly across the length of the board. Once inserted, secure the card into the adjoining socket (previously covered by metal bracket), using the correct size screw (please consult documentation that accompanied purchase of computer).
5. Replace the computer cover and re-connect all power to the computer.

Installing the drivers

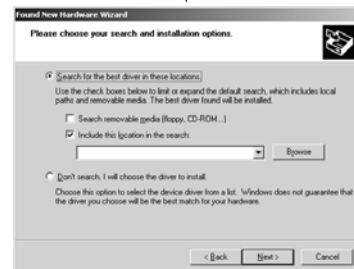
Windows

Upon rebooting the computer for the first time following the installation of the serial card, Windows will notify you that new hardware has been detected. At this time, you will be prompted for driver installation.

1. Select **Install from a specific location**, insert the Driver CD and click **Next**.



2. At the screen that follows, select **Search for the best drivers in these locations**, and place a checkmark next to **Include this location in the search**. Ensure that the proper file path has been specified, then click **Next**.



Instruction Manual

3. Windows will then notify you that the software being installed has not passed the Windows Logo testing process. Please disregard this warning, and click **Continue Anyway**:



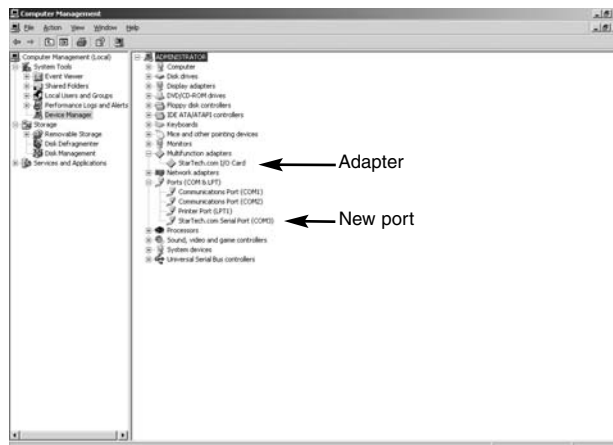
4. Windows will then proceed with installing the serial card. When complete, you will be notified that the wizard has finished installation. Please click **Finish**.



5. Once the card has been installed, Windows will require that the same steps be followed in order to install the serial ports. As such, to complete installation, please repeat steps #1-4. For PCI2S950DV, the second serial port will require installation, which will automatically launch following installation of the first port. As such, if you are installing PCI2S950DV, you will be required to follow steps #1-4 a third time.

6. Following installation, please right-click on **My Computer**, and click **Manage**. Click on **Device Manager** to view installed components. Here, you will find the newly installed adapter and ports:

Please note: PCI2S950DV installation will result in two ports being displayed in Device Manager



Maximize data transfer rates

Once installation is complete, you will be able to configure the port(s) provided by the card, as you would any other serial port. To do so, browse through the following path:

Start > Control Panel > System > Hardware (tab) > Device Manager

To maximize the port data transfer capability, right-click on one of the newly installed ports, and select **Properties**. Once the Properties window opens, click on the **Data Rate** tab. Here you will see a button labelled **Detect Crystal Frequency**. Click on the button to automatically detect the port data transfer capability. Please note that while PCI1S950DV only requires one such configuration, PCI2S950DV will require configuration for each separate port.

Specifications

Bus Type	PCI 5V / PCI-X 3.3V
Connectors	PCI1S950DV - 1 x DB9 Male RS-232 Serial Connector PCI2S950DV - 2 x DB9 Male RS-232 Serial Connector
Data Transfer Rate (Max.)	460 Kbps
Chipset	OX16PCI952
OS Support	Supports Windows NT4, 95 / 98 / ME / 2000 / XP, and Linux

Accessory Products from StarTech.com

Contact your local StarTech.com dealer or visit www.startech.com for cables or other accessories that will help you get the best performance out of your new product.

MC3MF

3 ft. AT Modem Cable DB9F-DB25M

MC6MF

6 ft. AT Modem Cable (male to female)

MXT100

6 ft. 9-pin Straight Through Cable (male to female)

MXT100_25

25 ft. 9-pin Straight Through Cable (male to female)

AT925FF

Adapter DB9F to DB25F

AT925FM

Adapter DB9F to DB25M

AT925SFM

Slimline Adapter DB9F to DB25M

SCNM925FM

10 ft. Cross Wired Serial/Null Modem Cable DB9F to DB25M

SCNM9FF

10 ft. Cross Wired Serial/Null Modem Cable DB9 F/F

SCNM9FF25

25 ft. Cross Wired Serial/Null Modem Cable DB9 F/F

SCNM9FM

10 ft. Cross Wired Serial/Null Modem Cable DB9 F/M

MXT100FF

6 ft. Modem Cable DB9F-DB9F

Technical Support

StarTech.com's lifetime technical support is an integral part of our commitment to provide industry-leading solutions. If you ever need help with your product, visit www.startech.com/support and access our comprehensive selection of online tools, documentation, and downloads.

Warranty Information

This product is backed by a lifetime warranty. In addition, StarTech.com warrants its products against defects in materials and workmanship for the periods noted, following the initial date of purchase. During this period, the products may be returned for repair, or replacement with equivalent products at our discretion. The warranty covers parts and labor costs only. StarTech.com does not warrant its products from defects or damages arising from misuse, abuse, alteration, or normal wear and tear.

Limitation of Liability

In no event shall the liability of StarTech.com Ltd. and StarTech.com USA LLP (or their officers, directors, employees or agents) for any damages (whether direct or indirect, special, punitive, incidental, consequential, or otherwise), loss of profits, loss of business, or any pecuniary loss, arising out of or related to the use of the product exceed the actual price paid for the product.

Some states do not allow the exclusion or limitation of incidental or consequential damages. If such laws apply, the limitations or exclusions contained in this statement may not apply to you.

About StarTech.com

StarTech.com is “The Professionals’ Source for Hard-to-Find Computer Parts”. Since 1985, we have been providing IT professionals with the quality products they need to complete their solutions. We offer an unmatched selection of computer parts, cables, server management solutions and A/V products and serve a worldwide market through our locations in the United States, Canada, the United Kingdom and Taiwan.

Visit **www.startech.com** for complete information about all our products and to access exclusive interactive tools such as the Parts Finder and the KVM Reference Guide. StarTech.com makes it easy to complete almost any IT solution. Find out for yourself why our products lead the industry in performance, support, and value.