

2 Port PCI Express FireWire 400 Card with Digital Video Editing Kit

PEX1394A2DV



StarTech.com 
Making hard-to-find easy!

FCC Compliance Statement

This equipment has been tested and found to comply with the limits for a Class B digital device, pursuant to part 15 of the FCC Rules. These limits are designed to provide reasonable protection against harmful interference in a residential installation. This equipment generates, uses and can radiate radio frequency energy and, if not installed and used in accordance with the instructions, may cause harmful interference to radio communications. However, there is no guarantee that interference will not occur in a particular installation. If this equipment does cause harmful interference to radio or television reception, which can be determined by turning the equipment off and on, the user is encouraged to try to correct the interference by one or more of the following measures:

- Reorient or relocate the receiving antenna.
- Increase the separation between the equipment and receiver.
- Connect the equipment into an outlet on a circuit different from that to which the receiver is connected.
- Consult the dealer or an experienced radio/TV technician for help.

Use of Trademarks, Registered Trademarks, and other Protected Names and Symbols

This manual may make reference to trademarks, registered trademarks, and other protected names and/or symbols of third-party companies not related in any way to StarTech.com. Where they occur these references are for illustrative purposes only and do not represent an endorsement of a product or service by StarTech.com, or an endorsement of the product(s) to which this manual applies by the third-party company in question. Regardless of any direct acknowledgement elsewhere in the body of this document, StarTech.com hereby acknowledges that all trademarks, registered trademarks, service marks, and other protected names and/or symbols contained in this manual and related documents are the property of their respective holders.

Table of Contents

Introduction	1
Features	1
Package Contents	1
Installation.....	2
Installing the PCI Express card	2
Installing the Drivers	2
Verifying Driver installation	2
Specifications	4
Technical Support	5
Warranty Information	5

Introduction

Thank you for purchasing a StarTech.com 2 Port PCI Express FireWire 400 Card with Digital Video Editing Kit. Supporting single lane PCI Express installation, this card provides FireWire data transfer rates of up to 400Mbps for high speed connections to a broad range of FireWire peripherals.

Plus, PEX1394A2DV includes ULEAD® Video Editing software, allowing for simple editing of video from connected devices including Digital Cameras, external hard drives, DV camcorders, webcams, personal multimedia players and more.

Features

- Includes everything needed to edit your own home movies, add scene transitions and other effects with the included ULEAD® VideoStudio® SE software
- Provides high speed data transfer rates of up to 400 Mbps
- Compliant with PCI Express Specification 1.0a
- Easy to Install and use

Package Contents

- 1 X 2 Port FireWire Card
- 1 X 5' Firewire 4-6 pin M/M Cable
- 1 X ULEAD® Ver. 10.0 Video Editing Software CD
- 1 X Instruction Manual

Installation

Installing the PCI Express card

WARNING! PCI Express cards, like all computer equipment, can be severely damaged by static electricity. Be sure that you are properly grounded before opening your computer case or touching your card.

1. Make sure that your system is unplugged and that you are grounded.
2. Remove the cover of your system (see your computer's user manual for details, if necessary) and gently turn your computer onto its side, so that the PCI Express expansion slot openings on the motherboard are facing upwards.
3. Locate an empty PCI Express slot and remove the metal plate that covers the corresponding rear bracket. You may need a Phillips screw driver to perform this step. Retain the screw! You will need it to secure the card later.
4. Gently insert the card into the empty slot, making sure it is firmly seated.
5. Secure the card in place using the screw you removed in Step 3.
6. Replace and secure the computer cover.

Installing the Drivers

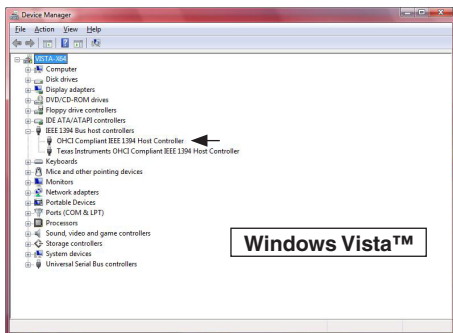
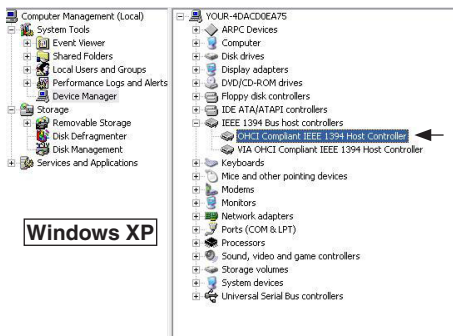
Once the PCI Express card has been installed, it is safe to power up the computer. The operating system will detect the presence of the card and automatically install the necessary drivers.

Verifying Driver installation

1. To verify that the drivers have successfully been installed on a computer running Windows 2000, XP or Vista™.
2. From the desktop, right-click on **My Computer** (Computer for Windows Vista™), and select **Manage**.

3. In the **Computer Management** window that appears, click on **Device Manager** in the left pane.

In the **right** pane, click on **IEEE1394 Bus Host Controllers**. If the card is installed correctly, you will see a listing for OHCI Compliant IEEE 394 Host Controller:



Specifications

Regulatory Certifications	FCC, CE, ROHS
Bus Type	1394A PCI Express Card
Connectors	2 x FireWire (6-pin) (female)
Maximum Data Transfer Rate	400Mbps
Chipset	JMicron JM381
OS Support	Windows 2000/XP/Vista™

Technical Support

StarTech.com's lifetime technical support is an integral part of our commitment to provide industry-leading solutions. If you ever need help with your product, visit www.startech.com/support and access our comprehensive selection of online tools, documentation, and downloads.

Warranty Information

This product is backed by a lifetime warranty. In addition, StarTech.com warrants its products against defects in materials and workmanship for the periods noted, following the initial date of purchase. During this period, the products may be returned for repair, or replacement with equivalent products at our discretion. The warranty covers parts and labor costs only. StarTech.com does not warrant its products from defects or damages arising from misuse, abuse, alteration, or normal wear and tear.

Limitation of Liability

In no event shall the liability of StarTech.com Ltd. and StarTech.com USA LLP (or their officers, directors, employees or agents) for any damages (whether direct or indirect, special, punitive, incidental, consequential, or otherwise), loss of profits, loss of business, or any pecuniary loss, arising out of or related to the use of the product exceed the actual price paid for the product. Some states do not allow the exclusion or limitation of incidental or consequential damages. If such laws apply, the limitations or exclusions contained in this statement may not apply to you.



StarTech.com has been making “hard-to-find easy” since 1985, providing high quality solutions to a diverse IT and A/V customer base that spans many channels, including government, education and industrial facilities to name just a few. We offer an unmatched selection of computer parts, cables, A/V products, KVM and Server Management solutions, serving a worldwide market through our locations in the United States, Canada, the United Kingdom and Taiwan.

Visit **www.startech.com** today for complete information about all our products and to access exclusive interactive tools such as the Cable Finder, Parts Finder and the KVM Reference Guide.