

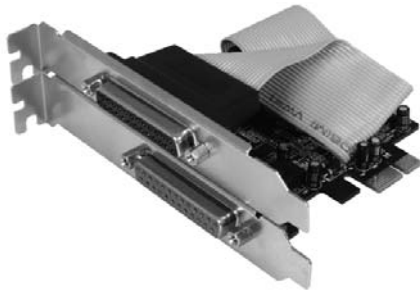
# PCI Express Parallel Card

1 Port EPP/ECP PCI Express Parallel Card

2 Port EPP/ECP PCI Express Parallel Card

PEX1PECP  
PEX2PECP

Instruction Manual



Actual product may vary from photo

**StarTech.com**

The Professionals' Source for Hard-to-Find Computer Parts

## **FCC Compliance Statement**

This equipment has been tested and found to comply with the limits for a Class B digital device, pursuant to part 15 of the FCC Rules. These limits are designed to provide reasonable protection against harmful interference in a residential installation. This equipment generates, uses and can radiate radio frequency energy and, if not installed and used in accordance with the instructions, may cause harmful interference to radio communications. However, there is no guarantee that interference will not occur in a particular installation. If this equipment does cause harmful interference to radio or television reception, which can be determined by turning the equipment off and on, the user is encouraged to try to correct the interference by one or more of the following measures:

- Reorient or relocate the receiving antenna.
- Increase the separation between the equipment and receiver.
- Connect the equipment into an outlet on a circuit different from that to which the receiver is connected.
- Consult the dealer or an experienced radio/TV technician for help.

## **Use of Trademarks, Registered Trademarks, and other Protected Names and Symbols**

This manual may make reference to trademarks, registered trademarks, and other protected names and/or symbols of third-party companies not related in any way to StarTech.com. Where they occur these references are for illustrative purposes only and do not represent an endorsement of a product or service by StarTech.com, or an endorsement of the product(s) to which this manual applies by the third-party company in question. Regardless of any direct acknowledgement elsewhere in the body of this document, StarTech.com hereby acknowledges that all trademarks, registered trademarks, service marks, and other protected names and/or symbols contained in this manual and related documents are the property of their respective holders.

## Table of Contents

<b>Introduction</b> .....	<b>1</b>
<b>Features</b> .....	<b>1</b>
<b>Before you begin</b> .....	<b>1</b>
Contents .....	1
System Requirements .....	1
<b>Installation</b> .....	<b>2</b>
Installing the drivers (Windows XP) .....	2
Verifying installation .....	4
Parallel port address configuration .....	4
Windows 2000 .....	5
Windows 2003 Server .....	5
<b>Specifications</b> .....	<b>5</b>
<b>Technical Support</b> .....	<b>5</b>
<b>Warranty information</b> .....	<b>5</b>

## **Introduction**

Thank you for purchasing a StarTech.com PCI Express Parallel Card. This card will allow you to add a DB25 connectivity for optimized performance from your parallel devices, while taking advantage of the speed and power of PCI Express with plug and play connections to devices such as printers, scanners and more.

## **Features**

- Compliant with PCI Express Base Specification 1.0a
- Supports Standard Parallel Port(SPP), Enhanced Parallel Port (EPP), & Enhanced Capability Port (ECP)
- Offers data transfer rates of up to 1.5MB/Sec

## **Before you Begin**

### **Contents**

- PCI Parallel Card(1)
- Instruction Manual(1)
- Driver CD(1)

### **System Requirements**

- Windows 2000/XP/Server 2003
- PCI Express enabled computer with an available PCI Express slot

## Installation

1. Make sure that your system is unplugged and that you are grounded.
2. Remove the cover of your system (see your computer's user manual for details, if necessary) and gently turn your computer onto its side, so that the PCI Express expansion slot openings on the motherboard are facing upwards.
3. Locate an empty PCI Express slot and remove the metal plate that covers the corresponding rear bracket. You may need a Phillips screwdriver to perform this step. Retain the screw! You will need it to secure the card later.
4. Gently insert the card into the empty slot, making sure it is firmly seated.
5. Secure the card in place using the screw you removed in Step 3.  
*5b. PEX2PECP Only: Secure the second port to another available rear bracket.*
6. Replace and secure the computer cover.

## Installing the Drivers

Upon rebooting the computer, Windows will detect the newly installed card, and launch the **Found New Hardware Wizard**.

### Windows XP

1. When the **Found New Hardware Wizard** appears, select **Install from a list or specific location (Advanced)**, then click **Next**.



## Instruction Manual

2. Insert the Driver CD, and select **Search for the best driver in these locations**. Please ensure that there is a checkmark next to **Include this location in the search**, and that all other checkmarks have been removed. Enter the following path in the text line provided:

For PEX1PECP :       **D:\PCIe\1PXP**  
For PEX2PECP :       **D:\PCIe\2PXP**

Alternatively, you can click on the **Browse** button, and locate the file according to the path specified above.

Once the correct folder has been selected, please click on the **Next** button to advance.



3. If you receive a notification that the drivers you are installing have not yet passed Windows Logo Testing, please click on **Continue Anyway**, followed by **Finish**. Please note that the software included with PEX1PECP/PEC2PECP has been thoroughly tested for stability and compatibility.



4. Windows will notify you once the driver installation has completed. Please click **Finish**.

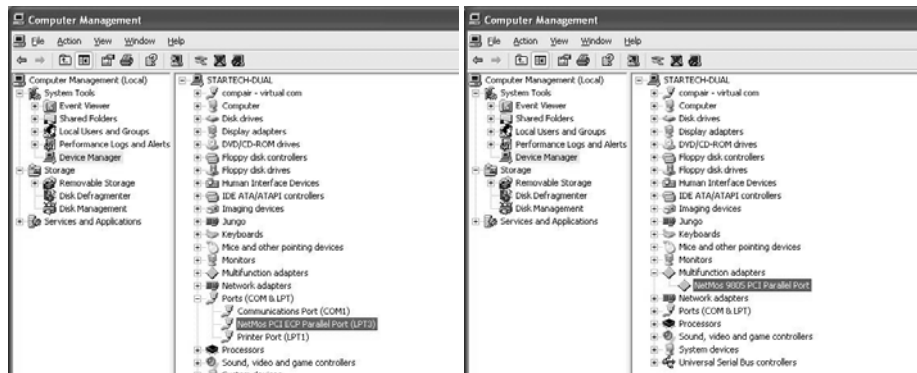


You will be required to follow steps 1-4 again, following the initial installation. Please repeat these steps to conclude installation.

### Verifying installation

To verify that the installation has completed successfully and that the newly installed ports are now available:

1. Right click on **My Computer**, left-click on **Manage**. Select **Device Manager**.
2. Click on the [+] sign next to **Ports (COM & LPT)**. Here, you should see the newly installed parallel port(s) as well as a **Multifunction adapter**, as shown below:



### Parallel Port Address configuration

Some parallel devices require a specific port designation, in order for the devices to function properly. If your peripherals are functioning correctly with the newly installed ports, there is no need to modify the parallel port address. However, if you are experiencing difficulties:

1. From the **Device Manager** window, double-click **Ports (COM & LPT)**, then double-click the **NetMos PCI ECP Parallel Port**.
2. Select the **Port Settings** tab.
3. At the **LPT Port Number** box, click on the down arrow and select an LPT port that is not in use:

Following this selection, please click on **OK** to save your changes.



### Windows 2000

1. When the **Found New Hardware Wizard** appears, click **Next** to advance to the next window.
2. Select **Search for a suitable driver for my device (recommended)** and click **Next**.
3. Check **Specify a location**, and remove all other checkmarks from this window.
4. Insert the Driver CD, and enter the following path in the text line beneath **Copy manufacturer's files from**:

For PEX1PECP :       **D:\PCIe\1P\2000**  
For PEX2PECP :       **D:\PCIe\2P\2000**

Alternatively, you can click on the **Browse** button, and locate the file according to the path specified above.

Once the correct folder has been selected, please click on the **OK** button to advance.

5. Click **Next**, to approve the installation. Click **Finish**, once the installation has completed.

### Windows 2003 Server

1. At the Found New Hardware Wizard, select **Install from a list or specific location (Advanced)**, then click **Next**.
2. Insert the Driver CD, and select **Search for the best driver in these locations**. Place a checkmark next to **Include this location in the search**, and remove any other checkmarks from this page.
3. In the text box provided, type in:

For PEX1PECP :       **D:\PCIe\1P\2003**  
For PEX2PECP :       **D:\PCIe\2P\2003**

Alternatively, you can click on the **Browse** button, and locate the file according to the path specified above.

4. Once the correct folder has been selected, please click on the **Next** button to advance.
5. If you receive a notification that the drivers you are installing have not yet passed Windows Logo Testing, please click on **Continue Anyway**, followed by **Finish**. Please note that the software included with PEX1PECP/PEC2PECP has been thoroughly tested for stability and compatibility.

You will be required to follow steps 1-5 again, following the initial installation. Please repeat these steps to complete installation.

**Specifications**

<b>Bus Type</b>	PCI Express
<b>Connectors</b>	PEX1PECP: 1 x 25 pins parallel connector PEX2PECP: 2 x 25 pins parallel connector
<b>Data Transfer Rate (Max.)</b>	1.5MB/sec
<b>Chipset</b>	MOSCHIP MCS9805CV MOSCHIP MCS9815CV
<b>OS Support</b>	Windows® 2000/XP/Server 2003
<b>Operation Temperature</b>	0 °C ~ 70 °C
<b>Storage Temperature</b>	0 ~ 115 °C
<b>Product Dimensions</b>	PEX1PECP: 92x21x120mm PEX2PECP: 92x21x120mm + 40x21x120mm
<b>Product Weight</b>	PEX1PECP: 90g PEX2PECP: 95g

**Technical Support**

StarTech.com's lifetime technical support is an integral part of our commitment to provide industry-leading solutions. If you ever need help with your product, visit [www.startech.com/support](http://www.startech.com/support) and access our comprehensive selection of online tools, documentation, and downloads.

**Warranty Information**

This product is backed by a thirteen-month warranty. In addition, StarTech.com warrants its products against defects in materials and workmanship for the periods noted, following the initial date of purchase. During this period, the products may be returned for repair, or replacement with equivalent products at our discretion. The warranty covers parts and labor costs only. StarTech.com does not warrant its products from defects or damages arising from misuse, abuse, alteration, or normal wear and tear.

**Limitation of Liability**

In no event shall the liability of StarTech.com Ltd. and StarTech.com USA LLP (or their officers, directors, employees or agents) for any damages (whether direct or indirect, special, punitive, incidental, consequential, or otherwise), loss of profits, loss of business, or any pecuniary loss, arising out of or related to the use of the product exceed the actual price paid for the product.

Some states do not allow the exclusion or limitation of incidental or consequential damages. If such laws apply, the limitations or exclusions contained in this statement may not apply to you.

Revised: 11 October 2006 (Rev. A)