

Dual Profile PCI-Express RS-232 Serial Card (2 port Serial, 1 port Parallel*)

*PEX2S5521P
PEX1S552
PEX2S552

Instruction Guide



*PEX2S5521P shown

FCC Compliance Statement

This equipment has been tested and found to comply with the limits for a Class B digital device, pursuant to part 15 of the FCC Rules. These limits are designed to provide reasonable protection against harmful interference in a residential installation. This equipment generates, uses and can radiate radio frequency energy and, if not installed and used in accordance with the instructions, may cause harmful interference to radio communications. However, there is no guarantee that interference will not occur in a particular installation. If this equipment does cause harmful interference to radio or television reception, which can be determined by turning the equipment off and on, the user is encouraged to try to correct the interference by one or more of the following measures:

- Reorient or relocate the receiving antenna.
- Increase the separation between the equipment and receiver.
- Connect the equipment into an outlet on a circuit different from that to which the receiver is connected.
- Consult the dealer or an experienced radio/TV technician for help.

Use of Trademarks, Registered Trademarks, and other Protected Names and Symbols

This manual may make reference to trademarks, registered trademarks, and other protected names and/or symbols of third-party companies not related in any way to StarTech.com. Where they occur these references are for illustrative purposes only and do not represent an endorsement of a product or service by StarTech.com, or an endorsement of the product(s) to which this manual applies by the third-party company in question. Regardless of any direct acknowledgement elsewhere in the body of this document, StarTech.com hereby acknowledges that all trademarks, registered trademarks, service marks, and other protected names and/or symbols contained in this manual and related documents are the property of their respective holders.

Table of Contents

Introduction	1
Features	1
Package Contents	1
Hardware Guide	2
Installation.....	2
Hardware Installation.....	2
Software Installation	4
Verifying Successful Installation	6
Specifications	7
Technical Support	8
Warranty Information	8

Introduction

Thank you for your purchase of a StarTech.com PEX1S552/PEX2S552/PEX2S5521P Dual Profile PCI Express card. This convenient I/O solution utilizes a native, single-chip design for maximum performance and reliability, and includes an optional low profile bracket that allows the card to be installed in virtually any size/form factor case.

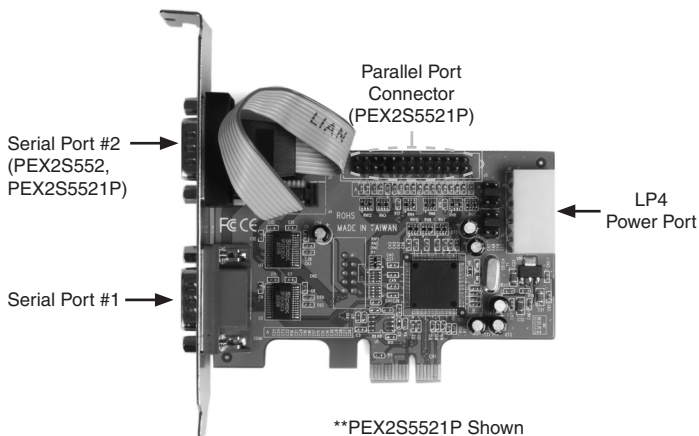
Features

- Native PCI Express (single chip)
- Adds two high speed RS-232 serial ports, one parallel port
- Supports data transfer rates of up to: 2.7 Mbps (parallel)
460.8 Kbps (serial)
- Configurable in 5V, 12V, and RI (non-powered) modes
- Compliant with PCI Express base specifications revision 1.0a
- 128-byte deep FIFO per transmitter and receiver
- Automated in-band flow control using programmable Xon/Xoff in both directions
- Automated out-of-band flow control using CTS/RTS and DSR/DTR
- Standard and low profile bracket included

Package Contents

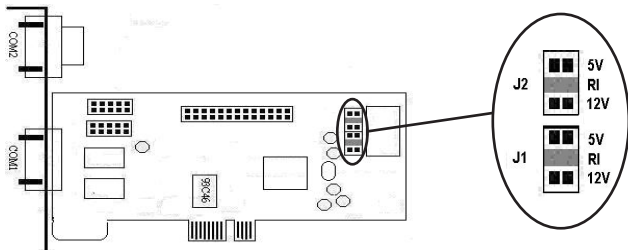
- 1 x 2 Port PCI-Express RS-232 Serial Card
- 1 x Separate parallel port (with ribbon cable)
- 1 x Driver CD
- 1 x Instruction Manual
- Low Profile Brackets: **PEX1S552** - 1 low profile bracket included
PEX2S552 - 2 low profile brackets included
PEX2S5521P - 3 low profile brackets included

Hardware Guide



Installation

WARNING! PCI Express cards, like all computer equipment, can be severely damaged by static electricity. Be sure that you are properly grounded before opening your computer case or touching your card. StarTech.com recommends that you wear an anti-static strap when installing any computer component. If an anti-static strap is unavailable, discharge yourself of any static electricity build-up by touching a large grounded metal surface (such as the computer case) for several seconds. Also be careful to handle the card by its edges and not the gold connectors.



Setting Power Mode

This card is specially designed to allow for power output from the ninth pin of the DB9 connector(s) for devices that support power over serial. This card allows users to set each port with 5V, 12V, or RI (no power). Users can also choose to draw the necessary power from the system power supply by connecting to the LP4 power connector.

Hardware Installation

1. Remove the cover of your system (see your computer's user manual for details, if necessary) and gently turn your computer onto its side, so that the PCI Express expansion slot openings on the motherboard are facing upwards.
2. Locate an empty PCI Express slot and remove the metal plate that covers the corresponding rear bracket. You may need a Phillips screw driver to perform this step. Retain the screw! You will need it to secure the card later.

PEX2S5521P Only: Please ensure that the metal plate that covers the rear bracket adjacent to the above mentioned bracket is vacant, so that it can be used for parallel port installation).

3. Gently insert the card into the empty slot, making sure it is firmly seated, then secure the card in place using the screw you removed in Step 3.
4. **PEX2S5521P:** Connect the ribbon cable provided by the (separate) parallel port to the provided slot on the PEX2S5521P board (please

see diagram on previous page), then secure the parallel port to the slot adjacent to the one used to secure the main PEX2S5521P board.

- Once the card (and additional port, if necessary) are secured to the motherboard (and within the case), replace the computer cover and power on the computer, then proceed to the next section, titled **Software Installation**.

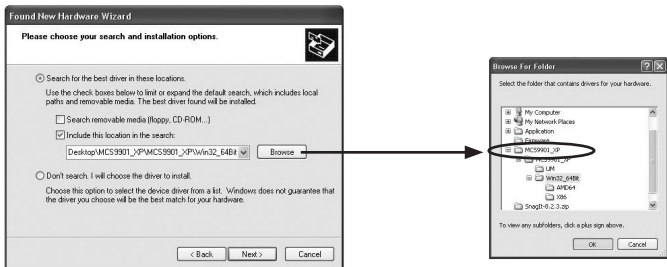
Software Installation



When the computer is booted up following the physical installation of the PCI Express card, the operating system will detect the presence of the card within the computer system and prompt for software installation:

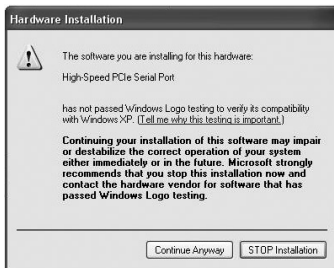


1. The Found New Hardware Wizard will appear. When asked if you want Windows to search for software, select **No, not this time**, then click **Next** to continue:
2. On the screen that follows, select **Install from a list or specific**



location, then click on **Next**.

3. On the screen that follows, select **Search for the best driver in these locations**. Ensure there is a checkmark next to **Include this location in the search**, then click **Browse** to locate the correct file. (Please



note: The correct file can be located on the accompanying CD in the **MCS9901** folder).

Once you've specified the correct file, please click **Next** to continue.

4. A Windows security warning will appear, notifying you that the software

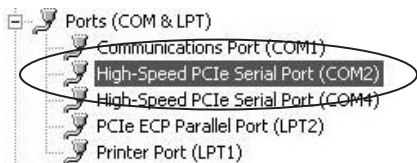
you are installing has not passed Windows Logo testing. Please click on **Continue Anyway**:

- Once the driver files have been installed, you will be notified that the Wizard has finished installing the software for “High Speed PCIe Serial Port”. Please click on **Finish**.
- PEX2S552**: Repeat steps 1-5 once more for the remaining serial port to be installed.

PEX2S552: Repeat steps 1-5 twice more, once for each of the remaining ports (one serial, one parallel).

Verifying Successful Installation

To verify that installation was successful:



- Right-click on **My Computer** and select **Manage** to open the Computer Management window.
- In the left pane, select **Device Manager**.
- In the right pane, click on **Ports (COM & LPT)**. You should see the newly added ports listed here:

Specifications

	PEX1S552	PEX2S552	PEX2S552
Bus Type	PCI Express		
Chipset	Moschip MCS9901CV		
Maximum Data Transfer Rate	Serial: 460.8 Kbps	Serial: 460.8 Kbps	Parallel: 2.7 Mbps Serial: 460.8 Kbps
OS Support	Windows® 2000/XP/2003/Vista™ Linux Kernel 2.6.11 and above MAC OS 10.4 & above		
Connectors	1 x RS-232 Serial	2 x RS-232 Serial	2 x Serial 1 x Parallel
Product Dimensions (LxWxH)	105mm (4.13") x 120mm (4.72") x 20mm (0.79")		
Product Weight	51.5 g (1.82 oz)	63.5 g (2.24 oz)	140 g (4.94oz)
Regulatory Certifications	CE, FCC, RoHS		

Technical Support

StarTech.com's lifetime technical support is an integral part of our commitment to provide industry-leading solutions. If you ever need help with your product, visit www.startech.com/support and access our comprehensive selection of online tools, documentation, and downloads.

Warranty Information

This product is backed by a Lifetime warranty. In addition, StarTech.com warrants its products against defects in materials and workmanship for the periods noted, following the initial date of purchase. During this period, the products may be returned for repair, or replacement with equivalent products at our discretion. The warranty covers parts and labor costs only. StarTech.com does not warrant its products from defects or damages arising from misuse, abuse, alteration, or normal wear and tear.

Limitation of Liability

In no event shall the liability of StarTech.com Ltd. and StarTech.com USA LLP (or their officers, directors, employees or agents) for any damages (whether direct or indirect, special, punitive, incidental, consequential, or otherwise), loss of profits, loss of business, or any pecuniary loss, arising out of or related to the use of the product exceed the actual price paid for the product. Some states do not allow the exclusion or limitation of incidental or consequential damages. If such laws apply, the limitations or exclusions contained in this statement may not apply to you.



StarTech.com has been making “hard-to-find easy” since 1985, providing high quality solutions to a diverse IT and A/V customer base that spans many channels, including government, education and industrial facilities to name just a few. We offer an unmatched selection of computer parts, cables, A/V products, KVM and Server Management solutions, serving a worldwide market through our locations in the United States, Canada, the United Kingdom and Taiwan.

Visit **www.startech.com** today for complete information about all our products and to access exclusive interactive tools such as the Cable Finder, Parts Finder and the KVM Reference Guide. StarTech.com makes it easy to complete almost any IT or A/V solution. Find out for yourself why our products lead the industry in performance, support, and value.