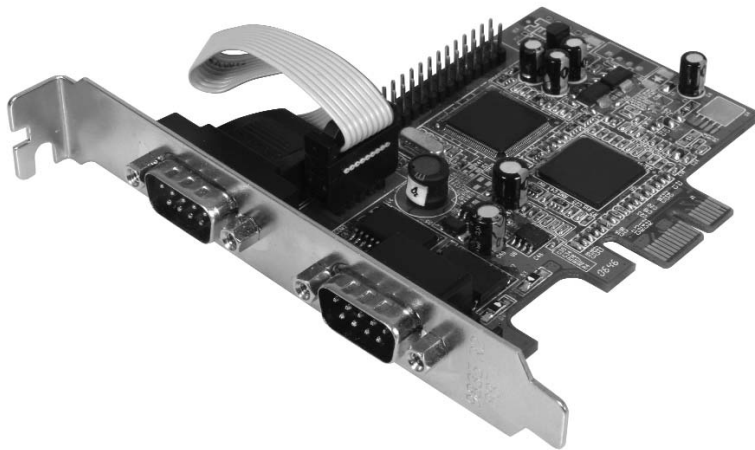


PCI Express Serial Card

2 Port PCI-Express 16C950 Serial Card

PEX2S950

Instruction Manual



Actual product may vary from photo

StarTech.com 
Making hard-to-find easy!

FCC Compliance Statement

This equipment has been tested and found to comply with the limits for a Class B digital device, pursuant to part 15 of the FCC Rules. These limits are designed to provide reasonable protection against harmful interference in a residential installation. This equipment generates, uses and can radiate radio frequency energy and, if not installed and used in accordance with the instructions, may cause harmful interference to radio communications. However, there is no guarantee that interference will not occur in a particular installation. If this equipment does cause harmful interference to radio or television reception, which can be determined by turning the equipment off and on, the user is encouraged to try to correct the interference by one or more of the following measures:

- Reorient or relocate the receiving antenna.
- Increase the separation between the equipment and receiver.
- Connect the equipment into an outlet on a circuit different from that to which the receiver is connected.
- Consult the dealer or an experienced radio/TV technician for help.

Use of Trademarks, Registered Trademarks, and other Protected Names and Symbols

This manual may make reference to trademarks, registered trademarks, and other protected names and/or symbols of third-party companies not related in any way to StarTech.com. Where they occur these references are for illustrative purposes only and do not represent an endorsement of a product or service by StarTech.com, or an endorsement of the product(s) to which this manual applies by the third-party company in question. Regardless of any direct acknowledgement elsewhere in the body of this document, StarTech.com hereby acknowledges that all trademarks, registered trademarks, service marks, and other protected names and/or symbols contained in this manual and related documents are the property of their respective holders.

Table of Contents

Introduction	1
Features	1
Before You Begin	1
System Requirements	1
Contents	1
Installation	2
Hardware Installation	2
Software Installation	2
Maximize data transfer rates	3
Specifications	4
Technical Support	4
Warranty Information	4

Introduction

Thank you for purchasing a StarTech.com 2 Port PCI-Express 16C950 Serial Card. This card allows you to harness the speed, power and reliability offered by the PCI Express interface, in order to connect your serial peripherals.

Features

- 128-byte deep FIFO per transmitter and receiver
- Automated in-band software flow control using programmable Xon/Xoff in both directions
- Automated out-of-band hardware flow control using RTS / CTS and/or DSR / DTR
- Maximum data transfer rate of 460 Kbps
- PCI 2.2, PCI Power Management 1.0 compliant
- Dual Channel 16C950 UART
- UARTs fully compatible with 16C550 type devices

Before You Begin

System Requirements

- A computer with an available PCI Express port
- A computer running Windows NT4, 95 / 98 / ME / 2000 / XP, and Linux
- A CD-ROM, DVD-ROM, or other compatible optical drive (for software installation)
- Serial cables necessary to connect device to peripherals

Package Contents

This package should contain:

- PCI Express Serial Card
- Instruction Manual
- Driver CD

Installation



WARNING! PCI Express cards, like all computer equipment, can be severely damaged by static electricity. Be sure that you are properly grounded before opening your computer case or touching your card. StarTech.com recommends that you wear an anti-static strap when installing any computer component. If an anti-static strap is unavailable, discharge yourself of any static electricity build-up by touching a large grounded metal surface (such as the computer case) for several seconds. Also be careful to handle the card by its edges and not the gold connectors.

Hardware Installation

1. Remove the computer cover. For more detailed instruction on how to perform this step, please refer to the documentation that was included with your computer at the time of purchase.
2. Locate an empty PCI Express slot, removing the metal bracket covering the accompanying empty port/socket.
3. Position the card above the open PCI Express slot, ensuring that the card is properly aligned with the slot. Insert the card firmly into the slot, distributing force evenly across the length of the board. Once inserted, secure the card into the adjoining socket (previously covered by metal bracket), using the correct size screw.
4. Replace the computer cover and re-connect all power to the computer.

Software Installation

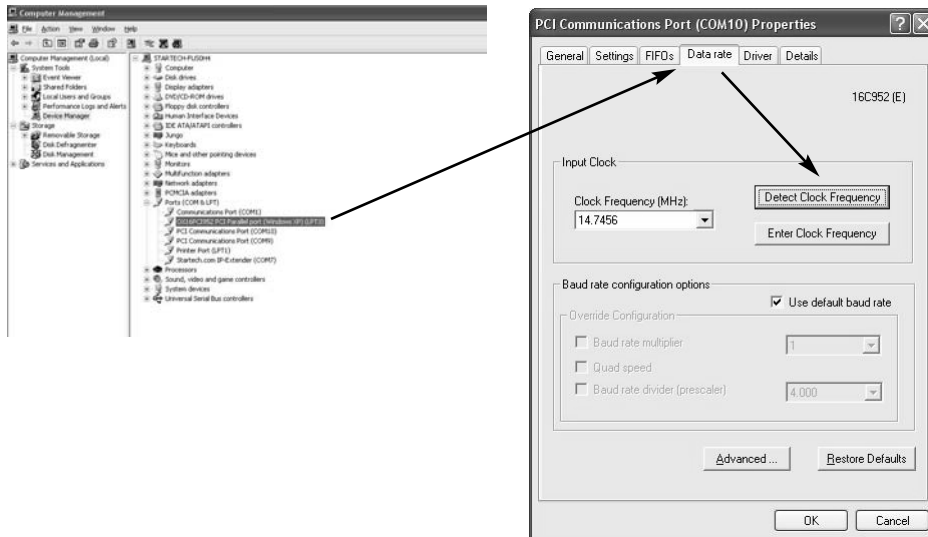
Please note that the following instructions detail installation of the software necessary for operation under Windows operating systems. Although the terms used will vary between OS versions, the steps taken will be similar if not identical.

1. Upon rebooting the computer for the first time following the installation of the card, Windows will detect the PCI Express card and prompt for driver installation, with the **Found New Hardware Wizard**. Please select Search for the best driver for my devices (Recommend) and click **Next**.
2. Insert the Drivers CD into your CDROM/DVDROM drive, and select **Install from a list or specific location (Advanced)**, enter **d:** in the text box provided, and click **Next**.
3. On the screens that follow, select **Next** and **Finish** respectively.
4. Remove the Driver CD, and when you are asked to reboot the computer, please do so for the installation to take effect.

Maximize data transfer rates

Once installation is complete, you will be able to configure the port(s) provided by the card, as you would any other serial port. To do so, click on **Start**, then right-click on **Manage** to open the Computer Management window.

1. In the left pane, click on **Device Manager**. Here, you should see two listings for **PCI Communications Port** as illustrated below.
2. Right-click on the first listing and select properties, to launch the PCI Communications Port Properties window.
3. Click on the **Data Rate** tab, and click on **Detect Clock Frequency** to automatically detect the port data transfer capability, then select **OK**.
4. Repeat steps 1-3 to configure the second added port.



Specifications

Certifications	FCC, CE, ROHS
Bus Type	PCI EXPRESS
Connectors	2 – DB9 MALE
Chipset	OX16PCI1952
OS Support	Windows NT4, 95 / 98 / ME / 2000 / XP/ Vista, Linux
Maximum Data Transfer Rate	460Kbps (Please see Maximize Data Transfer Rates)

Technical Support

StarTech.com's lifetime technical support is an integral part of our commitment to provide industry-leading solutions. If you ever need help with your product, visit www.startech.com/support and access our comprehensive selection of online tools, documentation, and downloads.

Warranty Information

This product is backed by a lifetime warranty. In addition, StarTech.com warrants its products against defects in materials and workmanship for the periods noted, following the initial date of purchase. During this period, the products may be returned for repair, or replacement with equivalent products at our discretion. The warranty covers parts and labor costs only. StarTech.com does not warrant its products from defects or damages arising from misuse, abuse, alteration, or normal wear and tear.

Limitation of Liability

In no event shall the liability of StarTech.com Ltd. and StarTech.com USA LLP (or their officers, directors, employees or agents) for any damages (whether direct or indirect, special, punitive, incidental, consequential, or otherwise), loss of profits, loss of business, or any pecuniary loss, arising out of or related to the use of the product exceed the actual price paid for the product. Some states do not allow the exclusion or limitation of incidental or consequential damages. If such laws apply, the limitations or exclusions contained in this statement may not apply to you.

About StarTech.com

StarTech.com is “The Professionals’ Source for Hard-to-Find Computer Parts”. Since 1985, we have been providing IT professionals with the quality products they need to complete their solutions. We offer an unmatched selection of computer parts, cables, server management solutions and A/V products and serve a worldwide market through our locations in the United States, Canada, the United Kingdom and Taiwan.

Visit www.startech.com for complete information about all our products and to access exclusive interactive tools such as the Parts Finder and the KVM Reference Guide. StarTech.com makes it easy to complete almost any IT solution. Find out for yourself why our products lead the industry in performance, support, and value.