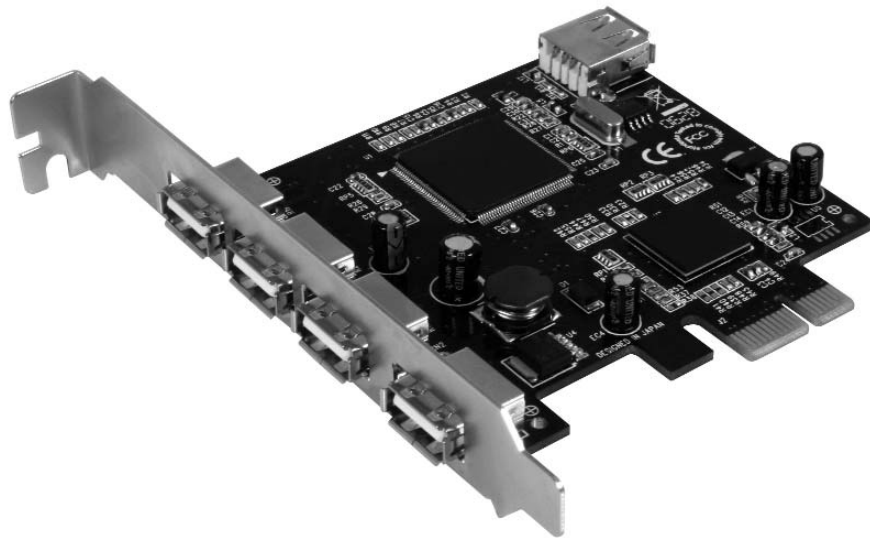


# PCI Express USB Card

PCI Express 4 Port USB 2.0 card

**PEX400USB2**

**Instruction Manual**



Actual product may vary from photo

**StarTech.com**

The Professionals' Source for Hard-to-Find Computer Parts

## **FCC Compliance Statement**

This equipment has been tested and found to comply with the limits for a Class B digital device, pursuant to part 15 of the FCC Rules. These limits are designed to provide reasonable protection against harmful interference in a residential installation. This equipment generates, uses and can radiate radio frequency energy and, if not installed and used in accordance with the instructions, may cause harmful interference to radio communications. However, there is no guarantee that interference will not occur in a particular installation. If this equipment does cause harmful interference to radio or television reception, which can be determined by turning the equipment off and on, the user is encouraged to try to correct the interference by one or more of the following measures:

- Reorient or relocate the receiving antenna.
- Increase the separation between the equipment and receiver.
- Connect the equipment into an outlet on a circuit different from that to which the receiver is connected.
- Consult the dealer or an experienced radio/TV technician for help.

## **Use of Trademarks, Registered Trademarks, and other Protected Names and Symbols**

This manual may make reference to trademarks, registered trademarks, and other protected names and/or symbols of third-party companies not related in any way to StarTech.com. Where they occur these references are for illustrative purposes only and do not represent an endorsement of a product or service by StarTech.com, or an endorsement of the product(s) to which this manual applies by the third-party company in question. Regardless of any direct acknowledgement elsewhere in the body of this document, StarTech.com hereby acknowledges that all trademarks, registered trademarks, service marks, and other protected names and/or symbols contained in this manual and related documents are the property of their respective holders.

# Table of Contents

**Introduction** .....1

**Features** .....1

**Before you begin** .....1

**Installation** .....2

**Troubleshooting** .....4

**Specifications** .....5

**Technical Support** .....6

**Warranty Information** .....6

## **Introduction**

Thank you for purchasing a StarTech.com PCI Express USB 2.0 card - the perfect solution for adding 4 USB 2.0 ports to your computer, harnessing the speed and power of PCI Express. Featuring data transfer speeds of up to 480Mbps, as well as Plug & Play and hot swap features, you'll be able to quickly install your USB devices without even having to shut down the computer.

## **Features**

- Fully compliant with one-lane 2.5 GB/s PCI Express Specification
- Compliant with USB 2.0 specification and USB 2.0 data transfer rate up 480Mb/s
- Supports PCI slots with different lane widths (x1, x2, x3, x4, x8, x16)
- Supports Windows 98, 2000, XP, 2003, Linux, and MAC OS

## **Before You Begin**

### **System Requirements**

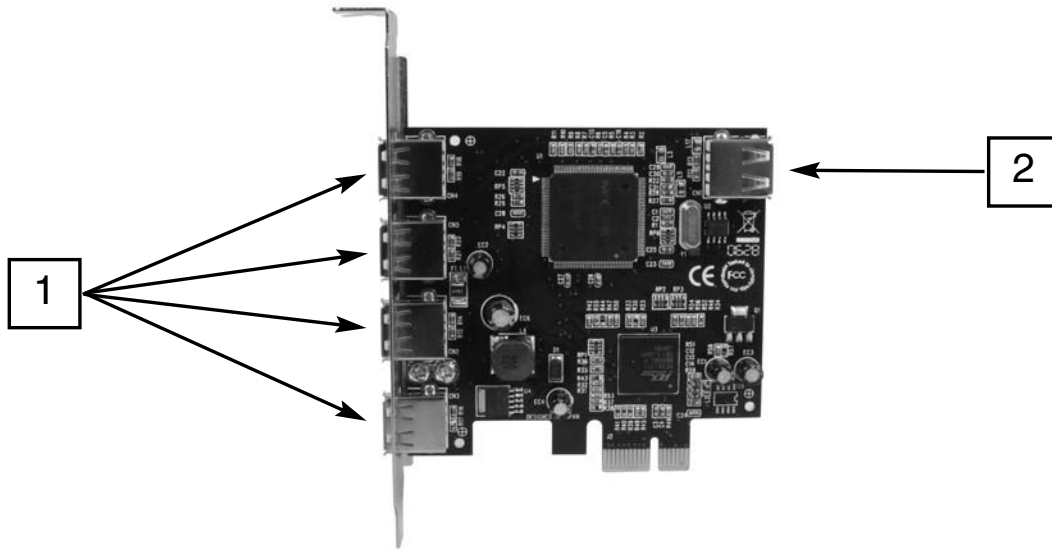
- Pentium-class computer with one available x1, x4, x8 or x16 PCI Express slot
- Microsoft Windows 2000, XP or Server 2003 operating system

### **Contents**

This package should contain:

- PCI Express USB 2.0 card (1)
- Driver CD ROM (1)
- Instruction Manual (1)

## Installation



1 - USB2.0 High-Speed External ports (4)

2 - USB2.0 High-Speed Internal port (1)

### Installing the PCI Express serial card

1. Shut down all power connected to the computer, as well as all devices connected to the computer peripherally (i.e. Printers, Monitors, Scanners etc.). As an added step to ensure safe installation, unplug the power supply from the computer.
2. Remove the computer cover. For more detailed instruction on how to perform this step, please refer to the documentation that was included with your computer at the time of purchase.
3. Locate an empty PCI Express slot, removing the metal bracket covering the accompanying empty port/socket.
4. Position the USB card above the open PCI Express slot, ensuring that the card is properly aligned with the slot. Insert the card firmly into the slot, distributing force evenly across the length of the board. Once inserted, secure the card into the adjoining socket (previously covered by metal bracket), using the correct size screw (if necessary, please consult documentation that accompanied purchase of computer).
5. Replace the computer cover and re-connect all power to the computer.

### Driver installation

Once the computer is fully booted, following the physical installation of the card, Windows

will install the necessary support files in order for the added USB 2.0 ports to function. To maximize the performance of the card, please install the software from the PCI Express USB 2.0 card Driver CD:

1. Insert the Driver CD into your CD/DVD-ROM drive.

2. Browse to, and execute the Setup.exe file:

**D:\USB\USB2.0-NEC\Windows\Setup.exe**,  
(D:\ designates your CD/DVD-ROM drive)



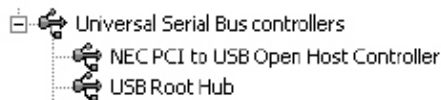
3. The driver will install automatically. To ensure optimal functionality, please do not break off the installation, once it is in progress. Please note that unplugging a USB device without first stopping operation can cause the computer to crash, risking any unsaved data. Please ensure that any USB devices are not operating when detached from the computer. One way to ensure that the device(s) are safely unplugged would be to locate the following icon on the taskbar (if available):

Please click on the icon to launch the hardware removal wizard.



### Verifying installation

Once the PCI Express card has been installed, browse to the **Device Manager (Start > Control Panel > System > Device Manager)** to verify that the hardware has been successfully installed. Once the **Device Manager** has loaded, please click on the **(+)** symbol located next to Universal Serial Bus controllers, which will look like the following, if correctly installed:



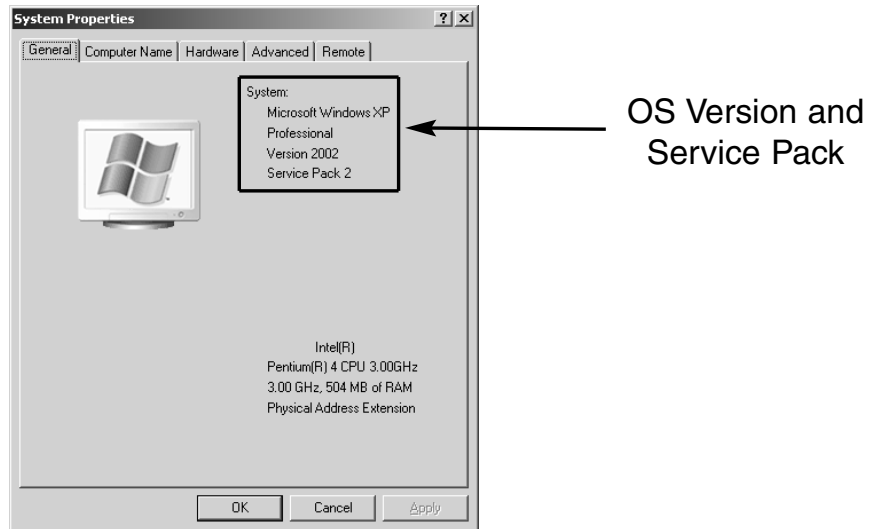
Following this, your card will be ready for use.

## Troubleshooting

### I cannot install the USB 2.0 PCI Express card driver properly

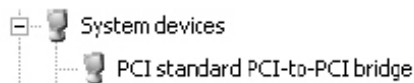
Often times, this problem is caused by an operating system that has not yet been updated to recent standards (i.e. Windows XP will require the most recent Service Packs):

Right-click on **My Computer** and select **Properties** to check your operating system service pack version, as illustrated below:



### The computer cannot detect the USB2.0 PCI Express card

1. Ensure that the PCI Express card is correctly plugged into the PCI Express slot. If it is not, please reset the card.
2. If the PCI Express card is plugged in correctly, remove the card and verify that the gold conduits which are in contact with the PCI Express slot are clean. If not, please clean the connector surface.
3. Please enter the **Device Manager** to verify that **PCI standard PCI to PCI bridge** appears beneath **System Device** as shown here:



If you cannot find this information in the device manager, please upgrade your motherboard BIOS to the latest version.

## Specifications

<b>Interface</b>	Single-Lane (x1) PCI Express
<b>Mode</b>	USB2.0
<b>Controller</b>	XIO2000 & NECUPD720101
<b>Port</b>	Four external and One internal USB2.0 ports
<b>Speed: Data Transfer rate</b>	1.5, 12, and 480 Mbps
<b>O.S. support</b>	Windows2000/XP/2003/, Linux 2.4x, 2.6x, and MAC OS X
<b>Operation temperature</b>	0°~57°C
<b>Storage temperature</b>	20°C~85°C
<b>Operation humidity</b>	5°C~95% RH

## **Technical Support**

StarTech.com's lifetime technical support is an integral part of our commitment to provide industry-leading solutions. If you ever need help with your product, visit [www.startech.com/support](http://www.startech.com/support) and access our comprehensive selection of online tools, documentation, and downloads.

## **Warranty Information**

This product is backed by a lifetime warranty. In addition, StarTech.com warrants its products against defects in materials and workmanship for the periods noted, following the initial date of purchase. During this period, the products may be returned for repair, or replacement with equivalent products at our discretion. The warranty covers parts and labor costs only. StarTech.com does not warrant its products from defects or damages arising from misuse, abuse, alteration, or normal wear and tear.

## **Limitation of Liability**

In no event shall the liability of StarTech.com Ltd. and StarTech.com USA LLP (or their officers, directors, employees or agents) for any damages (whether direct or indirect, special, punitive, incidental, consequential, or otherwise), loss of profits, loss of business, or any pecuniary loss, arising out of or related to the use of the product exceed the actual price paid for the product.

Some states do not allow the exclusion or limitation of incidental or consequential damages. If such laws apply, the limitations or exclusions contained in this statement may not apply to you.

## **About StarTech.com**

StarTech.com is “The Professionals’ Source for Hard-to-Find Computer Parts”. Since 1985, we have been providing IT professionals with the quality products they need to complete their solutions. We offer an unmatched selection of computer parts, cables, server management solutions and A/V products and serve a worldwide market through our locations in the United States, Canada, the United Kingdom and Taiwan.

Visit [www.startech.com](http://www.startech.com) for complete information about all our products and to access exclusive interactive tools such as the Parts Finder and the KVM Reference Guide. StarTech.com makes it easy to complete almost any IT solution. Find out for yourself why our products lead the industry in performance, support, and value.