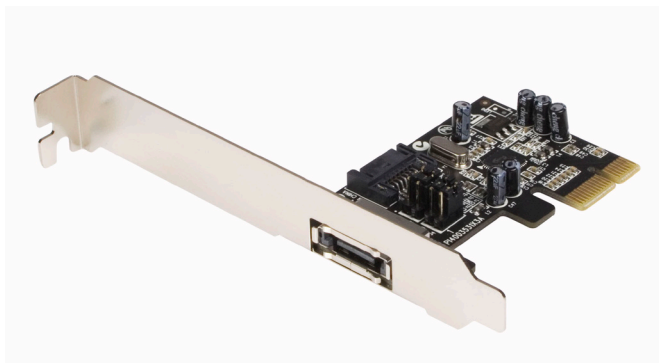


SATA PCI Express Adapter

PEXESATA1



FCC Compliance Statement

This equipment has been tested and found to comply with the limits for a Class B digital device, pursuant to part 15 of the FCC Rules. These limits are designed to provide reasonable protection against harmful interference in a residential installation. This equipment generates, uses and can radiate radio frequency energy and, if not installed and used in accordance with the instructions, may cause harmful interference to radio communications. However, there is no guarantee that interference will not occur in a particular installation. If this equipment does cause harmful interference to radio or television reception, which can be determined by turning the equipment off and on, the user is encouraged to try to correct the interference by one or more of the following measures:

- Reorient or relocate the receiving antenna.
- Increase the separation between the equipment and receiver.
- Connect the equipment into an outlet on a circuit different from that to which the receiver is connected.
- Consult the dealer or an experienced radio/TV technician for help.

Use of Trademarks, Registered Trademarks, and other Protected Names and Symbols

This manual may make reference to trademarks, registered trademarks, and other protected names and/or symbols of third-party companies not related in any way to StarTech.com. Where they occur these references are for illustrative purposes only and do not represent an endorsement of a product or service by StarTech.com, or an endorsement of the product(s) to which this manual applies by the third-party company in question. Regardless of any direct acknowledgement elsewhere in the body of this document, StarTech.com hereby acknowledges that all trademarks, registered trademarks, service marks, and other protected names and/or symbols contained in this manual and related documents are the property of their respective holders.

Table of Contents

Introduction	1
Package contents	1
System Requirements	1
Hardware Guide	2
Installation.....	3
Driver Installation - Windows® XP/Server 2003	4
Driver Installation - Windows® 2000.....	5
Windows 2000/XP/2003 Server Fresh Installation	6
Windows Vista™ Fresh Installation	8
Installation Without a Floppy Drive	9
Specifications	11

Introduction

Thank you for purchasing a StarTech.com SATA II PCI Express Adapter. This innovative card allows you to turn an available PCI Express (1x) slot into an internal or external SATA (eSATA) connection with support for full SATA data transfer rates of up to 3Gbps - an ideal solution if you need an extra SATA port or want to externalize your storage.

Features

- Provides one external (eSATA) or one internal SATA II connection
- Compatible with PCI Express 1-lane (x1, x2, x4, x8, x16)
- Standard and low profile brackets included
- Supports Native Command Queuing (NCQ)
- Supports SATA II transfer rates of up to 3.0 Gbps

Package contents

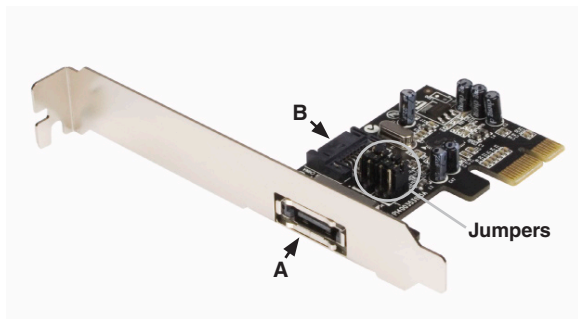
This package should contain:

- 1 x PCI-Express eSATA Card
- 1 x Low Profile Bracket
- 1 x Driver CD
- 1 x Instruction Manual

System Requirements

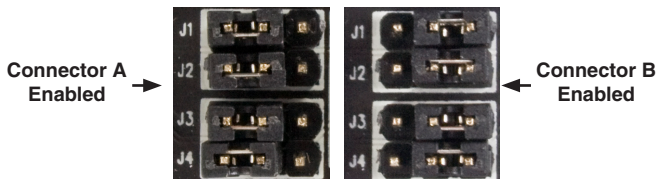
- Windows® 2000/XP/Server 2003/Vista™
- A PCI Express enabled system with an available PCI Express port

Hardware Guide



Jumper Settings		
JP	Action	Setting
J1-J4	Enable SATA Connector A	Set J1-J4 jumpers to pins 1 and 2
	Enable SATA Connector B	Set J1-J4 jumpers to pins 2 and 3

There are two SATA ports available on PEXESATA1 - referred to in the above picture as A and B. Port A is an external SATA (eSATA) port and B is an internal SATA port; **Please note** that only one of them will work at a time. Using the jumper settings provided above, please designate which port is to be used. By default, Port 2 (internal) is set to active.



Installation



WARNING! PCI Express cards, like all computer equipment, can be severely damaged by static electricity. Be sure that you are properly grounded before opening your computer case or touching your card. StarTech.com recommends that you wear an anti-static strap when installing any computer component. If an anti-static strap is unavailable, discharge yourself of any static electricity build-up by touching a large grounded metal surface (such as the computer case) for several seconds. Also be careful to handle the card by its edges and not the gold connectors.

Please note: If you are performing a new operating system installation and wish to boot from the drive that will be connected to PEXESATA1, please copy the following files from the included Driver CD to a blank floppy disk that can be used during OS installation:

si3531.cat

si3531.inf

si3531.sys

SilSupp.cpl

sippd.inf

SiRemFil.sys

SiWinAcc.sys

txtsetup.oem

For further instruction on how to install the card and necessary drivers for use with a fresh (boot) OS drive, please skip to the section entitled **Windows 2000/XP/2003 Server Fresh Installation** or **Windows Vista Fresh Installation** as applicable. Otherwise, if you will be installing PEXESATA1 to connect a secondary (non-boot) drive, proceed as follows:

1. Shut down all power connected to the computer, as well as all devices connected to the computer peripherally (i.e. Printers, Monitors, Scanners etc.). As an added step to ensure safe

installation, unplug the power supply from the computer.

2. Remove the computer cover, allowing access to the motherboard and available slots. For more detailed instruction on how to perform this step, please refer to the documentation that was included with your computer at the time of purchase.
3. Locate an empty PCI Express slot, removing the metal bracket covering the accompanying empty port/socket on the rear panel of the computer chassis.
4. Position the card above the open PCI Express slot, ensuring that the card is properly aligned with the slot. Insert the card firmly into the slot, distributing force evenly across the length of the board.

Once inserted, secure the card into the adjoining socket (previously covered by a metal bracket, on the rear panel of the computer chassis), using the correct size screw (if necessary, please consult documentation that accompanied purchase of computer).

5. Connect the desired SATA drive to either the internal SATA port, or the external SATA (eSATA) port (as determined by the jumper settings - see **Hardware Guide** for further details) and replace the chassis/case covering.

Driver Installation - Windows® XP/Server 2003

1. Following hardware installation, power up the computer. The **Found New Hardware Wizard** will appear.

If you are using **Windows XP (with Service Pack 1 or earlier)** or **Windows Server 2003 (with Service Pack 1 or earlier)**, continue to step 2.

If you are using **Windows XP (with Service Pack 2 or later)** or **Windows Server 2003 (with Service Pack 2 or later)** please select **No, not this time**, then click on **Next**.

2. Please insert the driver CD into your CD/DVD-ROM Drive, and select **Install the software automatically(Recommended)**, then click **Next**.

3. Accept the default entry, then click **Next**.
4. Click **Finish** to conclude software installation.
5. Repeat steps 1-4 a second time, then click on **Yes** to restart the computer.

Driver Installation - Windows® 2000

1. At the Found New Hardware Wizard, click **Next**.
2. Select **Search for a suitable driver for my device(recommended)** then click **Next**.
3. Insert the driver CD into your CD-ROM Drive, ensure that only **CD-ROM drives** is selected, then click **Next**, then click **Next** again.
4. Click **Next**, then **Finish**.
5. Repeat steps 1-4 for the remaining SATA port.
6. Click **Yes** to restart, to complete the installation.

Driver Installation - Windows® Vista™

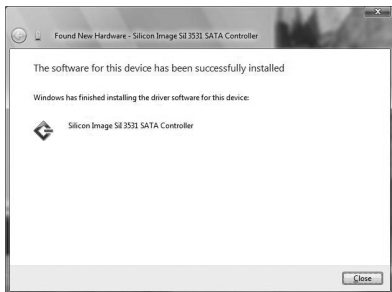
1. After powering the computer following physical installation, a window will appear indicating that new hardware has been found. Please click on **Locate and Install Driver Software (recommended)**
2. You will then be asked to Insert the disc that came with your Mass



Storage Controller. As such, please insert the Driver CD (included), then click on **Next** to continue.

3. Windows will then locate and install the necessary driver files. Once

complete, a screen will appear indicating that The software for this device has been successfully installed. Click on Close to complete the installation:



Windows 2000/XP/2003 Server Fresh Installation

Follow the instructions in this section if you are performing a new installation of Windows 2000/XP/2003, and you wish to boot from the drive that will be attached to PEXESATA1.

Note: Ensure you've created the necessary boot disk (as outlined on page 3) prior to installation, as it will be required in order to properly conduct the OS installation.

1. Shut down all power connected to the computer, as well as all devices connected to the computer peripherally (i.e. Printers, Monitors, Scanners etc.). As an added step to ensure safe installation, unplug the power supply from the computer.
2. Remove the computer cover, allowing access to the motherboard and available slots. For more detailed instruction on how to perform this step, please refer to the documentation that was included with your computer at the time of purchase.
3. Locate an empty PCI Express slot, removing the metal bracket covering the accompanying empty port/socket on the rear panel of the computer chassis.
4. Position the card above the open PCI Express slot, ensuring that the card is properly aligned with the slot. Insert the card firmly into

the slot, distributing force evenly across the length of the board.

Once inserted, secure the card into the adjoining socket (previously covered by metal bracket, on the rear panel of the computer chassis), using the correct size screw (if necessary, please consult documentation that accompanied purchase of computer).

5. If a floppy drive is available on the host system, attach PEXESATA1 to the Serial ATA drive(s), using a SATA (data) cable. Similarly, connect the drive to an available power connector as provided by the computer power supply. If no floppy drive is available, please skip to the section entitled **Installation Without a Floppy Drive**.
6. Replace the computer cover and re-connect all power to the computer.
7. Turn on the computer. Upon first boot, Windows will instruct you to Press [**F6**] for third party SCSI or driver installation. As such, please hit **F6** to continue.
8. Press [**S**] when setup asks if you want to specify an additional device, and insert the boot diskette into your floppy drive, then press **[Enter]**

Select the **Sil 3531** driver, then press **[Enter]**.

Press **[Enter]** again to finish driver installation, then follow the on-screen instructions to complete the Windows installation.

Please note: If a Security Alert warning pops up, click Yes to proceed. Follow the setup instructions to select your choice for partition and file system. After setup examines your disks, it will copy files from the CD to the hard drive selected above, and restart the system. After restart, the setup process will resume installing the new drive(s).

Windows Vista™ Fresh Installation

Follow the instructions in this section if you are performing a new (bootable) installation of Windows Vista™ on a drive attached to PEXESATA1:

1. Shut down all power connected to the computer, as well as all devices connected to the computer peripherally (i.e. Printers, Monitors, Scanners etc.). As an added step to ensure safe installation, unplug the power supply from the computer.
2. Remove the computer cover, allowing access to the motherboard and available slots. For more detailed instruction on how to perform this step, please refer to the documentation that was included with your computer at the time of purchase.
3. Locate an empty PCI Express slot, removing the metal bracket covering the accompanying empty port/socket on the rear panel of the computer chassis.
4. Position the card above the open PCI Express slot, ensuring that the card is properly aligned with the slot. Insert the card firmly into the slot, distributing force evenly across the length of the board.

Once inserted, secure the card into the adjoining socket (previously covered by metal bracket, on the rear panel of the computer chassis), using the correct size screw (if necessary, please consult documentation that accompanied purchase of computer).

5. Attach PEXESATA1 to the Serial ATA drive (internal or external, depending on jumper settings - see **Hardware Guide** for further details), using a SATA (data) cable. Similarly, attach an available SATA power connector (provided by computer power supply) to the drive.
6. Replace the computer cover and re-connect all power to the computer.
7. Start the computer as you normally would to perform an operating system installation, ensuring that the Windows Vista™ installation CD/DVD is present in the drive, and the BIOS has been suitably adjusted to boot from the CD/DVD Drive.
8. When the Windows Install screen appears, fill in the necessary

information and click **Next**. Follow the operating system instructions until a page appears asking “**Where do you want to install Windows?**”. From here, click on **Load Driver**.

9. You will then be asked to provide the necessary driver files. The files can be accessed by CD, DVD, or USB Flash Drive. As such, connect the drivers to the computer using one of these methods, and click **Browse** to specify the location of the files. Then, click **Next**.
10. Windows Vista™ will then install the necessary files, after which the drive connected to PEXESATA1 will be recognized as a usable drive onto which the OS can be installed.
11. Select the drive on which you wish to install the operating system, and click **Next**, to resume normal operating system installation

Installation Without a Floppy Drive

In the absence of an available floppy drive for driver installation, once PEXESATA1 has been installed within the computer, install the desired hard drive using an existing SATA controller, as provided by the motherboard. Then:

1. Power on the computer, and boot from the operating system Boot CD, following Microsoft's Windows installation procedure to complete the operating system installation.
2. Once the operating system has been installed on the drive, follow the PEXESATA1 installation steps outlined for the appropriate operating system. (see pages 3-5)
3. From the Device Manager, verify that the RAID controller has successfully been installed. (For more information, please refer to **Verifying Successful Installation** on the following page).
4. Once you have established that the driver installation was successful, power down the computer, connect the hard disk onto which the operating system has been installed to PEXESATA1, and power up the computer. The computer can now be configured to boot from the drive connected to PEXESATA1.

Verifying Successful Driver Installation

Once the computer has been powered on following the connection of the desired drive and the subsequent driver installation, you may wish to verify that the necessary files have been installed properly. To do so:

1. Right-click on **My Computer** and select **Manage**.
2. In the left pane of the Computer Management window, select **Device Manager**.
3. In the right pane of the Computer Management window, click on **SCSI and RAID Controllers (Storage Controllers - Vista)**. Here, you should find listed **Silicon Image Sil 3531 SATA Controller**, upon successful installation.

Specifications

Chipset	Sil 3531
Connectors	External: 1x eSATA plug Internal: 1x SATA plug
Maximum Data Transfer Rate	3Gbps
Operating System Support	Windows 2000/XP/Vista™
Certifications	CE, RoHS, WEEE
Dimensions (L x W x H)	102 mm (4.02 in) x 120 mm (4.72") x 20 mm (0.79 in)
Product Weight	44.2 g (1.56 oz)

Technical Support

StarTech.com's lifetime technical support is an integral part of our commitment to provide industry-leading solutions. If you ever need help with your product, visit www.startech.com/support and access our comprehensive selection of online tools, documentation, and downloads.

Warranty Information

This product is backed by a lifetime warranty. In addition, StarTech.com warrants its products against defects in materials and workmanship for the periods noted, following the initial date of purchase. During this period, the products may be returned for repair, or replacement with equivalent products at our discretion. The warranty covers parts and labor costs only. StarTech.com does not warrant its products from defects or damages arising from misuse, abuse, alteration, or normal wear and tear.

Limitation of Liability

In no event shall the liability of StarTech.com Ltd. and StarTech.com USA LLP (or their officers, directors, employees or agents) for any damages (whether direct or indirect, special, punitive, incidental, consequential, or otherwise), loss of profits, loss of business, or any pecuniary loss, arising out of or related to the use of the product exceed the actual price paid for the product. Some states do not allow the exclusion or limitation of incidental or consequential damages. If such laws apply, the limitations or exclusions contained in this statement may not apply to you.



StarTech.com has been making “hard-to-find easy” since 1985, providing high quality solutions to a diverse IT and A/V customer base that spans many channels, including government, education and industrial facilities to name just a few. We offer an unmatched selection of computer parts, cables, A/V products, KVM and Server Management solutions, serving a worldwide market through our locations in the United States, Canada, the United Kingdom and Taiwan.

Visit www.startech.com today for complete information about all our products and to access exclusive interactive tools such as the Cable Finder, Parts Finder and the KVM Reference Guide. StarTech.com makes it easy to complete almost any IT or A/V solution. Find out for yourself why our products lead the industry in performance, support, and value.