

SAT2510SCB

Instruction Manual

SATA Hard Drive Enclosure

**2.5" Silver USB 2.0 SATA
External Hard Drive Enclosure
with Integrated Cable**

INFO SAFE

StarTech.com 
Making hard-to-find easy!®

FCC Compliance Statement

This equipment has been tested and found to comply with the limits for a Class B digital device, pursuant to part 15 of the FCC Rules. These limits are designed to provide reasonable protection against harmful interference in a residential installation. This equipment generates, uses and can radiate radio frequency energy and, if not installed and used in accordance with the instructions, may cause harmful interference to radio communications. However, there is no guarantee that interference will not occur in a particular installation. If this equipment does cause harmful interference to radio or television reception, which can be determined by turning the equipment off and on, the user is encouraged to try to correct the interference by one or more of the following measures:

- Reorient or relocate the receiving antenna.
- Increase the separation between the equipment and receiver.
- Connect the equipment into an outlet on a circuit different from that to which the receiver is connected.
- Consult the dealer or an experienced radio/TV technician for help.

Use of Trademarks, Registered Trademarks, and other Protected Names and Symbols

This manual may make reference to trademarks, registered trademarks, and other protected names and/or symbols of third-party companies not related in any way to StarTech.com. Where they occur these references are for illustrative purposes only and do not represent an endorsement of a product or service by StarTech.com, or an endorsement of the product(s) to which this manual applies by the third-party company in question. Regardless of any direct acknowledgement elsewhere in the body of this document, StarTech.com hereby acknowledges that all trademarks, registered trademarks, service marks, and other protected names and/or symbols contained in this manual and related documents are the property of their respective holders.

Table of Contents

Introduction	1
Packaging Contents.....	1
System Requirements	1
Installation	2
Hardware Installation.....	2
Driver Installation.....	3
Using the Enclosure	3
Specifications	5
Technical Support	6
Warranty Information	6

Introduction

The SAT2510SCB SATA External HDD Enclosure transforms any internal 2.5" SATA hard drive into a portable USB external hard drive. Designed for convenience and portability, this hard drive enclosure features a built-in USB 2.0 cable and a durable, yet lightweight aluminum construction that fits perfectly in your pocket or laptop bag.

Packaging Contents

- 1 x SAT2510SCB hard drive enclosure
- 1 x USB "Y" extension cable
- 1 x Package of screws
- 1 x User Manual

System Requirements

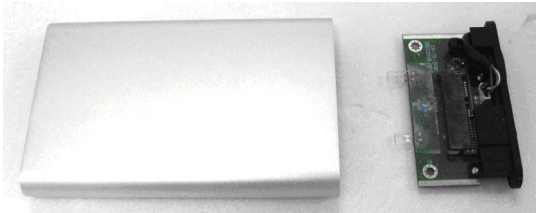
- USB enabled computer system
- Microsoft Windows® 2000/XP/Vista/7, Mac OS® 9.2/10.x, or Linux/Unix



Installation

Hardware Installation

1. Remove the rear panel by pulling it out of the metal enclosure.



2. Attach the hard drive to the rear panel by simply sliding the hard drive on the 7+15 SATA connector on the rear panel.



3. From the bottom attach 2 screws to secure the hard drive to the rear panel.
4. Slide the hard drive with rear panel into the metal enclosure.



5. Attach two screws. You can now attach the enclosure to a computer system via the integrated USB cable.



NOTE: A DC power connector for an external power adapter is located under the built-in USB cable. This would be necessary for any hard drives that cannot draw enough power from the USB port alone.

Driver Installation

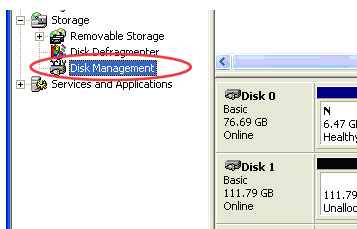
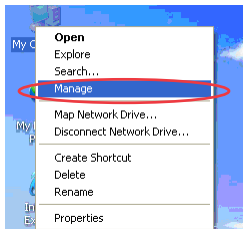
Windows 2000/XP/Vista/7, Mac OS 9.2/10.x, or Linux/Unix

No driver installation is required for these operating systems, as this enclosure is natively supported, so the drivers are already installed.

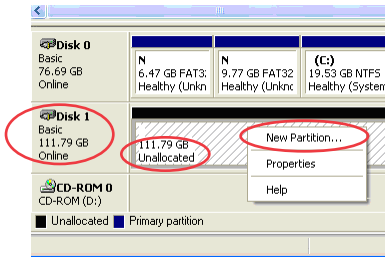
Using the Enclosure

Windows 2000/XP/Vista/7

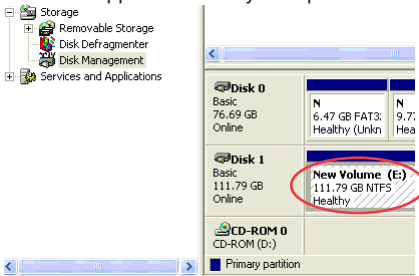
If you are using a brand new hard drive that does not contain any data, then you will first need to prepare the hard drive for use. From the main desktop, right-click on “My Computer” (“Computer” in Vista), then select Manage. In the new Computer Management window, select Disk Management from the left window panel.



Locate the Disk that says it is “Unallocated” (check hard drive capacity to confirm it’s the correct hard drive) and then right-click in the section that says “Unallocated” and select “New Partition”.



The New Partition Wizard will appear. Follow the instructions in the wizard to complete setting up the drive. Once complete, the Disk should show up as “Healthy” with a drive letter assigned (ie. E:). This drive letter should now appear within My Computer.



If you are installing a hard drive that already has data on it, then after plugging it in, the drive should automatically show up with a drive letter assigned within My Computer.

Specifications

Bus Interface	USB 2.0
Connectors	USB type A
LEDs	Power, Activity
Chipset	Sunplus SPIF301
Cable Length	5cm (2in)
Hard Drive Support	2.5" SATA 1.5/3.0Gbps, 9.5mm height
Power Adapter (optional)	5VDC, 2A, center positive, 3.5mm tip
Dimensions	131.0mm x 84.0mm x 16.0mm
Weight	145g
Compatible Operating Systems	Windows 2000/XP/Vista/7, Mac OS 9.2/10.x, Linux/Unix

Technical Support

StarTech.com's lifetime technical support is an integral part of our commitment to provide industry-leading solutions. If you ever need help with your product, visit www.startech.com/support and access our comprehensive selection of online tools, documentation, and downloads.

Warranty Information

This product is backed by a one year warranty.

In addition, StarTech.com warrants its products against defects in materials and workmanship for the periods noted, following the initial date of purchase. During this period, the products may be returned for repair, or replacement with equivalent products at our discretion. The warranty covers parts and labor costs only. StarTech.com does not warrant its products from defects or damages arising from misuse, abuse, alteration, or normal wear and tear.

Limitation of Liability

In no event shall the liability of StarTech.com Ltd. and StarTech.com USA LLP (or their officers, directors, employees or agents) for any damages (whether direct or indirect, special, punitive, incidental, consequential, or otherwise), loss of profits, loss of business, or any pecuniary loss, arising out of or related to the use of the product exceed the actual price paid for the product. Some states do not allow the exclusion or limitation of incidental or consequential damages. If such laws apply, the limitations or exclusions contained in this statement may not apply to you.



StarTech.com has been making “hard-to-find easy” since 1985, providing high quality solutions to a diverse IT and A/V customer base that spans many channels, including government, education and industrial facilities to name just a few. We offer an unmatched selection of computer parts, cables, A/V products, KVM and Server Management solutions, serving a worldwide market through our locations in the United States, Canada, the United Kingdom and Taiwan.

Visit **www.startech.com** today for complete information about all our products and to access exclusive interactive tools such as the Cable Finder, Parts Finder and the KVM Reference Guide.