

eSATA/USB SATA Drive Enclosure

2.5" eSATA/USB 2.0 SATA Drive Enclosure

SAT2510U2E

Instruction Manual



Actual product may vary from photo

INFO SAFE

StarTech.com
Making hard-to-find easy!

FCC Compliance Statement

This equipment has been tested and found to comply with the limits for a Class B digital device, pursuant to part 15 of the FCC Rules. These limits are designed to provide reasonable protection against harmful interference in a residential installation. This equipment generates, uses and can radiate radio frequency energy and, if not installed and used in accordance with the instructions, may cause harmful interference to radio communications. However, there is no guarantee that interference will not occur in a particular installation. If this equipment does cause harmful interference to radio or television reception, which can be determined by turning the equipment off and on, the user is encouraged to try to correct the interference by one or more of the following measures:

- Reorient or relocate the receiving antenna.
- Increase the separation between the equipment and receiver.
- Connect the equipment into an outlet on a circuit different from that to which the receiver is connected.
- Consult the dealer or an experienced radio/TV technician for help.

Use of Trademarks, Registered Trademarks, and other Protected Names and Symbols

This manual may make reference to trademarks, registered trademarks, and other protected names and/or symbols of third-party companies not related in any way to StarTech.com. Where they occur these references are for illustrative purposes only and do not represent an endorsement of a product or service by StarTech.com, or an endorsement of the product(s) to which this manual applies by the third-party company in question. Regardless of any direct acknowledgement elsewhere in the body of this document, StarTech.com hereby acknowledges that all trademarks, registered trademarks, service marks, and other protected names and/or symbols contained in this manual and related documents are the property of their respective holders.

Table of Contents

Introduction	1
Features	1
System Requirements	1
Package Contents	1
Hardware Guide	2
Installation	2
Connecting to a Host Computer	4
Verifying Installation and Drive Partitions	4
Specifications	6
Technical Support	6
Warranty Information	6

Introduction

Thank you for purchasing a StarTech.com 2.5" eSATA/USB 2.0 SATA Drive Enclosure. This versatile enclosure can be connected to a host computer using either eSATA or USB 2.0, and is natively supported by modern operating systems eliminating the need to install drivers or third party software. Plus, with a sleek, yet sturdy design, SAT2510U2E can be a perfect notebook accessory, providing added storage for a flawless user experience.

Features

- Portable, lightweight design
- Includes protective carrying pouch
- Sturdy yet attractive construction

System Requirements:

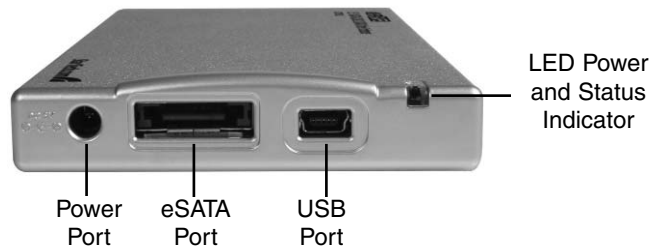
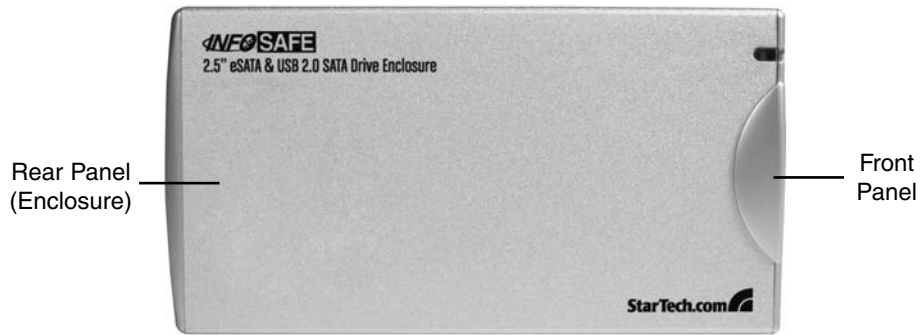
- Compatible with Windows ME, 2000, XP and Vista, as well as Mac OS 10 and up
- A 2.5" SATA I/II hard drive (use SATA II for improved data transfer speeds)

Package Contents:

This package should contain:

- 2.5" SATA Enclosure
- USB Cable
- USB to DC Cable
- User Manual
- Travel Pouch
- Screws
- Screw Driver

Hardware Guide



Installation

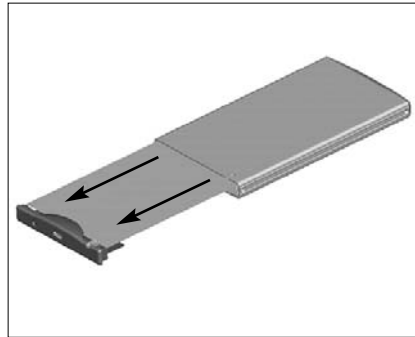


WARNING: Hard drives require careful handling, especially when being transported. If you are not careful with your hard disk, lost data may result. Always handle your hard drive and storage device with caution.

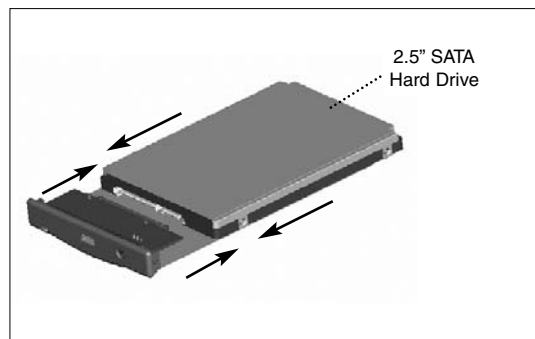


WARNING: Hard drives, like all computer equipment can also be severely damaged by static electricity. Be sure that you are properly grounded before opening your computer case or touching any components. StarTech.com recommends that you wear an anti-static strap when installing any computer equipment. If an antistatic strap is unavailable, discharge yourself of any static electricity build-up by touching a large grounded metal surface (such as the computer case) for several seconds.

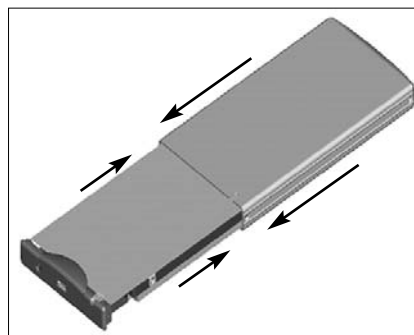
1. Remove the screws from the enclosure, and remove the rear panel cover. Pull the front panel out of the enclosure:



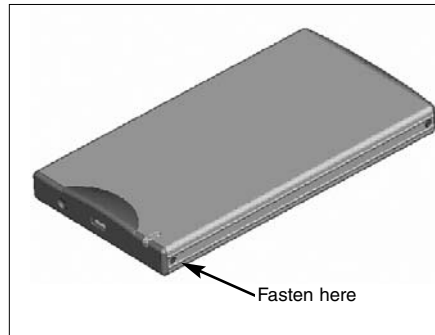
2. Attach the 2.5" SATA hard drive to the connector provided:



3. Insert the front panel (with drive attached) into the rear panel (enclosure).



4. Fasten the front panel (with drive attached) to the rear panel (enclosure), using the screws removed in step #1.



Connecting to a Host Computer

To connect SAT2510U2E to a host computer **using USB**, simply insert the included USB cable into the USB type Mini B slot provided by the enclosure, and the remaining end into an available USB type A slot on the host computer.

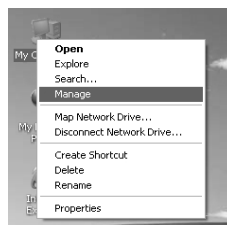
To connect SAT2510U2E to a host computer **using eSATA**, connect the enclosure to the host computer, using a standard eSATA cable. To provide power to the enclosure, connect the **USB to DC cable** (provided) to an available USB port on the host computer, and insert the remaining end into the power port located on the front panel of SAT2510U2E.

Once the enclosure has been connected to the host computer, the operating system will automatically update the necessary driver files. Once this has been completed, the newly connected drive should appear as an added hard drive, in **My Computer**.

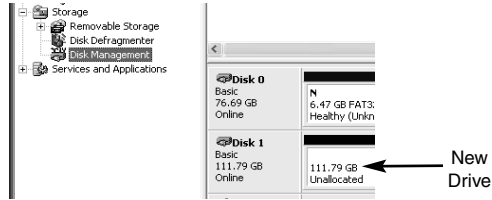
Verifying Installation and Drive Partitions

To ensure that the drive is properly detected by the operating system (for Windows users):

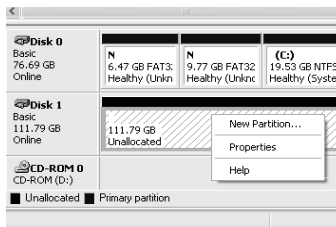
1. Right-click on **My Computer**, and select **Manage**:



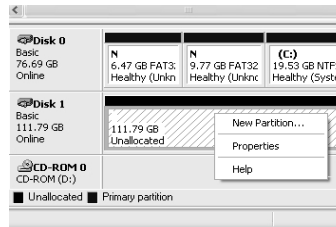
2. Select **Disk Management**, in the left pane. In the right pane, you should notice the new hard drive:



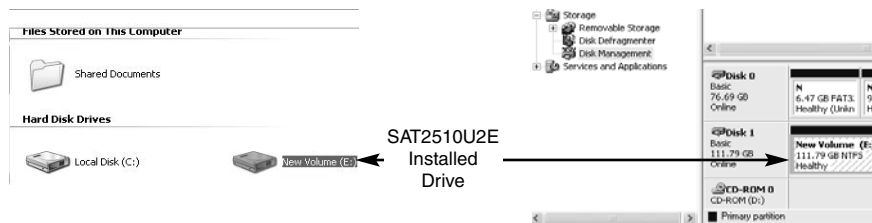
3. Right-click on the Unallocated block, and select **New Partition**.



4. This will launch the **New Partition Wizard**. Please follow the instruction provided by the Wizard, to partition the drive for use.



5. Once the partition has been created, the drive installed within SAT2510U2E will be recognized as a **New Volume** in Disk Management, as well as in My Computer:



Specifications

Operation Temperature	0°C ~ 70°C
Storage Temperature	-20°C ~ 70°C
Operation Humidity	10% ~ 90% RH
Storage Humidity	5% ~ 95% RH
Operating System Compatibility	Windows ME, 2000, XP, Vista, Mac OS X and up
Regulatory Certifications	CE / FCC certified, RoHS compliant

Technical Support

StarTech.com's lifetime technical support is an integral part of our commitment to provide industry-leading solutions. If you ever need help with your product, visit www.startech.com/support and access our comprehensive selection of online tools, documentation, and downloads.

Warranty Information

This product is backed by a one-year warranty. In addition, StarTech.com warrants its products against defects in materials and workmanship for the periods noted, following the initial date of purchase. During this period, the products may be returned for repair, or replacement with equivalent products at our discretion. The warranty covers parts and labor costs only. StarTech.com does not warrant its products from defects or damages arising from misuse, abuse, alteration, or normal wear and tear.

Limitation of Liability

In no event shall the liability of StarTech.com Ltd. and StarTech.com USA LLP (or their officers, directors, employees or agents) for any damages (whether direct or indirect, special, punitive, incidental, consequential, or otherwise), loss of profits, loss of business, or any pecuniary loss, arising out of or related to the use of the product exceed the actual price paid for the product. Some states do not allow the exclusion or limitation of incidental or consequential damages. If such laws apply, the limitations or exclusions contained in this statement may not apply to you.

About StarTech.com

StarTech.com is “The Professionals’ Source for Hard-to-Find Computer Parts”. Since 1985, we have been providing IT professionals with the quality products they need to complete their solutions. We offer an unmatched selection of computer parts, cables, server management solutions and A/V products and serve a worldwide market through our locations in the United States, Canada, the United Kingdom and Taiwan.

Visit **www.startech.com** for complete information about all our products and to access exclusive interactive tools such as the Parts Finder and the KVM Reference Guide. StarTech.com makes it easy to complete almost any IT solution. Find out for yourself why our products lead the industry in performance, support, and value.