

SFPSXMM

Gigabit 850nm Multi-Mode SFP Fiber Optical Transceiver - LC (550m)

Installation Guide

Packaging Contents

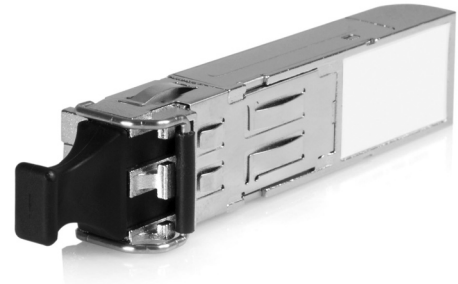
- 1 x SFPSXMM transceiver module
- 1 x Installation Guide

Installation

1. Remove the fiber cover and unhook the retention bar from the SFP module.



2. Insert the SFP module into the SFP receptacle on your networking device.
3. Secure the SFP module in place by locking in the retention bar.
4. Insert the fiber cable into the fiber connector.
5. To remove the SFP module, unhook the retention bar and pull out the module.



Specifications

Interface	Small Form-factor Pluggable MSA
Transmission Standard	1.25Gbps IEEE802.3z 1000BASE-SX
Fiber Connector	Duplex LC
Fiber Type	Multi-Mode
Maximum Distance	550m (50/125um) 300m (62.5/125um)
Hot Pluggable	Yes
Warranty	1 Year

Warranty Information

This product is backed by a one year warranty.

In addition, StarTech.com warrants its products against defects in materials and workmanship for the periods noted, following the initial date of purchase. During this period, the products may be returned for repair, or replacement with equivalent products at our discretion. The warranty covers parts and labor costs only. StarTech.com does not warrant its products from defects or damages arising from misuse, abuse, alteration, or normal wear and tear.

Limitation of Liability

In no event shall the liability of StarTech.com Ltd. and StarTech.com USA LLP (or their officers, directors, employees or agents) for any damages (whether direct or indirect, special, punitive, incidental, consequential, or otherwise), loss of profits, loss of business, or any pecuniary loss, arising out of or related to the use of the product exceed the actual price paid for the product. Some states do not allow the exclusion or limitation of incidental or consequential damages. If such laws apply, the limitations or exclusions contained in this statement may not apply to you.