

1 Port USB PS/2 Server Remote Control IP KVM w/Virtual Media & Serial

StarTech ID: SV1115IPEXT



The SV1115IPEXT 1-Port USB PS/2 IP KVM with Virtual Media and Serial is a comprehensive server remote control solution that enables complete, administrative control of a server over a LAN or the Internet.

[Test drive the new Server Remote Control with a FREE online demo.](#)

Unlike software solutions that work through an operating system, this IP KVM switch delivers BIOS-level control and full interaction with the boot process over an IP network connection, as if you were on-site, with support for security protocols such as SSH, SSL and RADIUS authentication for added protection.

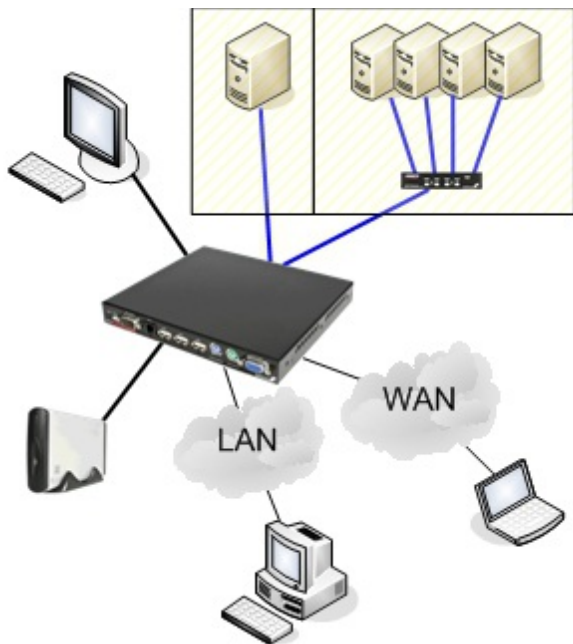
A perfect option for driver updates, patches and remote application or operating system installations, this versatile KVM over IP solution enables file transfers over IP, using Virtual Media.

The IP KVM also offers 3 integrated USB 2.0 ports for connecting local peripherals (keyboard, mouse, USB storage device), which can then be accessed over IP, as well as an integrated RS-232 port that enables you to interact remotely with any device that uses an RS-232 serial terminal (routers, switches, etc.).

The SV1115IPEXT IP KVM switch can be controlled from any device with a web browser or VNC client (TightVNC, RealVNC, etc.), for an open source solution that eliminates the need for proprietary client access software, avoiding costly licensing fees.

Backed by a StarTech.com 2-year warranty and free Lifetime technical support.

Connectivity Model



Applications

- BIOS level remote access to servers at co-location facilities and ISPs
- Enables access to existing KVM switches via TCP/IP for single console remote administration
- Remote access for outsourced server / IT hardware management
- Remote access to mission-critical corporate datacenter servers, increasing uptime
- Create a scalable, streamlined access solution in your Datacenter or Server Farm
- Perfect for manufacturing line computer control, simplifying access to multiple systems through cascading
- Great for PC test/burn-in computer control saving the desk space required for multiple monitors, keyboards and mice and allows remote access

Features

- Full, BIOS level control over IP - as if you were on site
- Allows remote hardware restarts and the ability to power the host computer on and off, if the host computer you are managing supports IPMI (Intelligent Platform Management Interface)
- Platform independent: the IP KVM switch can be managed using any Java-enabled Web browser and connected to virtually any USB or PS/2 host computer
- Obtains an IP address using DHCP or manual static configuration
- Virtual Media allows for remote disk emulation and file transfers
- Compatible with most enterprise-class OSD equipped KVM switches
- Supports 16-bit video for richer picture quality through a web browser or VNC client
- Three integrated USB ports for local peripherals (keyboard, mouse, USB drive, USB CD ROM, etc.)
- Supports SSL encryption, SSH tunneling, and RADIUS authentication
- Flash upgradeable
- Supports direct dial-in when connected to an external modem (modem not included)
- On-Screen Display offers convenient control and configuration options
- Supports industry-standard networking and management protocols (i.e. TCP/IP and SNMP)

Technical Specifications

Warranty	2 Years
Audio	No
KVM Ports	1
PC Interface	USB and PS/2
PC Video Type	VGA
Multi-Monitor	No
Rack-Mountable	Yes
Cables Included	Yes
Daisy-Chain	Yes
Console Interface(s)	1 - DB-9 (9 pin; D-Sub) Male
Console Interface(s)	1 - RJ-11 Female
Console Interface(s)	1 - VGA (15 pin; High Density D-Sub) Female
Console Interface(s)	2 - Mini HDMI (19 pin) Female
Console Interface(s)	3 - USB A (4 pin) Female
Host Connectors	1 - DB-9 (9 pin; D-Sub) Female
Host Connectors	1 - USB B (4 pin) Female
Host Connectors	1 - VGA (15 pin; High Density D-Sub) Male
Host Connectors	2 - PS/2 (6 pin; Mini-DIN) Female
Other Interface(s)	2 - RJ-45 Female
IP Control	Yes
Maximum Data Transfer Rate	Ethernet LAN/WAN ports - 10/100Mbps
Maximum Analog Resolutions	1600 x 1200 @85Hz
Maximum Number of Users	1 active user plus up to 3 viewing
Security Features	128-bit SSL Encryption
Supported Protocols	SSH, HTTP, SNMP, HTTPS, VNC & VNCS
OS Compatibility	Windows 95/ 98/ NT/ 2000/ ME/ XP(32/64bit)/ Server 2003(32/64bit)/ Vista(32/64bit)/

7(32/64bit)/ Server 2008 R2, Mac OS, CPM, Linux, FreeBSD, UNIX and more

Color	Black
Enclosure Type	Steel
Product Length	6.6 in [168 mm]
Product Width	7.4 in [188 mm]
Product Height	0.9 in [22 mm]
Product Weight	24.7 oz [700 g]
LED Indicators	1 - LAN link
LED Indicators	1 - Power
LED Indicators	1 - R-Port
LED Indicators	1 - USB
LED Indicators	1 - Video
LED Indicators	1 - WANLink
Power Adapter Included	Yes
Output Voltage	5 DC
Output Current	3A

Note Adding more than 1 optional PCM815SHNA power switch to the Server Remote Control requires a [RPORT](#) module.

Source code for the unit operating system is available upon request. Please contact us by phone, live chat, or email to make your request.

This offer is valid for three years from the date of purchase and/or for as long as parts or customer support is offered for this product.

Charges for the reasonable cost of copying and/or conveying may apply.

Shipping (Package) Weight	4.2 lb [1.9 kg]
Included in Package	1 - IP KVM Unit
Included in Package	1 - 6ft VGA PS/2 KVM Cable
Included in Package	1 - Pack, Rubber Feet
Included in Package	1 - Power Adapter
Included in Package	1 - Instruction Manual

Certifications, Reports and Compatibility

