

4 User 32 Port Cat5 Matrix IP KVM Switch

StarTech ID: SV3254DX4I

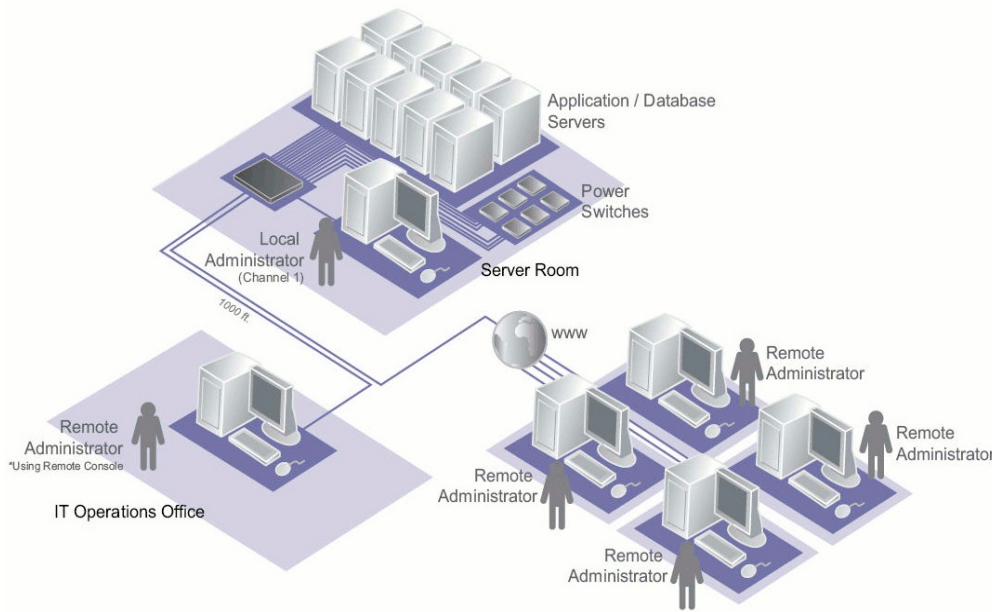


The SV3254DX4I 4-User 32-Port Enterprise class CAT 5 Matrix IP KVM Switch provides multi-user control of connected servers, devices and services connected through a local network infrastructure. Allowing a total of 4 independent user channels at any time, you have the freedom to choose a combination of IP users, local user and on-site remote console user (using a console extender device – SV5CONS not included) to access up to 4 connected systems simultaneously.

The IP KVM switch allows users to reboot the system, access the BIOS, install applications or operating systems, transfer files over virtual media, and have full control over the keyboard and mouse as if they are on site, saving time and resources by providing complete remote control of connected equipment.

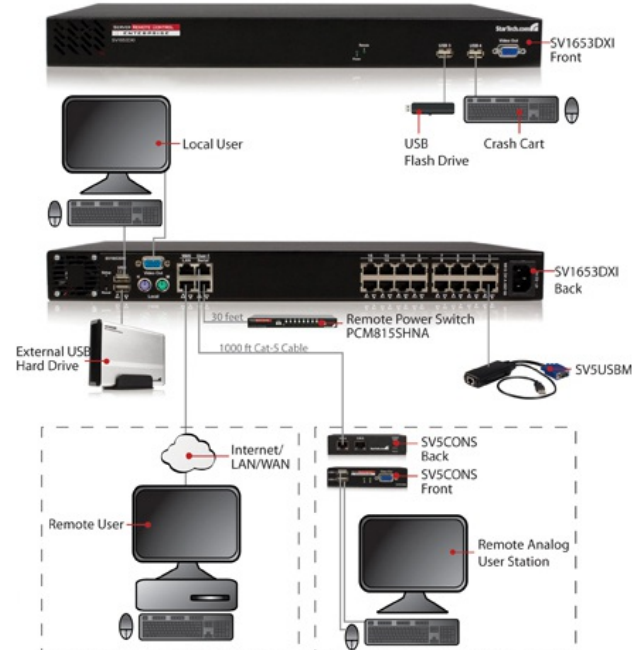
Aside from a dependable and convenient operating platform, the matrix switch also provides features essential for secure and efficient management of mission-critical servers and devices - day in and day out.

How it works:



Connectivity Diagram

Enterprise Series "Matrix CAT-5 Digital KVM Switch"



[Click Here](#) to download and view a comparison matrix between the SV3254DX4I and its competitors

Note: The following interface modules are required for host connectivity

[SV5USBM](#) - USB Server Interface Module for the Enterprise Series IP KVMs

[SV5PS2M](#) - PS/2 Server Interface Module for the Enterprise Series IP KVMs

Applications

- Users can reboot the system, access the BIOS, and have full control over the keyboard and mouse - as if they are on site
- Administer multiple servers for your Co-Location/ISP facility at the BIOS level either onsite or remotely saving time and money
- Create a scalable, streamlined access solution in your Datacenter or Server Farm
- Perfect for manufacturing line computer control, simplifying access to multiple systems
- Great for PC test/burn-in computer control saving the desk space required for multiple monitors, keyboards and mice
- Scale existing infrastructure, and access existing KVM analog switches via TCP/IP
- Remote access for outsourced server / IT hardware management, saving travel time
- Remote access to mission-critical corporate datacenter servers ensuring maximum uptime

Features

- BIOS level control of the attached servers from anywhere over the internet
- 4 connected channels at a time from: 4 IP users, 1 local user, and 1 remote console extender user
- Supports virtual media and file transferring for connected servers (with the use of the USB 2.0 Interface Modules)
- Local hard drive can be connected to the KVM and used as a shared resource among all connected servers without affecting regular network traffic to file servers
- Longest supported distance from the server to the KVM compared to competitors (164 feet)
- Serial control via SSH and Telnet through the IP interface
- Secure access to the web console via user ID and SSL password
- Supports up to 32 user accounts and incorporates SSL encryption of session data, and SSL web communication encryption
- High resolution support for 1600 x 1200 @ 75Hz
- Supports a maximum resolution of 1600 x 1200 at 16 bit via the web interface
- Low Power consumption (as much as 25% lower than competitors)
- Versatile wide range power support, works with anything from 85-260 VAC
- Crash Cart ports on the front of the KVM for quick connections
- Plug and Play compliant hybrid KVM supporting both USB and PS2
- Web interface works with smartphone devices that support VNC or Java, for control while mobile
- Works with PC, Mac, Linux and Sun Systems
- Upgradeable firmware
- Each computer name can be defined via the OSD menu and Web interface
- Obtains an IP address using DHCP or manual configuration
- Made in North America

Technical Specifications

Warranty	2 Years
Audio	No
KVM Ports	32
PC Interface	USB and PS/2
PC Video Type	VGA
Multi-Monitor	No
Rack-Mountable	Yes
Cables Included	No
Daisy-Chain	Yes
Console Interface(s)	1 - RJ-45 Female
Console Interface(s)	2 - PS/2 (6 pin; Mini-DIN) Female
Console Interface(s)	2 - RJ-45 Female
Console Interface(s)	2 - VGA (15 pin; High Density D-Sub) Female
Console Interface(s)	4 - USB A (4 pin) Female
Host Connectors	32 - RJ-45 Female
IP Control	Yes
Maximum Analog Resolutions	Standard(4:3) - 1600x1200 @60Hz (Recommended 1280x1024) Widescreen(16:9) - 1280x960
Maximum Number of Users	1 x Local, 1 x Remote Console, 4 x IP User - Total 4
Port Selection Support	Hotkeys and OSD (On Screen Display)
Security Features	128-bit SSL Encryption
Supported Protocols	SSH, HTTP, SNMP, HTTPS, VNC VNCS, Radius
Color	Black
Enclosure Type	Steel
Product Width	17.3 in [440 mm]
Product Height	1.7 in [44 mm]
Product Depth	12.2 in [310 mm]
Product Weight	77.7 oz [2200 g]
LED Indicators	1 - Link
LED Indicators	1 - Power
Power Adapter Included	Yes

Input Voltage	115 ~ 230 AC
Operating Temperature	0 - 405/12/2012eg;C (32 - 1045/12/2012eg;F)
Storage Temperature	-40 - 655/12/2012eg;C (-40 - 1585/12/2012eg;F)
Humidity	80% RHNC

Note Source code for the unit operating system is available upon request. Please contact us by phone, live chat, or email to make your request.

This offer is valid for three years from the date of purchase and/or for as long as parts or customer support is offered for this product.

Charges for the reasonable cost of copying and/or conveying may apply.

Shipping (Package) 2990
Weight

- Included in Package 1 - 32 Port IP KVM
- Included in Package 1 - Rack Mounting Hardware
- Included in Package 1 - Power Cable
- Included in Package 1 - Manual on Cd

Certifications, Reports and Compatibility

