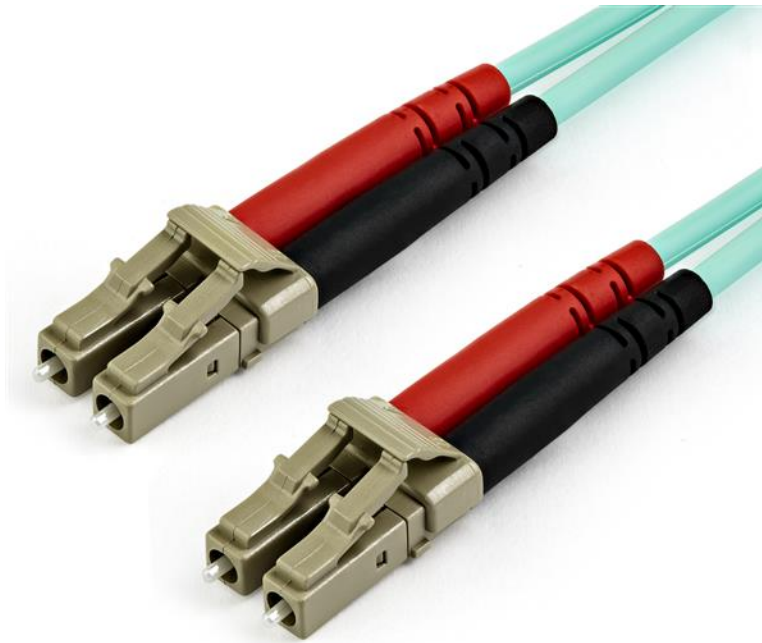


15 m OM4 LC to LC Multimode Duplex Fiber Optic Patch Cable

Product ID: 450FBLCLC15



This LC to LC Multimode Duplex Fiber Optic Patch cable offers reliable connections for 40GBase-SR4, 100GBase-SR10, SFP+ and QSFP+ transceivers in your 40 and 100 Gigabit networks.

Built for Performance

With laser-optimized multimode fiber (LOMMF), the patch cable is ideal for 850 nm and 1350 nm Vertical Cavity Surface Emitting Laser (VCSEL) and LED sources. The high-speed connectivity on the aqua fiber-optic cable provides a high-bandwidth solution for your data centers or high-density applications.

Maximum Compatibility

This fiber-optic patch cord is backward compatible with your existing 50/125 equipment, ensuring a reliable connection with legacy LANs.

High Quality Construction

Housed in a LSZH (Low-Smoke, Zero-Halogen) flame retardant jacket, this fiber-optic cable ensures minimal smoke, toxicity and corrosion when exposed to high sources of heat, or in the event of a fire. It's the best choice for a wide range of environments, including industrial settings, central offices and schools, as well as residential settings where building codes are a consideration.

Each OM4 fiber cable is also individually tested and certified to be within acceptable optical insertion loss limits for guaranteed compatibility and 100% reliability.

450FBLCLC15 is backed by a StarTech.com lifetime warranty and free lifetime technical support.

Certifications, Reports and Compatibility



Applications

- Use in 40/100 Gigabit Ethernet and fiber-channel applications
- High-speed connectivity for high-density applications

Features

- Reliable connection to SFP+ and QSFP+ transceivers in 40 and 100 Gigabit networks
- Provides high bandwidth with laser-optimized multimode fiber (LOMMF)
- Easily connect to your VCSEL and LED sources
- Backward compatible with your existing 50/125 equipment
- Built with a Low-Smoke, Zero-Halogen flame retardant jacket for a safe connection

Hardware	Warranty	Lifetime
	Fiber Size	50/125
	Fire Rating	LSZH Rated (Low Smoke Zero Halogen)
Performance	Cable Rating	10Gbps / 40Gbps / 100Gbps
	Fiber Classification	OM4
	Maximum Data Transfer Rate	100Gbps
	Type	Multi Mode
	Wavelength	850nm
Connector(s)	Connector A	1 - Fiber Optic LC Duplex Male
	Connector B	1 - Fiber Optic LC Duplex Male
Environmental	Humidity	0~90% RH
	Operating Temperature	-20°C to 60°C (-4°F to 140°F)
	Storage Temperature	-20°C to 60°C (-4°F to 140°F)
Physical Characteristics	Cable Length	49.2 ft [15 m]
	Color	Aqua
	Product Height	0 in [0 mm]
	Product Length	49.2 ft [15 m]
	Product Width	0 in [0 mm]
	Weight of Product	6.9 oz [195 g]
Packaging Information	Package Height	1.3 in [32 mm]
	Package Length	7.9 in [20 cm]
	Package Width	8.7 in [22 cm]
	Shipping (Package) Weight	7.2 oz [205 g]
What's in the Box	Included in Package	1 - 15 m Fiber Optic Cable

Product appearance and specifications are subject to change without notice.