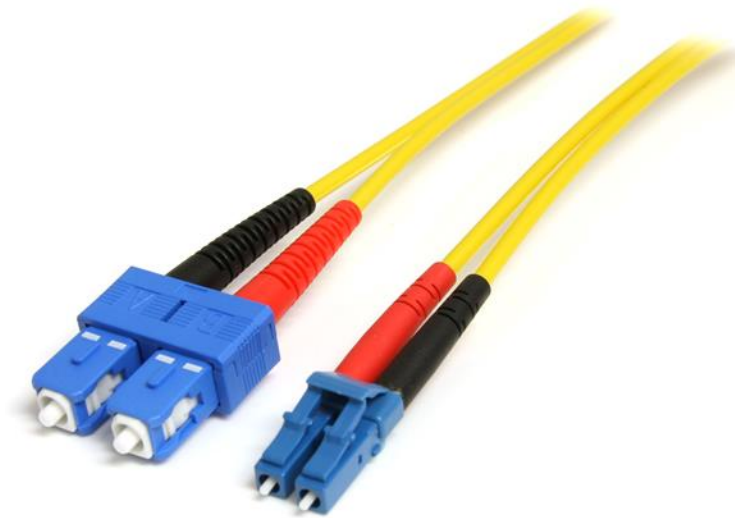


Fiber Optic Cable - Single-Mode Duplex 9/125 - LSZH - LC/SC - 4 m

Product ID: SMFIBLCSC4



The SMFIBLCSC4 4m LC to SC Single-Mode Duplex Fiber Cable features 9/125 micron fiber for high-speed, high bandwidth data transmissions over Gigabit Ethernet and Fiber Channel networks, with support for duplex single-mode applications.

This LC-SC patch cable is housed in a LSZH (Low-Smoke, Zero-Halogen) flame retardant jacket, to ensure minimal smoke, toxicity and corrosion when exposed to high sources of heat, in the event of a fire – an ideal solution for use in industrial settings, central offices and schools, as well as residential settings where building codes are a consideration.

Each Duplex 9/125 (OS1) Single-Mode Fiber Patch Cable is individually tested and certified to be within acceptable optical insertion loss limits for guaranteed compatibility and 100% reliability, and is backed by our lifetime warranty.

Certifications, Reports and Compatibility



Applications

- Use in Gigabit Ethernet and Fiber Channel applications
- Ideal solution for data applications requiring high speed data transmission
- Broadband systems
- Telecommunication/Data communication
- Fiber Connections in Patch Panels, Hubs, Switches, Routers

Features

- 1x LC SM male connector
- 1x SC SM male connector
- OS1 (9/125)
- LSZH (Low-Smoke, Zero-Halogen) cable jacket
- Attenuation loss meets or exceeds industry standards
- Molded connectors

Hardware	Warranty	Lifetime
	Fiber Size	9/125
	Fire Rating	LSZH Rated (Low Smoke Zero Halogen)
Performance	Cable Rating	10Gbps / 40Gbps / 100Gbps
	Fiber Classification	OS1
	Fiber Type	Single Mode
	Maximum Data Transfer Rate	100Gbps
Connector(s)	Connector A	1 - Fiber Optic LC Duplex Male
	Connector B	1 - Fiber Optic SC Duplex Male
Physical Characteristics	Cable Length	13.1 ft [4 m]
	Color	Yellow
	Product Length	13.1 ft [4 m]
	Product Weight	2.2 oz [62 g]
Packaging Information	Package Quantity	1
	Shipping (Package) Weight	2.5 oz [71 g]
What's in the Box	Included in Package	1 - 4m Single Mode Duplex Fiber Patch Cable LC-SC

Product appearance and specifications are subject to change without notice.