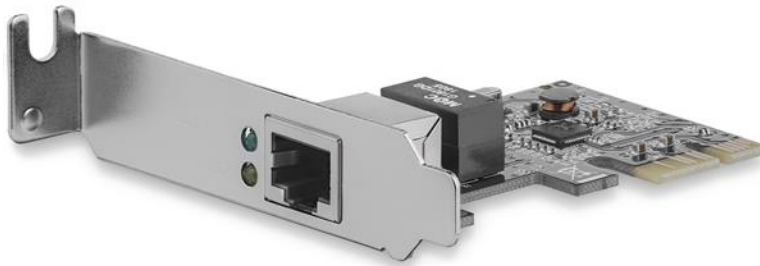


# 1 Port PCI Express PCIe Gigabit NIC Server Adapter Network Card - Low Profile

Product ID: ST1000SPEX2L



The ST1000SPEX2L Low-Profile PCIe Gigabit Network Card adds a 10/100/1000 Mbps compatible RJ45 Ethernet port to a PCI Express-enabled client, server or workstation, providing a convenient addition or replacement networking interface.

Compliant with IEEE 802.3/u/ab standards, and with support for 9K Jumbo Frames, VLAN tagging and Wake on LAN (WOL), this versatile Gigabit NIC/Server Adapter offers effective network performance.

The card comes pre-configured with a low-profile/half-height installation bracket and includes a standard profile bracket for installation in a wide range of computer/server chassis, regardless of form factor.

Backed by a 2-year StarTech.com warranty and free lifetime technical support.

### Certifications, Reports and Compatibility



### Applications

- Upgrade from 10/100 Ethernet capability to Gigabit capability
- Add an Ethernet port to a workstation or server computer, for redundancy or bridging
- Add networking capabilities to an old system with no Ethernet port

### Features

- A single 10/100/1000Mbps compatible RJ45 Ethernet port
- Gigabit detection and Link/Activity LED indicators
- Fully Compliant with IEEE 802.3, IEEE 802.3u, IEEE 802.3x and IEEE 802.3ab standards
- Supports IEEE 802.1Q VLAN tagging, IEEE 802.1P Layer 2 Priority Encoding and IEEE 802.3x Full Duplex Flow Control
- Jumbo frame support
- Full and half duplex support
- Supports Wake-on-LAN function
- Crossover Detection & Auto-Correction (Auto MDI/MDI-X)

<b>Hardware</b>	Warranty	2 Years
	Bus Type	PCI Express
	Card Type	Low Profile (SP bracket incl.)
	Chipset ID	Realtek - RTL8111H
	Industry Standards	IEEE 802.3, IEEE 802.3u, IEEE 802.3x, IEEE 802.3ab
	Interface	RJ45 (Gigabit Ethernet)
	Ports	1
<b>Performance</b>	Auto MDIX	Yes
	Compatible Networks	10/100/1000 Mbps
	Full Duplex Support	Yes
	Jumbo Frame Support	9K max.
	Maximum Data Transfer Rate	1000 Mbps
	Supported Protocols	CSMA/CD
<b>Connector(s)</b>	Connector Type(s)	1 - PCI Express x1
	External Ports	1 - RJ-45
<b>Software</b>	OS Compatibility	Windows® 2000, XP, Vista, 7, 8, 8.1, 10 Windows Server® 2003, 2008 R2, 2012, 2012 R2, 2016 Mac OS X® 10.6 to 10.9 Linux 2.4.x to 4.11.x <i>LTS Versions Only</i>
<b>Special Notes / Requirements</b>	System and Cable Requirements	Available PCI Express expansion card slot
<b>Indicators</b>	LED Indicators	1 - Gigabit Detect (Yellow) 1 - Link/Activity (Green)
<b>Environmental</b>	Humidity	10% ~ 90% RH
	Operating Temperature	0°C to 70°C (32°F to 158°F)
	Storage Temperature	0°C to 100°C (32°F to 212°F)
<b>Physical Characteristics</b>	Product Height	1.9 in [49 mm]
	Product Length	2.8 in [70 mm]
	Product Weight	1 oz [27 g]
	Product Width	0.7 in [18 mm]
<b>Packaging Information</b>	Shipping (Package) Weight	4.4 oz [125 g]
<b>What's in the Box</b>	Included in Package	1 - Gigabit Ethernet PCI Express Card

1 - Standard Profile Bracket

1 - Driver CD

1 - Instruction Manual

---

Product appearance and specifications are subject to change without notice.