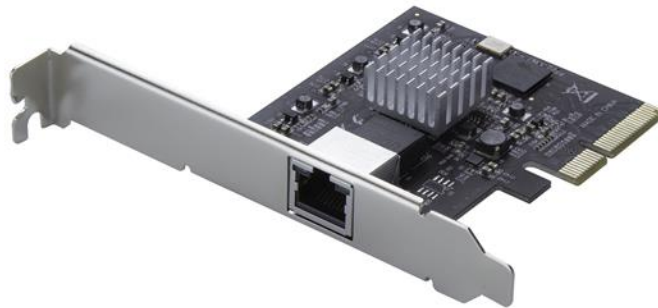


# 1 Port PCIe 4 Speed 5GBASE-T/NBASE T Ethernet Network Card

Product ID: ST5GPEXNB



This 4-speed NBASE-T™ PCIe network card offers an inexpensive network upgrade solution, providing access to your network at multiple speeds up to 5G, using your existing Cat5e copper cabling.

## Cost-effective Multi-Gigabit Ethernet

Fully compliant with 2.5GBASE-T, 5GBASE-T, and NBASE-T (Draft IEEE802.3bz) specifications, the PCIe NIC offers a cost-effective and versatile networking solution. It provides additional bandwidth at multiple speeds, to meet your network needs without the expense of overhauling your existing cable infrastructure.

## **Advanced technology for optimal performance**

The featured NBASE-T technology and multi-gigabit speeds support Cisco® campus switches, including Catalyst 4500E, 3850 and 3560-CX. The Marvell® 88E2010 chipset is optimized for achieving 2.5 and 5G rates over your existing Cat5e copper cable setup without upgrading to the more expensive Cat6A cabling required for 10Gbps speeds.

## **Operating efficiency and flexible use**

The Tehuti Networks™ TN4010 chipset, compliant with IEEE 802.3az, ensures peak operating efficiency with reduced power consumption. The network card also supports 9K jumbo frames, 802.1q VLAN tagging and is backward compatible with 1000BASE-T. For additional versatility, the controller card is equipped with a standard-profile bracket and includes a low-profile bracket for installation in small form-factor computers.

The ST5GPEXNB is backed by a StarTech.com 2-year warranty.

### Certifications, Reports and Compatibility



### Applications

- Ideal for enterprise, gaming and home networks that require rates beyond 1Gbps using existing cabling
- Designed for low-power, low-cost single port network applications that require more than Gigabit speeds
- Great for supporting multi-gigabit technology such as Cisco campus switches, including Catalyst 4500E, 3850 and 3560-CX
- Ideal for administrative and academic buildings such as university libraries, student centers and residence halls

### Features

- Cost-effective and versatile Ethernet connectivity supporting four network speeds: 5G, 2.5G, 1G and 100Mbps
- Achieve up to 2.5Gbps and 5Gbps speeds on your existing Cat5e cabling infrastructure
- Compliant with 5GBase-T and NBase-T (Draft IEEE802.3bz) specifications
- Windows®, macOS, Linux® support
- 9K jumbo frame support

<b>Hardware</b>	Warranty	2 Years
	Bus Type	PCI Express
	Card Type	Standard Profile (LP bracket incl.)
	Chipset ID	Tehuti - TN4010 Marvell - 88E2010P
	Industry Standards	IEEE 802.3bz (NBase-T) IEEE 802.3ab (1000Base-T) IEEE 802.3u (100BASE-TX) IEEE 802.3ad (Link Aggregation) IEEE 802.1q (VLAN tagging) PCI Express Rev 2.0
	Interface	RJ45 (Gigabit Ethernet)
	Ports	1
<b>Performance</b>	Auto MDIX	Yes
	Auto-Negotiation	Yes
	Compatible Networks	5G/2.5G/1G/100 Mbps
	Full Duplex Support	Yes
	Jumbo Frame Support	9K max.
	Maximum Data Transfer Rate	5 Gbps
	Promiscuous Mode	Yes
	PXE	No
	Supported Protocols	IEEE 802.3ad (Link aggregation) IEEE 802.1q (VLAN tagging)
<b>Connector(s)</b>	Connector Type(s)	1 - PCI Express x4 Male
	External Ports	1 - RJ-45 Female
<b>Software</b>	OS Compatibility	Windows® 7, 8, 10 Windows® Server 2008 R2 Windows® Server 2012 R2 Windows® Server 2016 Mac OS® 10.12 to 10.14 Linux 2.6.32 - 4.x LTS versions only
<b>Indicators</b>	LED Indicators	1 - Link speed  1 - Link/Activity
<b>Environmental</b>	Humidity	10% ~ 90% RH
	Operating Temperature	0°C to 70°C (32°F to 158°F)
	Storage Temperature	-40°C to 85°C (-40°F to 185°F)

<b>Physical Characteristics</b>	Color	Black
	Product Height	0.8 in [20 mm]
	Product Length	3.1 in [80 mm]
	Product Weight	1.6 oz [46 g]
	Product Width	4.7 in [120 mm]
<b>Packaging Information</b>	Shipping (Package) Weight	1.9 oz [55 g]
<b>What's in the Box</b>	Included in Package	1 - network card
		1 - low-profile mounting bracket
		1 - driver CD
		1 - instruction manual

Product appearance and specifications are subject to change without notice.